

TCP-1 β Monoclonal Antibody

Catalog No :	YM0613
Reactivity :	Human;Mouse;Rat;Monkey
Applications :	WB;IF;FCM;ELISA
Target :	TCP-1 β
Gene Name :	CCT2
Protein Name :	T-complex protein 1 subunit beta
Human Gene Id :	10576
Human Swiss Prot No :	P78371
Mouse Gene Id :	12461
Mouse Swiss Prot No :	P80314
Rat Gene Id :	299809
Rat Swiss Prot No :	Q5XIM9
Immunogen :	Purified recombinant fragment of human TCP-1 β expressed in E. Coli.
Specificity :	TCP-1 β Monoclonal Antibody detects endogenous levels of TCP-1 β protein.
Formulation :	Liquid in PBS containing 50% glycerol, 0.5% BSA and 0.02% sodium azide.
Source :	Monoclonal, Mouse
Dilution :	WB 1:500 - 1:2000. IF 1:200 - 1:1000. Flow cytometry: 1:200 - 1:400. ELISA: 1:10000. Not yet tested in other applications.
Purification :	Affinity purification

Storage Stability : -15°C to -25°C/1 year(Do not lower than -25°C)

Molecularweight : 57kD

P References : 1. J Biol Chem. 2009 May 29;284(22):14939-48.
2. Mol Cell Proteomics. 2009 Jan;8(1):157-71.

Background : The protein encoded by this gene is a molecular chaperone that is a member of the chaperonin containing TCP1 complex (CCT), also known as the TCP1 ring complex (TRiC). This complex consists of two identical stacked rings, each containing eight different proteins. Unfolded polypeptides enter the central cavity of the complex and are folded in an ATP-dependent manner. The complex folds various proteins, including actin and tubulin. Two transcript variants encoding different isoforms have been found for this gene. [provided by RefSeq, Nov 2010],

Function : function:Molecular chaperone; assist the folding of proteins upon ATP hydrolysis. Known to play a role, in vitro, in the folding of actin and tubulin.,similarity:Belongs to the TCP-1 chaperonin family.,subunit:Heterooligomeric complex of about 850 to 900 kDa that forms two stacked rings, 12 to 16 nm in diameter. Interacts with PACRG.,

Subcellular Location : Cytoplasm .

Expression : B-cell lymphoma,Brain,Cajal-Retzius cell,Fetal brain cortex,Liver,P

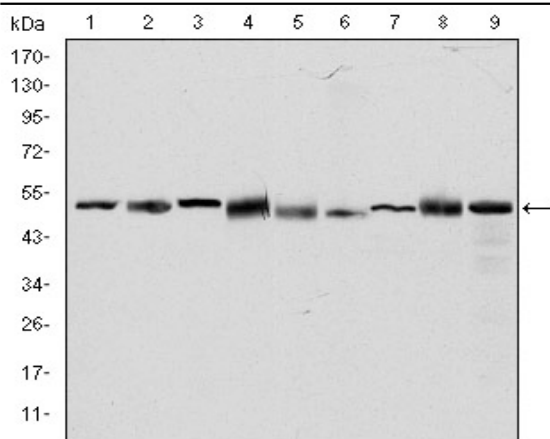
Sort : 17006

No4 : 1

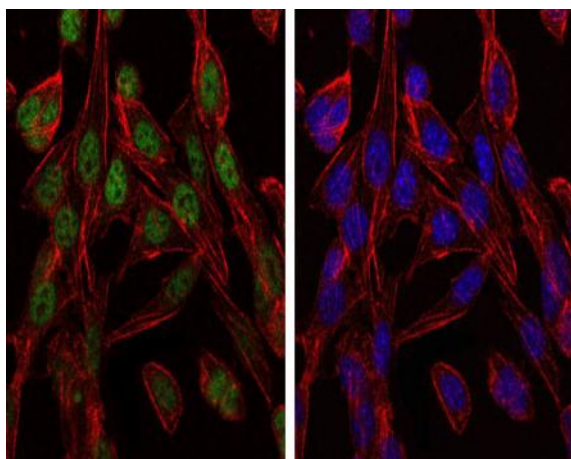
Host : Mouse

Modifications : Unmodified

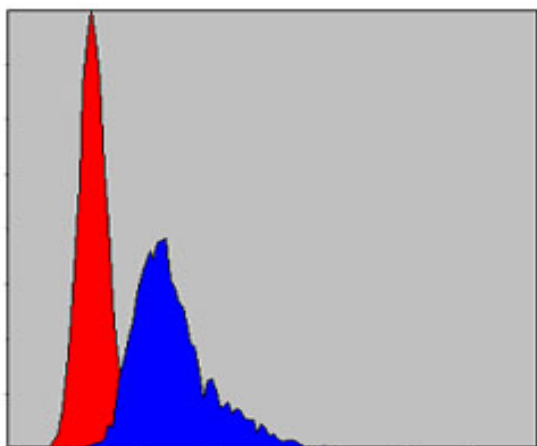
Products Images



Western Blot analysis using TCP-1 β Monoclonal Antibody against HeLa (1), MCF-7 (2), Jurkat (3), T47D (4), K562 (5), A431 (6), NIH/3T3 (7), PC-12 (8) and Cos7 (9) cell lysate.



Immunofluorescence analysis of 3T3-L1 cells using TCP-1 β Monoclonal Antibody (green). Blue: DRAQ5 fluorescent DNA dye. Red: Actin filaments have been labeled with Alexa Fluor-555 phalloidin.



Flow cytometric analysis of NIH/3T3 cells using TCP-1 β Monoclonal Antibody (blue) and negative control (red).

