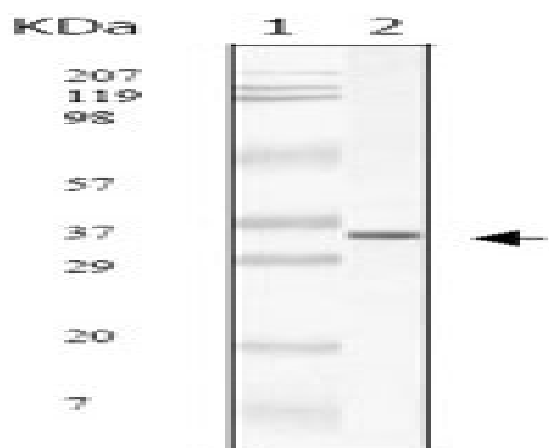


SARS-M Monoclonal Antibody

Catalog No :	YM0576
Reactivity :	Human virus
Applications :	WB;ELISA
Target :	SARS-M
Immunogen :	Purified recombinant fragment of SARS-M protein expressed in E. Coli.
Specificity :	SARS-M Monoclonal Antibody detects SARS-M protein.
Formulation :	Subclonal supernatant.
Source :	Monoclonal, Mouse
Dilution :	WB 1:500 - 1:2000. ELISA: 1:10000. Not yet tested in other applications.
Purification :	Affinity purification
Concentration :	1 mg/ml
Storage Stability :	-15°C to -25°C/1 year(Do not lower than -25°C)
P References :	1. Fournel S, Cell Immunol 1993 Aug; 150(1):194-204. 2. J. Virol., Sep 1999; 73: 7441 - 7452.
Sort :	14776
No4 :	1
Host :	Mouse
Modifications :	Unmodified

Products Images



Western Blot analysis using SARS-M Monoclonal Antibody against SARS-mpm recombinant protein.