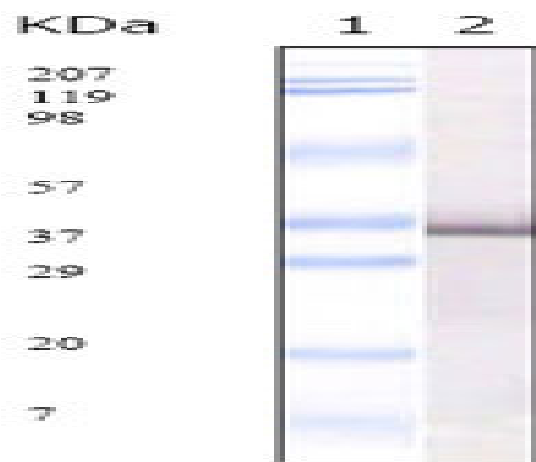


**SARS-E2 Monoclonal Antibody**

<b>Catalog No :</b>	YM0575
<b>Reactivity :</b>	Human virus
<b>Applications :</b>	WB;ELISA
<b>Target :</b>	SARS-E2
<b>Immunogen :</b>	Purified recombinant fragment of SARS-E2 glycoprotein precursor expressed in E. Coli.
<b>Specificity :</b>	SARS-E2 Monoclonal Antibody detects SARS-E2 protein.
<b>Formulation :</b>	Subclonal supernatant.
<b>Source :</b>	Monoclonal, Mouse
<b>Dilution :</b>	WB 1:500 - 1:2000. ELISA: 1:10000. Not yet tested in other applications.
<b>Purification :</b>	Affinity purification
<b>Concentration :</b>	1 mg/ml
<b>Storage Stability :</b>	-15°C to -25°C/1 year(Do not lower than -25°C)
<b>P References :</b>	1. Fournel S, Cell Immunol 1993 Aug; 150(1):194-204. 2. Marcinkiewicz J Przegl Lek 1998;55(11):611-3.
<b>Sort :</b>	14775
<b>No4 :</b>	1
<b>Host :</b>	Mouse
<b>Modifications :</b>	Unmodified

## Products Images



Western Blot analysis using SARS-E2 Monoclonal Antibody against SARS-E2GP3 recombinant protein.