

Rab 10 Monoclonal Antibody

| | |
|------------------------------|---|
| Catalog No : | YM0544 |
| Reactivity : | Human;Mouse |
| Applications : | WB;IF;ELISA |
| Target : | Rab 10 |
| Fields : | >>Endocytosis;>>AMPK signaling pathway |
| Gene Name : | RAB10 |
| Protein Name : | Ras-related protein Rab-10 |
| Human Gene Id : | 10890 |
| Human Swiss Prot No : | P61026 |
| Mouse Gene Id : | 19325 |
| Mouse Swiss Prot No : | P61027 |
| Immunogen : | Purified recombinant fragment of human Rab 10 expressed in E. Coli. |
| Specificity : | Rab 10 Monoclonal Antibody detects endogenous levels of Rab 10 protein. |
| Formulation : | Liquid in PBS containing 50% glycerol, 0.5% BSA and 0.02% sodium azide. |
| Source : | Monoclonal, Mouse |
| Dilution : | WB 1:500 - 1:2000. IF 1:200 - 1:1000. ELISA: 1:10000. Not yet tested in other applications. |
| Purification : | Affinity purification |
| Storage Stability : | -15°C to -25°C/1 year(Do not lower than -25°C) |

Molecularweight : 23kD

P References :

1. Proc Natl Acad Sci U S A. 1993 Jul 15;90(14):6508-12.
2. J Biol Chem. 2003 Apr 25;278(17):15373-80.
3. Mol Med. 2010 Jul-Aug;16(7-8):247-53.

Background : RAB10 belongs to the RAS (see HRAS; MIM 190020) superfamily of small GTPases. RAB proteins localize to exocytic and endocytic compartments and regulate intracellular vesicle trafficking (Bao et al., 1998 [PubMed 9918381]).[supplied by OMIM, Mar 2009],

Function : function:May be involved in vesicular trafficking and neurotransmitter release.,similarity:Belongs to the small GTPase superfamily. Rab family.,

Subcellular Location : Cytoplasmic vesicle membrane ; Lipid-anchor ; Cytoplasmic side . Golgi apparatus membrane . Golgi apparatus, trans-Golgi network membrane . Endosome membrane . Recycling endosome membrane . Cytoplasmic vesicle, phagosome membrane . Cytoplasm, cytoskeleton, cilium basal body . Endoplasmic reticulum membrane . Cytoplasm, perinuclear region . Associates with SLC2A4/GLUT4 storage vesicles (PubMed:22908308). Localizes to the base of the cilium when phosphorylated by LRRK2 on Thr-73 (PubMed:20576682, PubMed:30398148). Transiently associates with phagosomes (By similarity). Localizes to the endoplasmic reticulum at domains of new tubule growth (PubMed:23263280). .

Expression : Expressed in the hippocampus (PubMed:29562525). Expressed in neutrophils (at protein level) (PubMed:29127255). Expressed in the testis (at protein level) (PubMed:28067790).

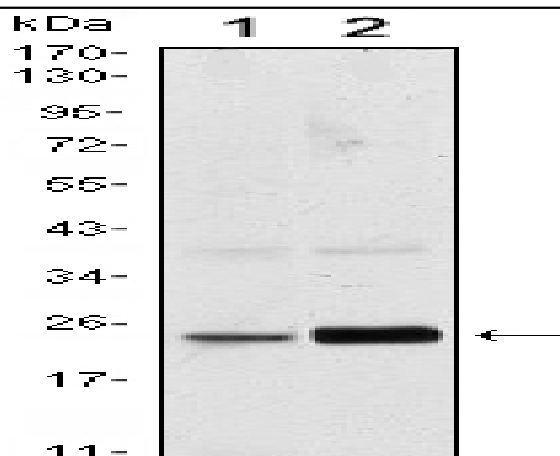
Sort : 13209

No4 : 1

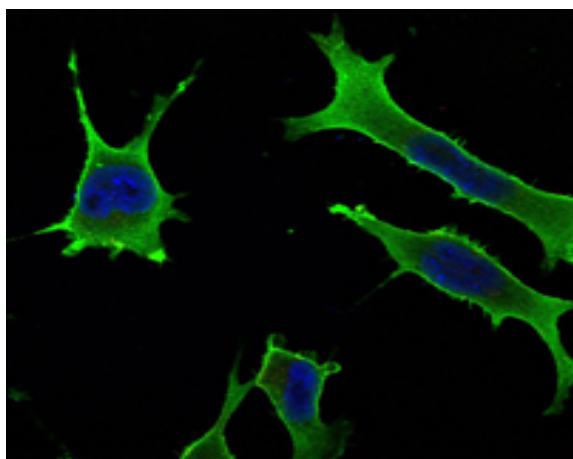
Host : Mouse

Modifications : Unmodified

Products Images



Western Blot analysis using Rab 10 Monoclonal Antibody against HeLa (1) and NIH/3T3 (2) cell lysate.



Immunofluorescence analysis of LOVO cells using Rab 10 Monoclonal Antibody (green). Blue: DRAQ5 fluorescent DNA dye.