

PBEF Monoclonal Antibody

Catalog No :	YM0510
Reactivity :	Human
Applications :	WB;ELISA
Target :	PBEF
Fields :	>>Nicotinate and nicotinamide metabolism;>>Metabolic pathways;>>NOD-like receptor signaling pathway
Gene Name :	NAMPT
Protein Name :	Nicotinamide phosphoribosyltransferase
Human Gene Id :	10135
Human Swiss Prot No :	P43490
Mouse Swiss Prot No :	Q99KQ4
Immunogen :	Purified recombinant fragment of PBEF expressed in E. Coli.
Specificity :	PBEF Monoclonal Antibody detects endogenous levels of PBEF protein.
Formulation :	Liquid in PBS containing 50% glycerol, 0.5% BSA and 0.02% sodium azide.
Source :	Monoclonal, Mouse
Dilution :	WB 1:500 - 1:2000. ELISA: 1:10000. Not yet tested in other applications.
Purification :	Affinity purification
Storage Stability :	-15°C to -25°C/1 year(Do not lower than -25°C)
Molecularweight :	56kD

Cell Pathway : Nicotinate and nicotinamide metabolism;

P References : 1.Jin S et.al J Biol Chem. 2005 Jul 1;280(26):24698-705.
2.Antignani A,et.al Biochemistry. 2005 Mar 15;44(10):4074-82.

Background : This gene encodes a protein that catalyzes the condensation of nicotinamide with 5-phosphoribosyl-1-pyrophosphate to yield nicotinamide mononucleotide, one step in the biosynthesis of nicotinamide adenine dinucleotide. The protein belongs to the nicotinic acid phosphoribosyltransferase (NAPRTase) family and is thought to be involved in many important biological processes, including metabolism, stress response and aging. This gene has a pseudogene on chromosome 10. [provided by RefSeq, Feb 2011],

Function : catalytic activity:Nicotinamide D-ribonucleotide + diphosphate = nicotinamide + 5-phospho-alpha-D-ribose 1-diphosphate.,caution:Was originally (PubMed:8289818) thought to be a cytokine which acts on early B-lineage precursor cells, by enhancing the effect of IL-7 and SCF on pre-B-cell colony formation.,function:Catalyzes the condensation of nicotinamide with 5-phosphoribosyl-1-pyrophosphate to yield nicotinamide mononucleotide, an intermediate in the biosynthesis of NAD. It is the rate limiting component in the mammalian NAD biosynthesis pathway.,pathway:Cofactor biosynthesis; NAD(+) biosynthesis; nicotinamide ribonucleotide from 5-phospho-alpha-D-ribose 1-diphosphate and nicotinamide: step 1/1.,similarity:Belongs to the NAPRTase family.,tissue specificity:Expressed in large amounts in bone marrow, liver tissue, and muscle. Also present in heart, placenta, lung, and kidney tissues.,

Subcellular Location : Nucleus . Cytoplasm . Secreted . Under non-inflammatory conditions, visfatin predominantly exhibits a granular pattern within the nucleus. Secreted by endothelial cells upon IL-1beta stimulation. Abundantly secreted in milk, reaching 100-fold higher concentrations compared to maternal serum. .

Expression : Expressed in large amounts in bone marrow, liver tissue, and muscle. Also present in heart, placenta, lung, and kidney tissues.

Tag : hot

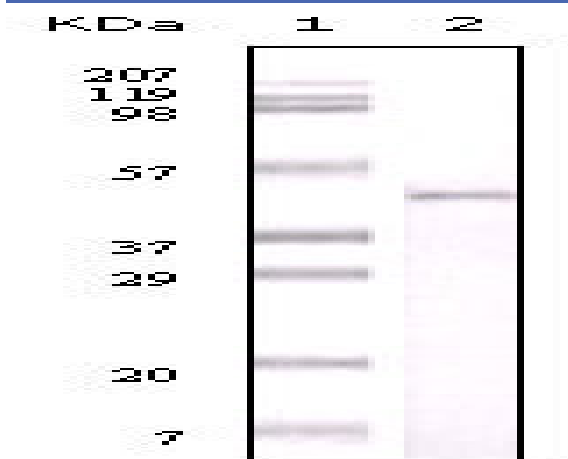
Sort : 11668

No4 : 1

Host : Mouse

Modifications : Unmodified

Products Images



Western Blot analysis using PBEF Monoclonal Antibody against truncated PBEF recombinant protein.