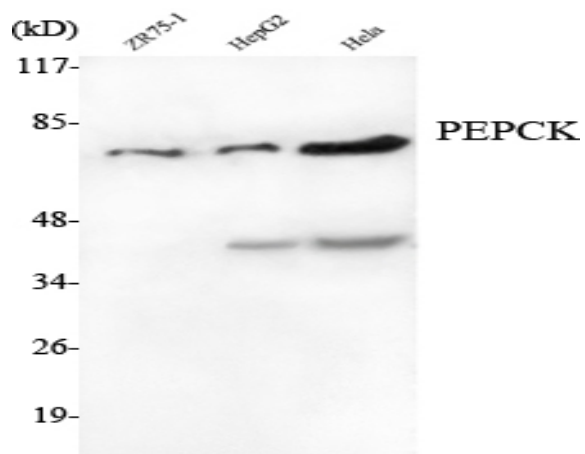


PEPCK Monoclonal Antibody

Catalog No :	YM1074
Reactivity :	Human;Mouse;Rat;Bovine;Dog;Pig
Applications :	WB
Target :	PEPCK
Fields :	>>Glycolysis / Gluconeogenesis;>>Citrate cycle (TCA cycle);>>Pyruvate metabolism;>>Metabolic pathways;>>PPAR signaling pathway;>>FoxO signaling pathway;>>PI3K-Akt signaling pathway;>>AMPK signaling pathway;>>Insulin signaling pathway;>>Adipocytokine signaling pathway;>>Glucagon signaling pathway;>>Insulin resistance;>>Proximal tubule bicarbonate reclamation
Gene Name :	PCK2
Protein Name :	Phosphoenolpyruvate carboxykinase [GTP] mitochondrial
Human Gene Id :	5106
Human Swiss Prot No :	Q16822
Mouse Gene Id :	74551
Mouse Swiss Prot No :	Q8BH04
Immunogen :	Purified recombinant human PEPCK (C-terminus) protein fragments expressed in E.coli.
Specificity :	PEPCK Monoclonal Antibody detects endogenous levels of PEPCK protein.
Formulation :	Liquid in PBS containing 50% glycerol, 0.5% BSA and 0.02% sodium azide.
Source :	Monoclonal, Mouse
Dilution :	WB 1:1000 - 1:2000. Not yet tested in other applications.
Purification :	Affinity purification

Concentration :	1 mg/ml
Storage Stability :	-15°C to -25°C/1 year(Do not lower than -25°C)
Molecularweight :	71kD
Cell Pathway :	Glycolysis / Gluconeogenesis;Citrate cycle (TCA cycle);Pyruvate metabolism;PPAR;Insulin_Receptor;Adipocytokine;
Background :	This gene encodes a mitochondrial enzyme that catalyzes the conversion of oxaloacetate to phosphoenolpyruvate in the presence of guanosine triphosphate (GTP). A cytosolic form of this protein is encoded by a different gene and is the key enzyme of gluconeogenesis in the liver. Alternatively spliced transcript variants have been described. [provided by RefSeq, Apr 2014],
Function :	catalytic activity:GTP + oxaloacetate = GDP + phosphoenolpyruvate + CO(2).,cofactor:Binds 1 manganese ion per subunit.,cofactor:Manganese.,disease:Defects in PCK2 are the cause of mitochondrial phosphoenolpyruvate carboxykinase deficiency (mitochondrial PEPCK deficiency) [MIM:261650]. PEPCK deficiency is a metabolic disorder resulting from impaired gluconeogenesis. It is a rare disease with less than 10 cases reported in the literature. Clinical characteristics include hypotonia, hepatomegaly, failure to thrive, lactic acidosis and hypoglycaemia. Autopsy reveals fatty infiltration of both the liver and kidneys. The disorder is transmitted as an autosomal recessive trait.,function:Catalyzes the conversion of oxaloacetate (OAA) to phosphoenolpyruvate (PEP), the rate-limiting step in the metabolic pathway that produces glucose from lactate and other precursors derived from the citric acid
Subcellular Location :	Mitochondrion.
Expression :	Liver,Neuroblastoma,Placenta,
Tag :	hot
Sort :	11821
No4 :	1
Host :	Mouse
Modifications :	Unmodified

Products Images



Western Blot analysis using PEPCK Monoclonal Antibody against ZR75-1, HepG2, HeLa cell lysate.