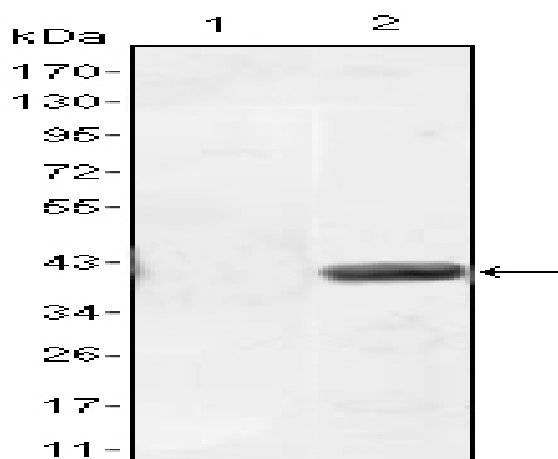


## Matrilin-1 Monoclonal Antibody

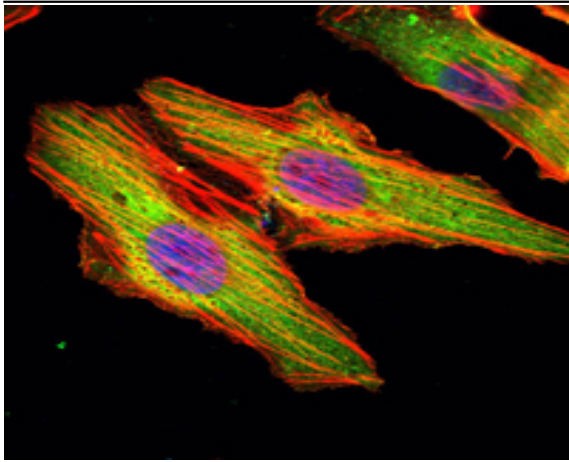
<b>Catalog No :</b>	YM0428
<b>Reactivity :</b>	Human
<b>Applications :</b>	WB;IF;ELISA
<b>Target :</b>	Matrilin-1
<b>Gene Name :</b>	MATN1
<b>Protein Name :</b>	Cartilage matrix protein
<b>Human Gene Id :</b>	4146
<b>Human Swiss Prot No :</b>	P21941
<b>Mouse Swiss Prot No :</b>	P51942
<b>Immunogen :</b>	Purified recombinant fragment of human Matrilin-1 expressed in E. Coli.
<b>Specificity :</b>	Matrilin-1 Monoclonal Antibody detects endogenous levels of Matrilin-1 protein.
<b>Formulation :</b>	Liquid in PBS containing 50% glycerol, 0.5% BSA and 0.02% sodium azide.
<b>Source :</b>	Monoclonal, Mouse
<b>Dilution :</b>	WB 1:500 - 1:2000. IF 1:200 - 1:1000. ELISA: 1:10000. Not yet tested in other applications.
<b>Purification :</b>	Affinity purification
<b>Storage Stability :</b>	-15°C to -25°C/1 year(Do not lower than -25°C)
<b>Molecularweight :</b>	54kD
<b>P References :</b>	<ol style="list-style-type: none"><li>1. Biochem J. 1993 Jul 15;293 ( Pt 2):481-6.</li><li>2. Am J Hum Genet. 1997 Mar;60(3):540-6.</li><li>3. Am J Hum Genet. 2000 Feb;66(2):347-55.</li></ol>

<b>Background :</b>	This gene encodes a member of von Willebrand factor A domain containing protein family. This family of proteins are thought to be involved in the formation of filamentous networks in the extracellular matrices of various tissues. Mutations of this gene have been associated with variety of inherited chondrodysplasias. [provided by RefSeq, Jul 2008],
<b>Function :</b>	function:Cartilage matrix protein is a major component of the extracellular matrix of non-articular cartilage. It binds to collagen.,similarity:Contains 1 EGF-like domain.,similarity:Contains 2 VWFA domains.,subunit:Homotrimer.,
<b>Subcellular Location :</b>	Secreted, extracellular space, extracellular matrix.
<b>Expression :</b>	Muscle,Trachea,
<b>Sort :</b>	9419
<b>No4 :</b>	1
<b>Host :</b>	Mouse
<b>Modifications :</b>	Unmodified

## Products Images



Western Blot analysis using Matrilin-1 Monoclonal Antibody against HEK293 (1) and MATN1-hlgGfc transfected HEK293 (2) cell lysate.



Immunofluorescence analysis of HeLa cells using Matrilin-1 Monoclonal Antibody (green). Blue: DRAQ5 fluorescent DNA dye. Red: Actin filaments have been labeled with Alexa Fluor-555 phalloidin.