

## Mammaglobin A Monoclonal Antibody

<b>Catalog No :</b>	YM0427
<b>Reactivity :</b>	Human
<b>Applications :</b>	WB;IHC;IF;FCM;ELISA
<b>Target :</b>	Mammaglobin
<b>Gene Name :</b>	SCGB2A2
<b>Protein Name :</b>	Mammaglobin-A
<b>Human Gene Id :</b>	4250
<b>Human Swiss Prot No :</b>	Q13296
<b>Immunogen :</b>	Purified recombinant fragment of human Mammaglobin A expressed in E. Coli.
<b>Specificity :</b>	Mammaglobin A Monoclonal Antibody detects endogenous levels of Mammaglobin A protein.
<b>Formulation :</b>	Liquid in PBS containing 50% glycerol, 0.5% BSA and 0.02% sodium azide.
<b>Source :</b>	Monoclonal, Mouse
<b>Dilution :</b>	WB 1:500 - 1:2000. IHC 1:200 - 1:1000. IF 1:200 - 1:1000. Flow cytometry: 1:200 - 1:400. ELISA: 1:10000. Not yet tested in other applications.
<b>Purification :</b>	Affinity purification
<b>Storage Stability :</b>	-15°C to -25°C/1 year(Do not lower than -25°C)
<b>Molecularweight :</b>	10kD
<b>P References :</b>	1. Ann Oncol. 2006 Jun;17 Suppl 7:vii41-5. 2. Mod Pathol. 2007 Feb;20(2):208-14.
<b>Background :</b>	similarity:Belongs to the secretoglobin family. Lipophilin subfamily.,tissue

specificity:Mammary gland specific. Over-expressed in breast cancer.,

**Function :**

similarity:Belongs to the secretoglobin family. Lipophilin subfamily.,tissue specificity:Mammary gland specific. Over-expressed in breast cancer.,

**Subcellular Location :**

Secreted .

**Expression :**

Mammary gland specific. Over-expressed in breast cancer.

**Sort :**

9351

**No4 :**

1

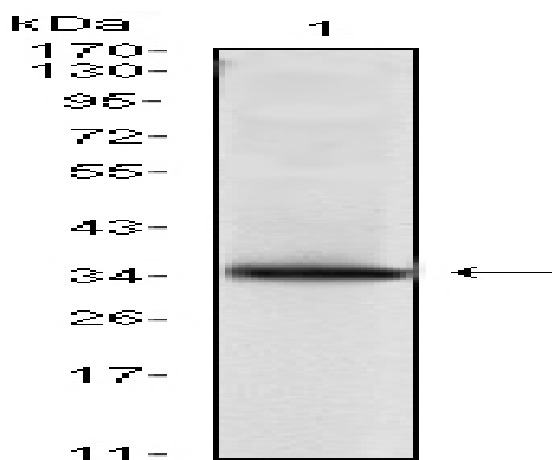
**Host :**

Mouse

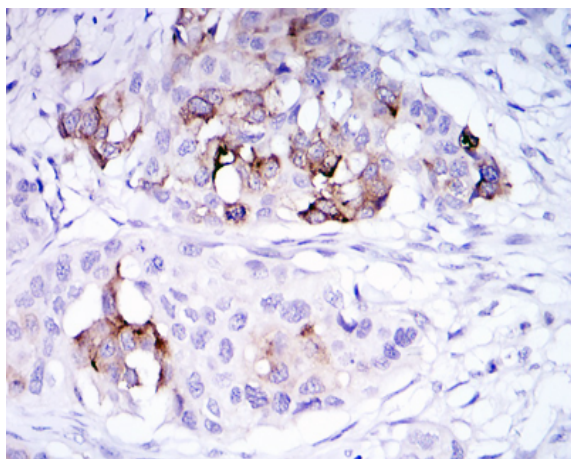
**Modifications :**

Unmodified

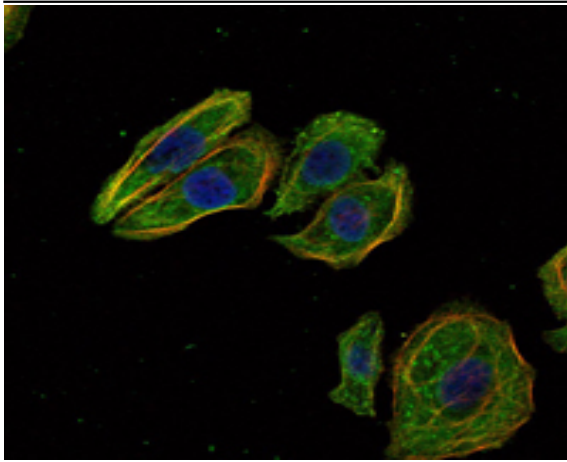
## Products Images



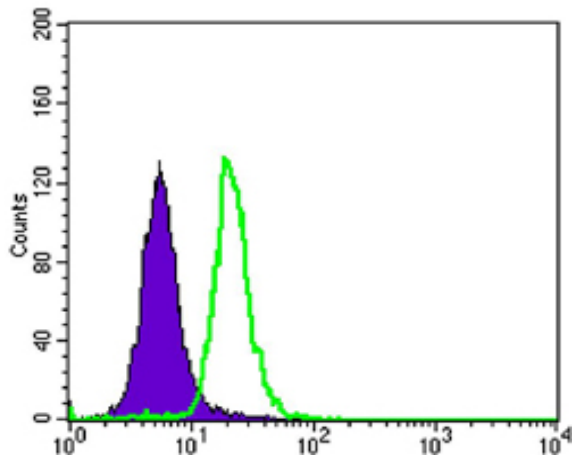
Western Blot analysis using Mammaglobin A Monoclonal Antibody against Mammaglobin A recombinant protein (1).



Immunohistochemistry analysis of paraffin-embedded mammary cancer tissues with DAB staining using Mammaglobin A Monoclonal Antibody.



Immunofluorescence analysis of HeLa cells using Mammaglobin A Monoclonal Antibody (green). Blue: DRAQ5 fluorescent DNA dye. Red: Actin filaments have been labeled with Alexa Fluor-555 phalloidin.



Flow cytometric analysis of SK-BR-3 cells using Mammaglobin A Monoclonal Antibody (green) and negative control (purple).