

Lipocalin-1 Monoclonal Antibody

Catalog No :	YM0417
Reactivity :	Human
Applications :	WB;IHC;IF;ELISA
Target :	Lipocalin-1
Gene Name :	LCN1
Protein Name :	Lipocalin-1
Human Gene Id :	3933
Human Swiss Prot No :	P31025
Immunogen :	Purified recombinant fragment of Lipocalin-1 expressed in E. Coli.
Specificity :	Lipocalin-1 Monoclonal Antibody detects endogenous levels of Lipocalin-1 protein.
Formulation :	Liquid in PBS containing 50% glycerol, 0.5% BSA and 0.02% sodium azide.
Source :	Monoclonal, Mouse
Dilution :	WB 1:500 - 1:2000. IHC 1:200 - 1:1000. IF 1:200 - 1:1000. ELISA: 1:10000. Not yet tested in other applications.
Purification :	Affinity purification
Storage Stability :	-15°C to -25°C/1 year(Do not lower than -25°C)
Molecularweight :	19kD
P References :	1. Adv Exp Med Biol. 2002;506(Pt A):555-65. 2. J Autoimmun. 2005 Nov;25(3):229-34.
Background :	This gene encodes a member of the lipocalin family of small secretory proteins.

Lipocalins are extracellular transport proteins that bind to a variety of hydrophobic ligands. The encoded protein is the primary lipid binding protein in tears and is overproduced in response to multiple stimuli including infection and stress. The encoded protein may be a marker for chromosome aneuploidy as well as an autoantigen in Sjogren's syndrome. Alternatively spliced transcript variants encoding multiple isoforms have been observed for this gene, and two pseudogenes of this gene are also located on the long arm of chromosome 9. [provided by RefSeq, Nov 2011],

Function :

caution:Could be the product of a pseudogene.,function:Could play a role in taste reception. Could be necessary for the concentration and delivery of sapid molecules in the gustatory system. Can bind various ligands, with chemical structures ranging from lipids and retinoids to the macrocyclic antibiotic rifampicin and even to microbial siderophores. Exhibits an extremely wide ligand pocket.,function:May bind a variety of ligands including lipids.,similarity:Belongs to the calycin superfamily. Lipocalin family.,subunit:Homodimer (By similarity). Binds to LMBR1L which may mediate its endocytosis.,tissue specificity:Mainly expressed in lachrymal and salivary glands. Also expressed in the prostate.,

Subcellular Location :

Secreted.

Expression :

Mainly expressed in lachrymal and salivary glands. Also expressed in the prostate.

Sort :

9197

No4 :

1

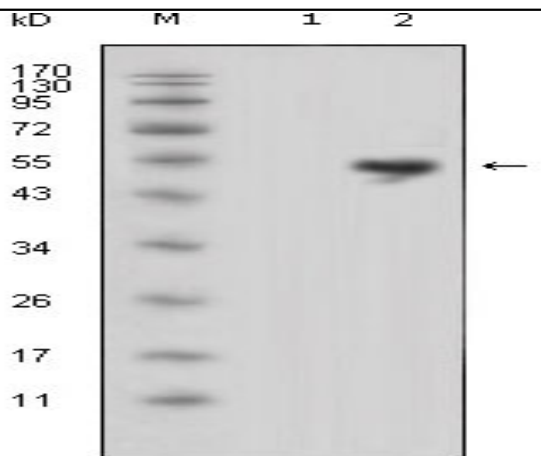
Host :

Mouse

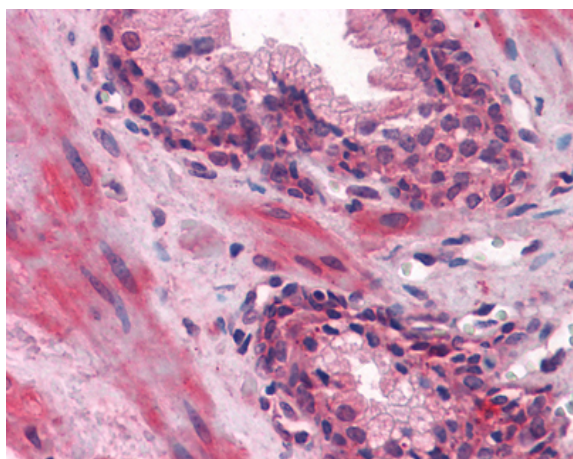
Modifications :

Unmodified

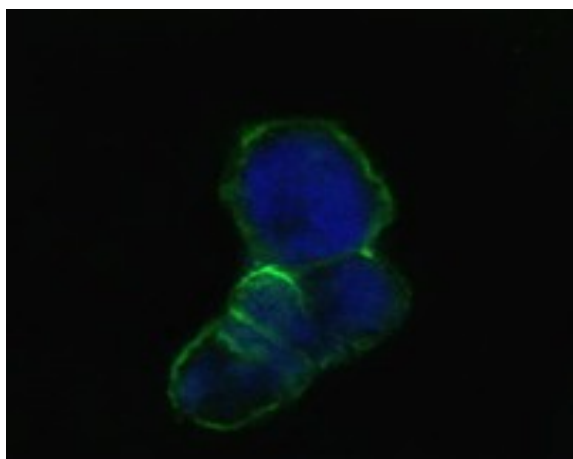
Products Images



Western Blot analysis using Lipocalin-1 Monoclonal Antibody against HEK2993 (1) and LCN1-hlgGfc transfected HEK2993 cell lysate (2).



Immunohistochemistry analysis of paraffin-embedded human Prostate tissues with AEC staining using Lipocalin-1 Monoclonal Antibody.



Confocal immunofluorescence analysis of methanol-fixed HEK2993 cells transfected with LCN1-hlgGfc using Lipocalin-1 Monoclonal Antibody (green), showing membrane localization. Blue: DRAQ5 fluorescent DNA dye.