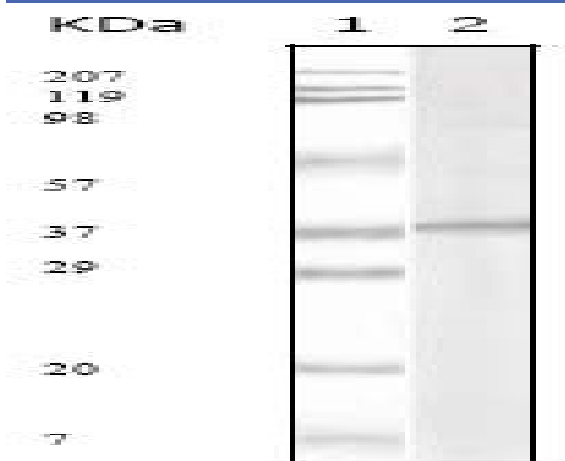


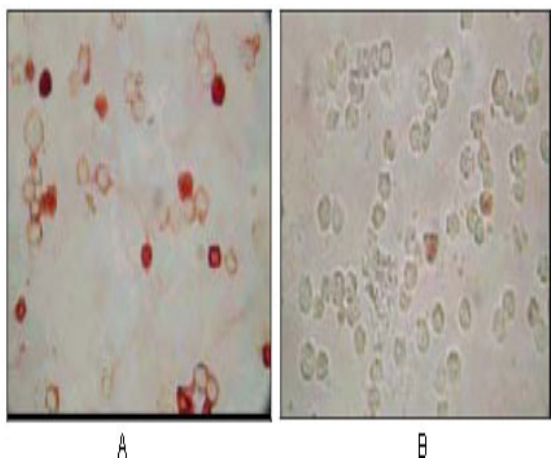
## KSHV ORF62 Monoclonal Antibody

<b>Catalog No :</b>	YM0408
<b>Reactivity :</b>	KsheepV
<b>Applications :</b>	WB;ICC;ELISA
<b>Target :</b>	KSHV ORF62
<b>Human Gene Id :</b>	4.96146e+006
<b>Immunogen :</b>	Purified recombinant fragment of human KSHV ORF62 expressed in E. Coli.
<b>Specificity :</b>	KSHV ORF62 Monoclonal Antibody detects KSHV ORF62 protein.
<b>Formulation :</b>	Liquid in PBS containing 50% glycerol, 0.5% BSA and 0.02% sodium azide.
<b>Source :</b>	Monoclonal, Mouse
<b>Dilution :</b>	WB 1:500 - 1:2000. Immunocytochemistry: 1:200 - 1:1000. ELISA: 1:10000. Not yet tested in other applications.
<b>Purification :</b>	Affinity purification
<b>Storage Stability :</b>	-15°C to -25°C/1 year(Do not lower than -25°C)
<b>P References :</b>	1. Chang Y. et al. 1994. Science. 266:1865-1869. 2. Russo J.J. et al. 1996. PNAS. 93: 14862-14867. 3. Wu L. et al. 2000. J VirolOct; 74(20):9646-54.
<b>Sort :</b>	9007
<b>No4 :</b>	1
<b>Host :</b>	Mouse
<b>Modifications :</b>	Unmodified

## Products Images



Western Blot analysis using KSHV ORF62 Monoclonal Antibody against KSHV ORF62 recombinant protein.



Immunocytochemistry analysis of TPA induced BCBL-1 cells (A) and uninduced BCBL-1 cells (B) using KSHV ORF62 Monoclonal Antibody with AEC staining.