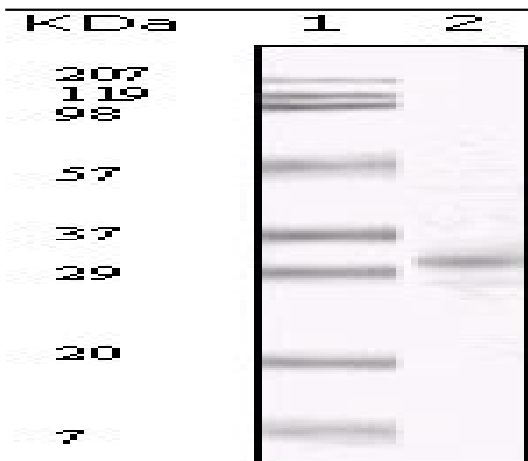


## KSHV ORF26 Monoclonal Antibody

<b>Catalog No :</b>	YM0406
<b>Reactivity :</b>	Human
<b>Applications :</b>	WB;ELISA
<b>Target :</b>	KSHV ORF26
<b>Human Gene Id :</b>	4.96151e+006
<b>Immunogen :</b>	Purified recombinant fragment of KSHV ORF26 expressed in E. Coli.
<b>Specificity :</b>	KSHV ORF26 Monoclonal Antibody detects KSHV ORF26 protein.
<b>Formulation :</b>	Liquid in PBS containing 50% glycerol, 0.5% BSA and 0.02% sodium azide.
<b>Source :</b>	Monoclonal, Mouse
<b>Dilution :</b>	WB 1:500 - 1:2000. ELISA: 1:10000. Not yet tested in other applications.
<b>Purification :</b>	Affinity purification
<b>Storage Stability :</b>	-15°C to -25°C/1 year(Do not lower than -25°C)
<b>P References :</b>	1. James J . Proc. Natl. Acad. Sci Vol. 1996. 93, pp. 14862-14867.
<b>Sort :</b>	9005
<b>No4 :</b>	1
<b>Host :</b>	Mouse
<b>Modifications :</b>	Unmodified

## Products Images



Western Blot analysis using KSHV ORF26 Monoclonal Antibody against TPA induced BCBL-1 cell lysate.