

KLHL21 Monoclonal Antibody

Catalog No :	YM0402
Reactivity :	Human
Applications :	WB;IHC;IF;ELISA
Target :	KLHL21
Gene Name :	KLHL21
Protein Name :	Kelch-like protein 21
Human Gene Id :	9903
Human Swiss Prot No :	Q9UJP4
Mouse Swiss Prot No :	Q3U410
Immunogen :	Purified recombinant fragment of human KLHL21 expressed in E. Coli.
Specificity :	KLHL21 Monoclonal Antibody detects endogenous levels of KLHL21 protein.
Formulation :	Liquid in PBS containing 50% glycerol, 0.5% BSA and 0.02% sodium azide.
Source :	Monoclonal, Mouse
Dilution :	WB 1:500 - 1:2000. IHC 1:200 - 1:1000. ELISA: 1:10000.. IF 1:50-200
Purification :	Affinity purification
Storage Stability :	-15°C to -25°C/1 year(Do not lower than -25°C)
Molecularweight :	67kD
P References :	1. DNA Res. 1997 Oct 31;4(5):345-9. 2. DNA Res. 2005;12(2):117-26. 3. J Cell Biol. 2009 Dec 14;187(6):791-800.

Background : function:Probable substrate-specific adapter of an E3 ubiquitin-protein ligase complex which mediates the ubiquitination and subsequent proteasomal degradation of target proteins.,pathway:Protein modification; protein ubiquitination.,similarity:Contains 1 BACK (BTB/Kelch associated) domain.,similarity:Contains 1 BTB (POZ) domain.,similarity:Contains 6 Kelch repeats.,subunit:Interacts with cul3.,

Function : function:Probable substrate-specific adapter of an E3 ubiquitin-protein ligase complex which mediates the ubiquitination and subsequent proteasomal degradation of target proteins.,pathway:Protein modification; protein ubiquitination.,similarity:Contains 1 BACK (BTB/Kelch associated) domain.,similarity:Contains 1 BTB (POZ) domain.,similarity:Contains 6 Kelch repeats.,subunit:Interacts with cul3.,

Subcellular Location : Cytoplasm, cytoskeleton, spindle . Localizes to the spindle midzone and targets CUL3 to this region.

Expression : Brain,Hepatoma,Hippocampus,Lung carcinoma,PCR rescued clones,Spleen,

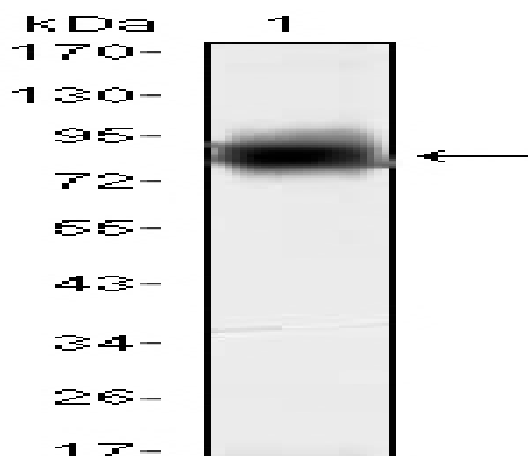
Sort : 8961

No4 : 1

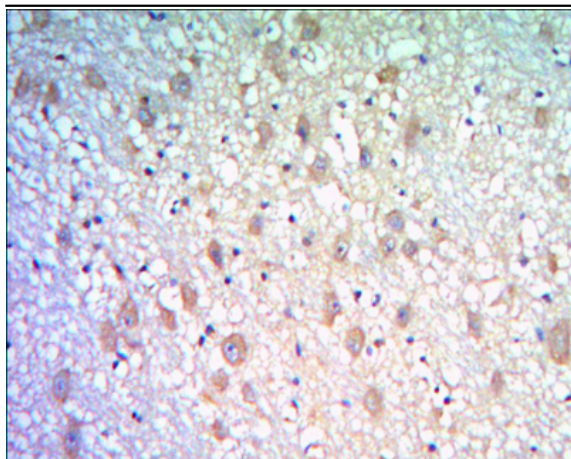
Host : Mouse

Modifications : Unmodified

Products Images



Western Blot analysis using KLHL21 Monoclonal Antibody against recombinant KLHL21 protein (1).



Immunohistochemistry analysis of paraffin-embedded human brain tissues with DAB staining using KLHL21 Monoclonal Antibody.