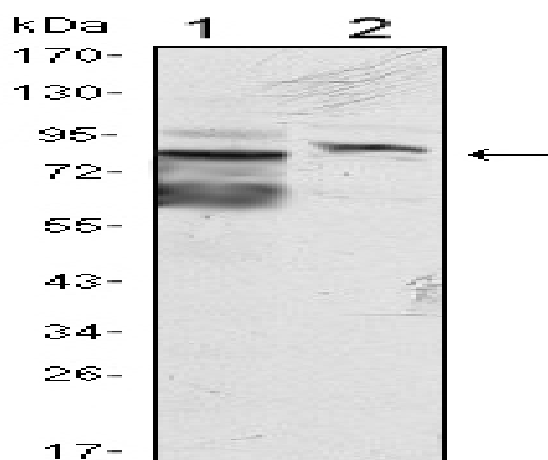


KLHL11 Monoclonal Antibody

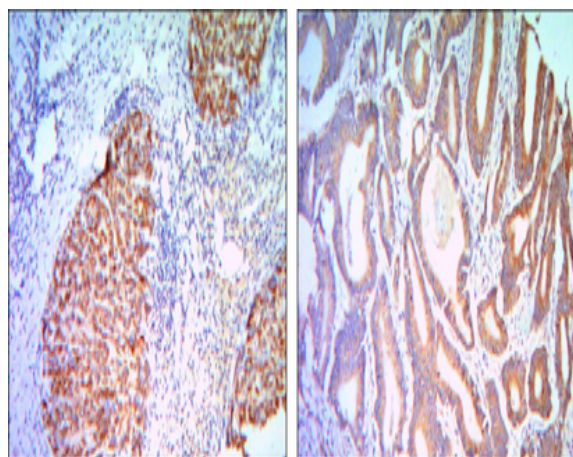
Catalog No :	YM0399
Reactivity :	Human
Applications :	WB;IHC;IF;ELISA
Target :	KLHL11
Gene Name :	KLHL11
Protein Name :	Kelch-like protein 11
Human Gene Id :	55175
Human Swiss Prot No :	Q9NVR0
Mouse Swiss Prot No :	Q8CE33
Immunogen :	Purified recombinant fragment of human KLHL11 expressed in E. Coli.
Specificity :	KLHL11 Monoclonal Antibody detects endogenous levels of KLHL11 protein.
Formulation :	Liquid in PBS containing 50% glycerol, 0.5% BSA and 0.02% sodium azide.
Source :	Monoclonal, Mouse
Dilution :	WB 1:500 - 1:2000. IHC 1:200 - 1:1000. IF 1:200 - 1:1000. ELISA: 1:10000. Not yet tested in other applications.
Purification :	Affinity purification
Storage Stability :	-15°C to -25°C/1 year(Do not lower than -25°C)
Molecularweight :	80kD
P References :	<ol style="list-style-type: none">1. Gerhard DS, et al. Genome Res, 2004 Oct.2. Ota T, et al. Nat Genet, 2004 Jan.3. Strausberg RL, et al. Proc Natl Acad Sci U S A, 2002 Dec 24.

Background :	similarity:Contains 1 BACK (BTB/Kelch associated) domain.,similarity:Contains 1 BTB (POZ) domain.,similarity:Contains 5 Kelch repeats.,
Function :	similarity:Contains 1 BACK (BTB/Kelch associated) domain.,similarity:Contains 1 BTB (POZ) domain.,similarity:Contains 5 Kelch repeats.,
Subcellular Location :	cytoplasm,SCF ubiquitin ligase complex,
Expression :	Testis,
Sort :	8956
No4 :	1
Host :	Mouse
Modifications :	Unmodified

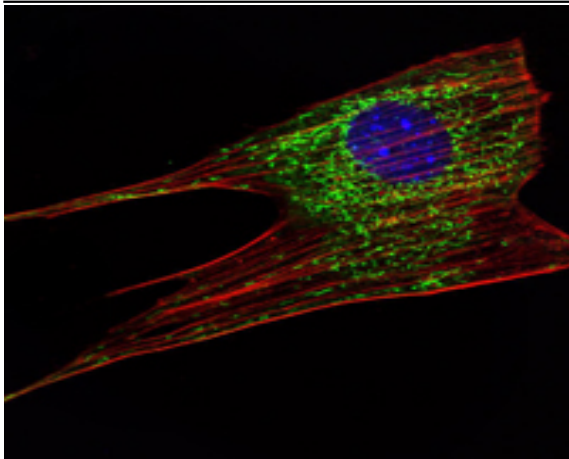
Products Images



Western Blot analysis using KLHL11 Monoclonal Antibody against HeLa (1) and MCF-7 (2) cell lysate.



Immunohistochemistry analysis of paraffin-embedded liver cancer (right) and colon cancer tissues (left) with DAB staining using KLHL11 Monoclonal Antibody.



Immunofluorescence analysis of NIH/3T3 cells using KLHL11 Monoclonal Antibody (green). Blue: DRAQ5 fluorescent DNA dye. Red: Actin filaments have been labeled with Alexa Fluor-555 phalloidin.