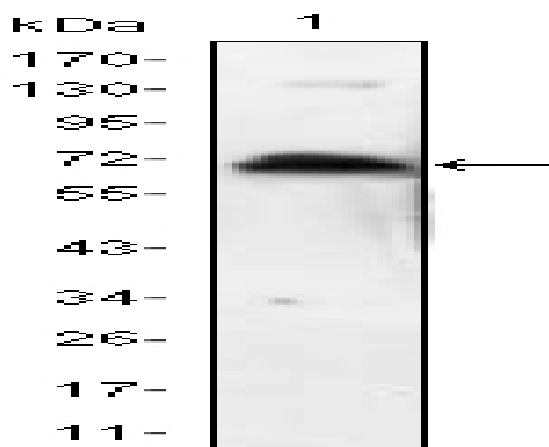


## KLHL1 Monoclonal Antibody

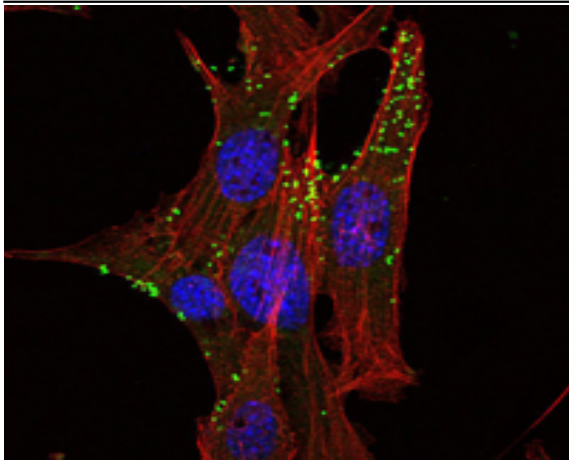
<b>Catalog No :</b>	YM0397
<b>Reactivity :</b>	Human
<b>Applications :</b>	WB;IF;ELISA
<b>Target :</b>	KLHL1
<b>Gene Name :</b>	KLHL1
<b>Protein Name :</b>	Kelch-like protein 1
<b>Human Gene Id :</b>	57626
<b>Human Swiss Prot No :</b>	Q9NR64
<b>Mouse Swiss Prot No :</b>	Q9JI74
<b>Immunogen :</b>	Purified recombinant fragment of human KLHL1 expressed in E. Coli.
<b>Specificity :</b>	KLHL1 Monoclonal Antibody detects endogenous levels of KLHL1 protein.
<b>Formulation :</b>	Liquid in PBS containing 50% glycerol, 0.5% BSA and 0.02% sodium azide.
<b>Source :</b>	Monoclonal, Mouse
<b>Dilution :</b>	WB 1:500 - 1:2000. IF 1:200 - 1:1000. ELISA: 1:10000. Not yet tested in other applications.
<b>Purification :</b>	Affinity purification
<b>Storage Stability :</b>	-15°C to -25°C/1 year(Do not lower than -25°C)
<b>Molecularweight :</b>	83kD
<b>P References :</b>	<ol style="list-style-type: none"><li>1. DNA Res. 2000 Apr 28;7(2):143-50.</li><li>2. Nat Genet. 2004 Jan;36(1):40-5.</li><li>3. Science. 2005 Mar 11;307(5715):1621-5.</li></ol>

<b>Background :</b>	The KLHL1 protein belongs to a family of actin-organizing proteins related to Drosophila Kelch (Nemes et al., 2000 [PubMed 10888605]).[supplied by OMIM, Feb 2010],
<b>Function :</b>	function:May play a role in organizing the actin cytoskeleton of the brain cells.,similarity:Contains 1 BTB (POZ) domain.,similarity:Contains 6 Kelch repeats.,tissue specificity:Highly expressed in brain.,
<b>Subcellular Location :</b>	Cytoplasm, cytoskeleton.
<b>Expression :</b>	Highly expressed in brain.
<b>Sort :</b>	8955
<b>No4 :</b>	1
<b>Host :</b>	Mouse
<b>Modifications :</b>	Unmodified

## Products Images



Western Blot analysis using KLHL1 Monoclonal Antibody antibody against KLHL1 recombinant protein.



Immunofluorescence analysis of NIH/3T3 cells using KLHL1 Monoclonal Antibody (green). Red: Actin filaments have been labeled with Alexa Fluor-555 phalloidin.