

THAP11 Monoclonal Antibody

Catalog No :	YM0617
Reactivity :	Human
Applications :	WB;IHC;IF;FCM;ELISA
Target :	THAP11
Gene Name :	THAP11
Protein Name :	THAP domain-containing protein 11
Human Gene Id :	57215
Human Swiss Prot No :	Q96EK4
Mouse Swiss Prot No :	Q9JJD0
Immunogen :	Purified recombinant fragment of human THAP11 expressed in E. Coli.
Specificity :	THAP11 Monoclonal Antibody detects endogenous levels of THAP11 protein.
Formulation :	Liquid in PBS containing 50% glycerol, 0.5% BSA and 0.02% sodium azide.
Source :	Monoclonal, Mouse
Dilution :	WB 1:500 - 1:2000. IHC 1:200 - 1:1000. IF 1:200 - 1:1000. Flow cytometry: 1:200 - 1:400. ELISA: 1:10000. Not yet tested in other applications.
Purification :	Affinity purification
Storage Stability :	-15°C to -25°C/1 year(Do not lower than -25°C)
Molecularweight :	34kD
P References :	1. Genomics. 1993 Jun;16(3):572-9. 2. Cell. 2008 Jun 27;133(7):1162-74. 3. Cell Death Differ. 2009 Mar;16(3):395-405.

Background : The protein encoded by this gene contains a THAP domain, which is a conserved DNA-binding domain that has striking similarity to the site-specific DNA-binding domain (DBD) of Drosophila P element transposases. [provided by RefSeq, Jul 2008],

Function : function:Transcriptional repressor that plays a central role for embryogenesis and the pluripotency of embryonic stem (ES) cells. Sequence-specific DNA-binding factor that represses gene expression in pluripotent ES cells by directly binding to key genetic loci and recruiting epigenetic modifiers.,polymorphism:The length of the poly-Gln region is variable in the population.,similarity:Belongs to the THAP11 family.,similarity:Contains 1 THAP-type zinc finger.,subcellular location:May be regulated by shuttling of the protein between the cytoplasm and nucleus.,subunit:Interacts (via coiled coil domain) with HCFC1.,

Subcellular Location : Nucleus . Cytoplasm . May be regulated by shuttling of the protein between the cytoplasm and nucleus. .

Expression : Brain,Neuroblastoma,Uterus,

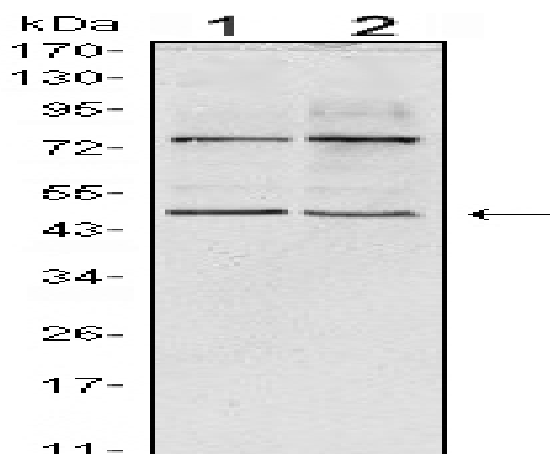
Sort : 17097

No4 : 1

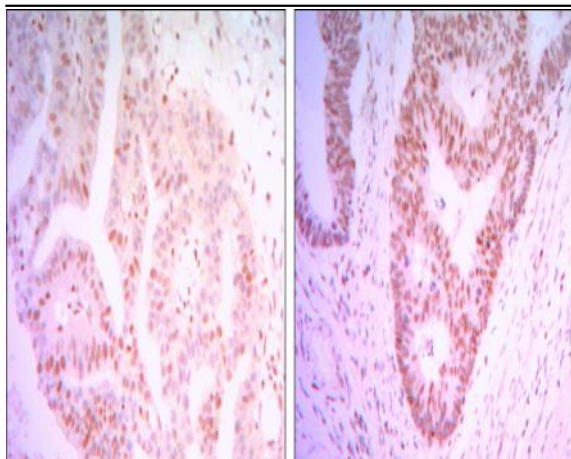
Host : Mouse

Modifications : Unmodified

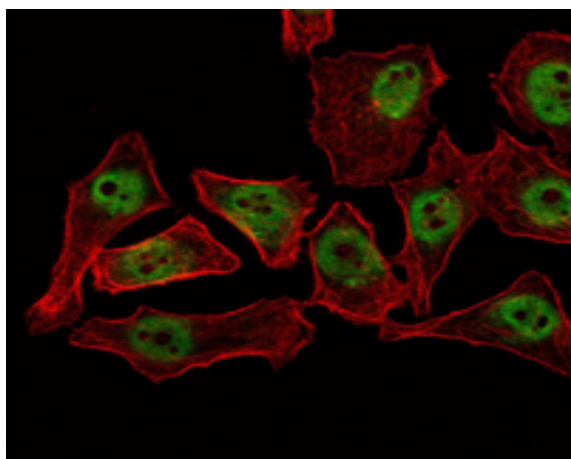
Products Images



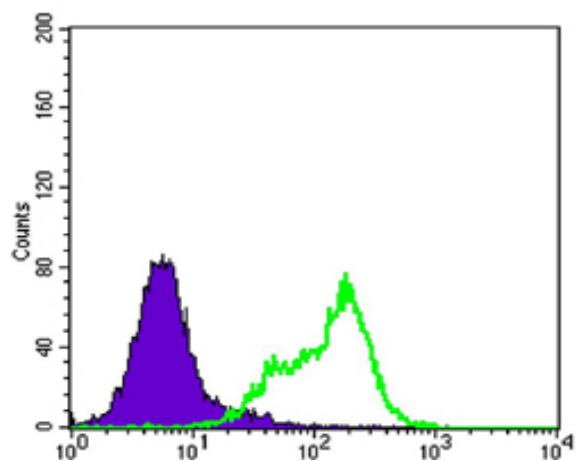
Western Blot analysis using THAP11 Monoclonal Antibody against HeLa (1) and NTERA-2 (2) cell lysate.



Immunohistochemistry analysis of paraffin-embedded colon cancer tissues (left) and ovary cancer tissues (right) with DAB staining using THAP11 Monoclonal Antibody.



Immunofluorescence analysis of NTERA-2 cells using THAP11 Monoclonal Antibody (green). Red: Actin filaments have been labeled with Alexa Fluor-555 phalloidin.



Flow cytometric analysis of Hela cells using THAP11 Monoclonal Antibody (green) and negative control (purple).