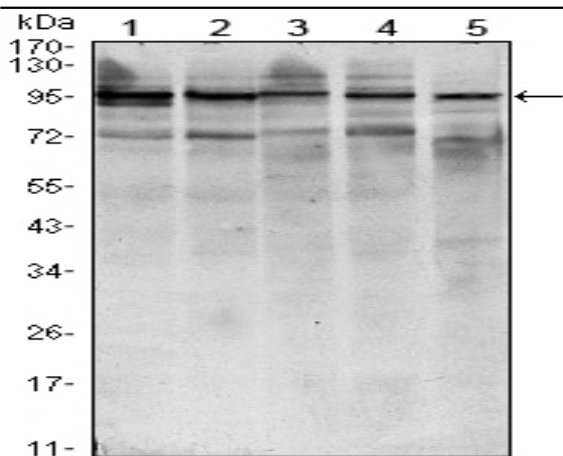


Stat6 Monoclonal Antibody

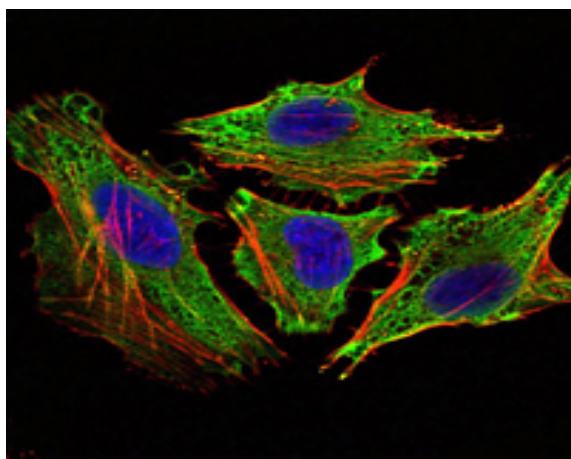
Catalog No :	YM0600
Reactivity :	Human;Mouse;Rat;Monkey
Applications :	WB;IF;ELISA
Target :	Stat6
Fields :	>>Necroptosis;>>JAK-STAT signaling pathway;>>Th1 and Th2 cell differentiation;>>Th17 cell differentiation;>>Hepatitis B;>>Pathways in cancer;>>Inflammatory bowel disease
Gene Name :	STAT6
Protein Name :	Signal transducer and activator of transcription 6
Human Gene Id :	6778
Human Swiss Prot No :	P42226
Mouse Gene Id :	20852
Mouse Swiss Prot No :	P52633
Immunogen :	Purified recombinant fragment of human Stat6 expressed in E. Coli.
Specificity :	Stat6 Monoclonal Antibody detects endogenous levels of Stat6 protein.
Formulation :	Liquid in PBS containing 50% glycerol, 0.5% BSA and 0.02% sodium azide.
Source :	Monoclonal, Mouse
Dilution :	WB 1:500 - 1:2000. IF 1:200 - 1:1000. ELISA: 1:10000. Not yet tested in other applications.
Purification :	Affinity purification
Storage Stability :	-15°C to -25°C/1 year(Do not lower than -25°C)

Molecularweight :	94kD
Cell Pathway :	Jak_STAT;
P References :	<ol style="list-style-type: none">1. Pediatr Nephrol. 2009 Mar;24(3):489-95.2. Mol Immunol. 2009 Jun;46(10):2080-9.3. Am J Hum Genet. 2009 Nov;85(5):628-42.
Background :	<p>The protein encoded by this gene is a member of the STAT family of transcription factors. In response to cytokines and growth factors, STAT family members are phosphorylated by the receptor associated kinases, and then form homo- or heterodimers that translocate to the cell nucleus where they act as transcription activators. This protein plays a central role in exerting IL4 mediated biological responses. It is found to induce the expression of BCL2L1/BCL-X(L), which is responsible for the anti-apoptotic activity of IL4. Knockout studies in mice suggested the roles of this gene in differentiation of T helper 2 (Th2) cells, expression of cell surface markers, and class switch of immunoglobulins. Alternative splicing results in multiple transcript variants.[provided by RefSeq, May 2010],</p>
Function :	<p>function:Carries out a dual function: signal transduction and activation of transcription. Involved in interleukin-4 signalling.,PTM:Tyrosine phosphorylated following stimulation by IL-4 and IL-3.,similarity:Belongs to the transcription factor STAT family.,similarity:Contains 1 SH2 domain.,subcellular location:Translocated into the nucleus in response to phosphorylation.,subunit:Forms a homodimer or a heterodimer with a related family member (By similarity). Interacts with NCOA1 via its C-terminal LXXLL motif.,</p>
Subcellular Location :	Cytoplasm. Nucleus. Translocated into the nucleus in response to phosphorylation.
Expression :	Uterus,
Sort :	16726
No4 :	1
Host :	Mouse
Modifications :	Unmodified

Products Images



Western Blot analysis using Stat6 Monoclonal Antibody against HEK293 (1), NIH/3T3 (2), MCF-7 (3), Raw246.7 (4) and PC-12 (5) cell lysate.



Immunofluorescence analysis of HeLa cells using Stat6 Monoclonal Antibody (green). Blue: DRAQ5 fluorescent DNA dye. Red: Actin filaments have been labeled with Alexa Fluor-555 phalloidin.