

IGFBP2 Monoclonal Antibody

Catalog No :	YM0355
Reactivity :	Human
Applications :	WB;IHC;IF;ELISA
Target :	IGFBP2
Gene Name :	IGFBP2
Protein Name :	Insulin-like growth factor-binding protein 2
Human Gene Id :	3485
Human Swiss Prot No :	P18065
Mouse Swiss Prot No :	P47877
Immunogen :	Purified recombinant fragment of protein IGFBP2 (aa180-328) expressed in E. Coli.
Specificity :	IGFBP2 Monoclonal Antibody detects endogenous levels of IGFBP2 protein.
Formulation :	Liquid in PBS containing 50% glycerol, 0.5% BSA and 0.02% sodium azide.
Source :	Monoclonal, Mouse
Dilution :	WB 1:500 - 1:2000. IHC 1:200 - 1:1000. ELISA: 1:10000.. IF 1:50-200
Purification :	Affinity purification
Storage Stability :	-15°C to -25°C/1 year(Do not lower than -25°C)
Molecularweight :	35kD
P References :	1. Oncol Rep. 2005 Feb;13(2):341-5. 2. Prostate. 2005 Jun 15;64(1):9-19. 3. Bone. 2005 Dec;37(6):741-50.

Background : The protein encoded by this gene is one of six similar proteins that bind insulin-like growth factors I and II (IGF-I and IGF-II). The encoded protein can be secreted into the bloodstream, where it binds IGF-I and IGF-II with high affinity, or it can remain intracellular, interacting with many different ligands. High expression levels of this protein promote the growth of several types of tumors and may be predictive of the chances of recovery of the patient. Several transcript variants, one encoding a secreted isoform and the others encoding nonsecreted isoforms, have been found for this gene. [provided by RefSeq, Sep 2015],

Function : function:IGF-binding proteins prolong the half-life of the IGFs and have been shown to either inhibit or stimulate the growth promoting effects of the IGFs on cell culture. They alter the interaction of IGFs with their cell surface receptors.,PTM:O-glycosylated.,similarity:Contains 1 IGFBP N-terminal domain.,similarity:Contains 1 thyroglobulin type-1 domain.,subunit:Binds IGF2 more than IGF1.,

Subcellular Location : Secreted.

Expression : Brain,Cerebrospinal fluid,Fetal liver,Ovary,Placenta,Retina

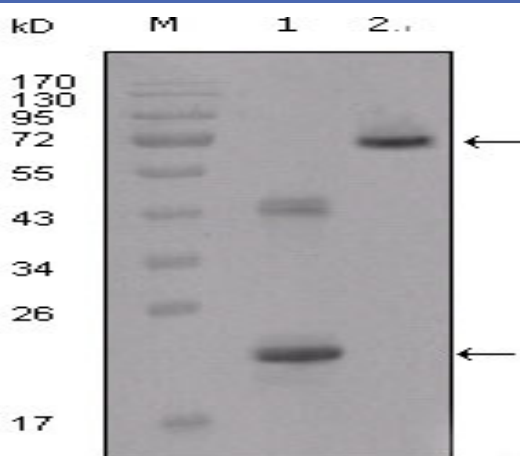
Sort : 8351

No4 : 1

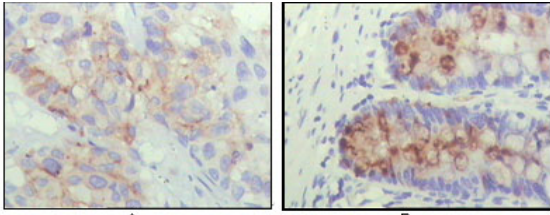
Host : Mouse

Modifications : Unmodified

Products Images

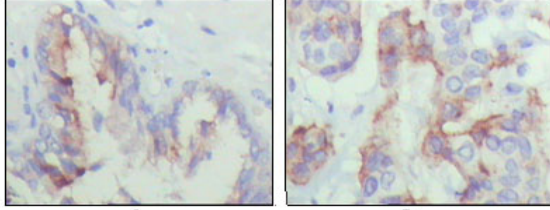


Western Blot analysis using IGFBP2 Monoclonal Antibody against truncated IGFBP2-His recombinant protein (1) and truncated IGFBP2 (aa40-328)-hlgGfC transfected CHO-K1 cell lysate (2).



A

B



C

D

Immunohistochemistry analysis of paraffin-embedded human lung cancer (A), rectum(B), prostate (C), colon cancer (D) showing cytoplasmic localization with DAB staining using IGFBP2 Monoclonal Antibody.