

Rictor Monoclonal Antibody

Catalog No :	YM0560
Reactivity :	Human;Mouse;Monkey
Applications :	WB;IHC;IF;FCM;ELISA
Target :	Rictor
Fields :	>>mTOR signaling pathway
Gene Name :	RICTOR
Protein Name :	Rapamycin-insensitive companion of mTOR
Human Gene Id :	253260
Human Swiss Prot No :	Q6R327
Mouse Gene Id :	78757
Mouse Swiss Prot No :	Q6QI06
Immunogen :	Purified recombinant fragment of human Rictor expressed in E. Coli.
Specificity :	Rictor Monoclonal Antibody detects endogenous levels of Rictor protein.
Formulation :	Liquid in PBS containing 50% glycerol, 0.5% BSA and 0.02% sodium azide.
Source :	Monoclonal, Mouse
Dilution :	WB 1:500 - 1:2000. IHC 1:200 - 1:1000. IF 1:200 - 1:1000. Flow cytometry: 1:200 - 1:400. ELISA: 1:10000. Not yet tested in other applications.
Purification :	Affinity purification
Storage Stability :	-15°C to -25°C/1 year(Do not lower than -25°C)

Molecularweight : 192kD

Cell Pathway : mTOR;

P References :

1. Genes Dev. 2006 Oct 15;20(20):2820-32.
2. Biochem Biophys Res Commun. 2008 Aug 8;372(4):578-83.

Background : RICTOR and MTOR (FRAP1; MIM 601231) are components of a protein complex that integrates nutrient- and growth factor-derived signals to regulate cell growth (Sarbasov et al., 2004 [PubMed 15268862]).[supplied by OMIM, Mar 2008],

Function : function:Plays an essential role in embryonic growth and development (By similarity). Part of the TORC2 complex which plays a critical role in AKT1 'Ser-473' phosphorylation, and may modulate the phosphorylation of PKCA and regulate actin cytoskeleton organization.,similarity:Belongs to the pianissimo family.,subunit:Forms part of the target of rapamycin 2 complex (TORC2) comprised of FRAP1, LST8, PROTOR1, RICTOR and MAPKAP1. TORC2 does not bind to and is not sensitive to FKBP12-rapamycin. Binds directly to FRAP1 and PROTOR1 within the TORC2 complex. May interact with PROTOR2.,

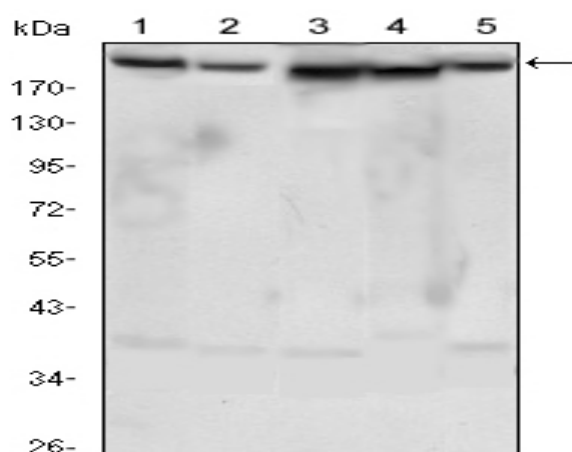
Subcellular Location : cytosol,TORC2 complex,

Expression : Amygdala,Brain,Epithelium,Lymph,

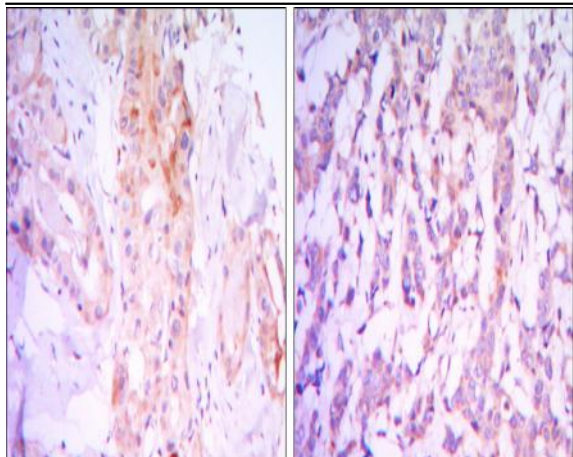
Sort : 14517

No4 : 1

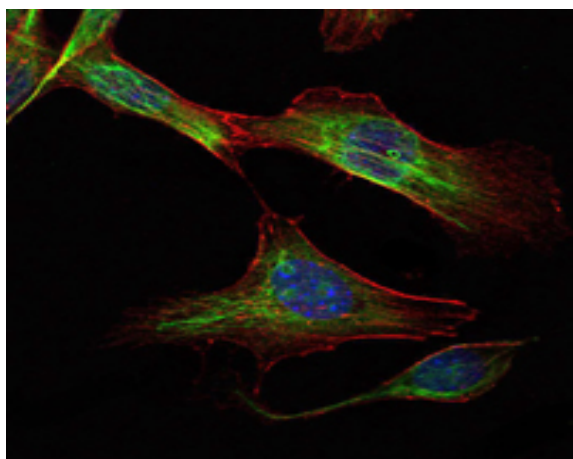
Products Images



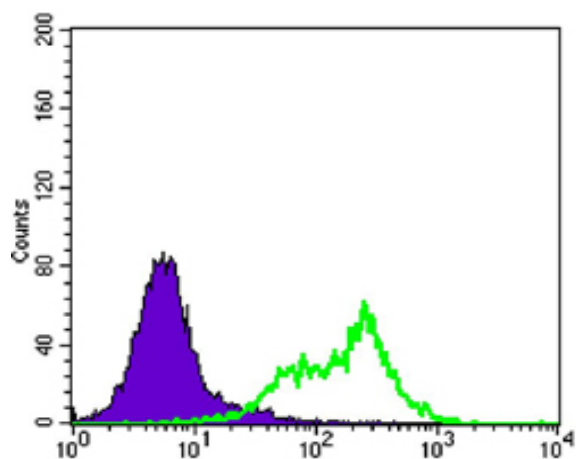
Western Blot analysis using Rictor Monoclonal Antibody against HeLa (1), PANC-1 (2), MOLT4 (3), HepG2 (4) and HEK293 (5) cell lysate.



Immunohistochemistry analysis of paraffin-embedded thyroid gland tissues (left) and human breast carcinoma (right) with DAB staining using Rictor Monoclonal Antibody.



Immunofluorescence analysis of NIH/3T3 cells using Rictor Monoclonal Antibody (green). Blue: DRAQ5 fluorescent DNA dye. Red: Actin filaments have been labeled with Alexa Fluor-555 phalloidin.



Flow cytometric analysis of HeLa cells using Rictor Monoclonal Antibody (green) and negative control (purple).