

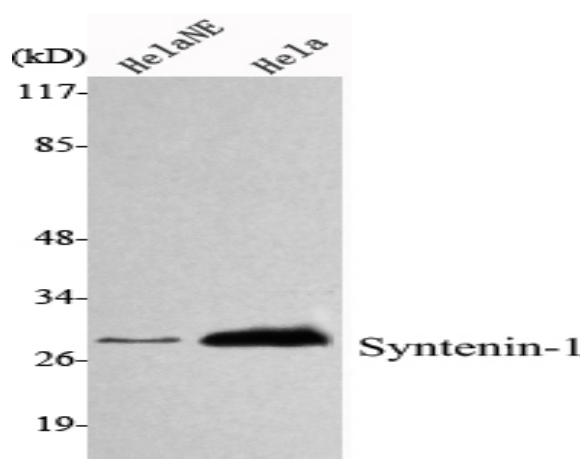
Syntenin-1 Monoclonal Antibody

Catalog No :	YM1100
Reactivity :	Human;Rat;Dog;Pig
Applications :	WB
Target :	Syntenin-1
Gene Name :	SDCBP
Protein Name :	Syntenin-1
Human Gene Id :	6386
Human Swiss Prot No :	O00560
Mouse Swiss Prot No :	O08992
Rat Gene Id :	83841
Rat Swiss Prot No :	Q9JI92
Immunogen :	Purified recombinant human Syntenin-1 protein fragments expressed in E.coli.
Specificity :	Syntenin-1 Monoclonal Antibody detects endogenous levels of Syntenin-1 protein.
Formulation :	Liquid in PBS containing 50% glycerol, 0.5% BSA and 0.02% sodium azide.
Source :	Monoclonal, Mouse
Dilution :	WB 1:1000 - 1:2000. Not yet tested in other applications.
Purification :	Affinity purification
Concentration :	1 mg/ml

Storage Stability :	-15°C to -25°C/1 year(Do not lower than -25°C)
Molecularweight :	32kD
Background :	<p>syndecan binding protein(SDCBP) Homo sapiens The protein encoded by this gene was initially identified as a molecule linking syndecan-mediated signaling to the cytoskeleton. The syntenin protein contains tandemly repeated PDZ domains that bind the cytoplasmic, C-terminal domains of a variety of transmembrane proteins. This protein may also affect cytoskeletal-membrane organization, cell adhesion, protein trafficking, and the activation of transcription factors. The protein is primarily localized to membrane-associated adherens junctions and focal adhesions but is also found at the endoplasmic reticulum and nucleus. Alternative splicing results in multiple transcript variants encoding different isoforms. [provided by RefSeq, Jul 2008],</p>
Function :	<p>function:Seems to function as an adapter protein. In adherens junctions may function to couple syndecans to cytoskeletal proteins or signaling components. Seems to couple transcription factor SOX4 to the IL-5 receptor (IL5RA). May also play a role in vesicular trafficking. Seems to be required for the targeting of TGFA to the cell surface in the early secretory pathway.,induction:By gamma interferon in melanoma cells.,PTM:Phosphorylated on tyrosine residues.,similarity:Contains 2 PDZ (DHR) domains.,subcellular location:Mainly membrane-associated. Localized to adherens junctions, focal adhesions and endoplasmic reticulum. Colocalized with actin stress fibers. Also found in the nucleus. Identified by mass spectrometry in melanosome fractions from stage I to stage IV.,subunit:Monomer and homodimer (By similarity). Interacts with SDC1, SDC2, SDC3, SDC4, NRXN2, EPHA7, EPHB1, NF2 isoform 1, TG</p>
Subcellular Location :	<p>Cell junction, focal adhesion . Cell junction, adherens junction . Cell membrane ; Peripheral membrane protein . Endoplasmic reticulum membrane ; Peripheral membrane protein . Nucleus . Melanosome . Cytoplasm, cytosol . Cytoplasm, cytoskeleton . Secreted, extracellular exosome . Membrane raft . Mainly membrane-associated. Localized to adherens junctions, focal adhesions and endoplasmic reticulum. Colocalized with actin stress fibers. Also found in the nucleus. Identified by mass spectrometry in melanosome fractions from stage I to stage IV. Associated to the plasma membrane in the presence of FZD7 and phosphatidylinositol 4,5-bisphosphate (PIP2) (PubMed:27386966). .</p>
Expression :	<p>Expressed in lung cancers, including adenocarcinoma, squamous cell carcinoma and small-cell carcinoma (at protein level) (PubMed:25893292). Widely expressed. Expressed in fetal kidney, liver, lung and brain. In adult highest expression in heart and placenta.</p>
Sort :	16827
No4 :	1

Host : Mouse**Modifications :** Unmodified

Products Images



Western Blot analysis using Syntenin-1 Monoclonal Antibody against HeLa nuclear extract, HeLa cell lysate.