

Reg Ia Monoclonal Antibody

Catalog No :	YM0555
Reactivity :	Human
Applications :	IHC;IF;ELISA
Target :	Reg Ia
Gene Name :	REG1A
Protein Name :	Lithostathine-1-alpha
Human Gene Id :	5967
Human Swiss Prot No :	P05451
Immunogen :	Purified recombinant fragment of human Reg Ia fused with hlgGFc tag expressed in HEK293 cell line.
Specificity :	Reg Ia Monoclonal Antibody detects endogenous levels of Reg Ia protein.
Formulation :	Liquid in PBS containing 50% glycerol, 0.5% BSA and 0.02% sodium azide.
Source :	Monoclonal, Mouse
Dilution :	IHC 1:200 - 1:1000. IF 1:200 - 1:1000. ELISA: 1:10000. Not yet tested in other applications.
Purification :	Affinity purification
Storage Stability :	-15°C to -25°C/1 year(Do not lower than -25°C)
P References :	1. Pancreas. 2004 Jul;29(1):14-21. 2. Int J Cancer. 2008 Jul 15;123(2):409-13.
Background :	This gene is a type I subclass member of the Reg gene family. The Reg gene family is a multigene family grouped into four subclasses, types I, II, III and IV, based on the primary structures of the encoded proteins. This gene encodes a

protein that is secreted by the exocrine pancreas. It is associated with islet cell regeneration and diabetogenesis and may be involved in pancreatic lithogenesis. Reg family members REG1B, REGL, PAP and this gene are tandemly clustered on chromosome 2p12 and may have arisen from the same ancestral gene by gene duplication. [provided by RefSeq, Jul 2008],

Function :

caution:The composition of the O-linked carbohydrate on Thr-27 is complex and varied. In the crystallographic structure, the attached sugar appears to be N-acetylglucosamine, typical of an intracellular protein, rather than N-acetylgalactosamine.,developmental stage:High expression levels in fetal and infant brains; much lower in adult brains.,disease:Alzheimer disease and Down syndrome patients show enhanced expression of PSP-related transcripts and intraneuronal accumulation of PSP-like proteins in their brains.,function:Might act as an inhibitor of spontaneous calcium carbonate precipitation. May be associated with neuronal sprouting in brain, and with brain and pancreas regeneration.,online information:Lithostathine A,similarity:Contains 1 C-type lectin domain.,tissue specificity:In pancreatic acinar cells and, in lower levels, in brain.,

Subcellular Location :

Secreted.

Expression :

In pancreatic acinar cells and, in lower levels, in brain. Enhanced expression of PSP-related transcripts and intraneuronal accumulation of PSP-like proteins is found in brain from Alzheimer disease and Down syndrome patients.

Sort :

14371

No4 :

1

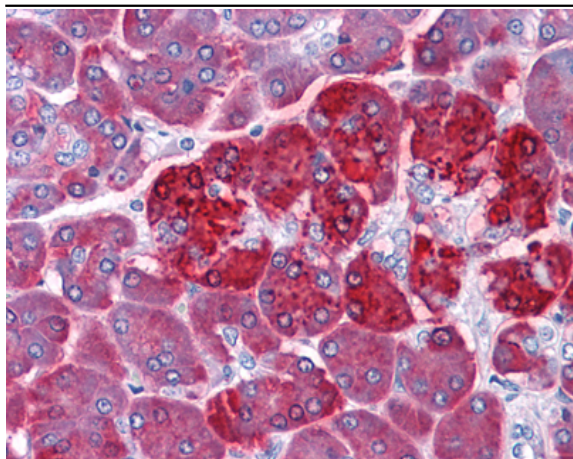
Host :

Mouse

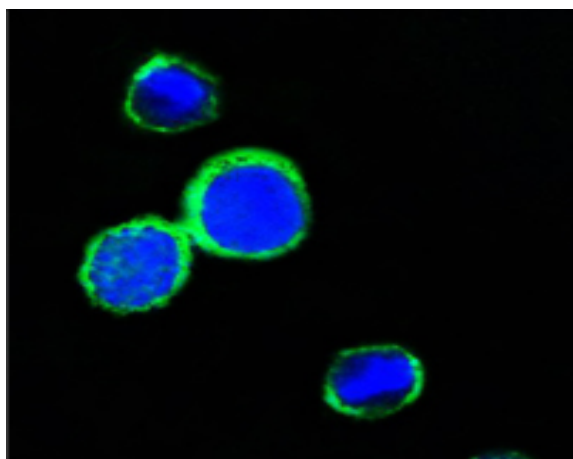
Modifications :

Unmodified

Products Images



Immunohistochemistry analysis of paraffin-embedded human Pancreas tissues with AEC staining using Reg Ia Monoclonal Antibody.



Confocal immunofluorescence analysis of PC12 cells using Reg Ia Monoclonal Antibody (green). Blue: DRAQ5 fluorescent DNA dye.