

## PTH Monoclonal Antibody

<b>Catalog No :</b>	YM0541
<b>Reactivity :</b>	Human
<b>Applications :</b>	WB;ELISA
<b>Target :</b>	Parathyroid Hormone
<b>Fields :</b>	>>Neuroactive ligand-receptor interaction;>>Parathyroid hormone synthesis, secretion and action;>>Endocrine and other factor-regulated calcium reabsorption;>>Rheumatoid arthritis
<b>Gene Name :</b>	PTH
<b>Protein Name :</b>	Parathyroid hormone
<b>Human Gene Id :</b>	5741
<b>Human Swiss Prot No :</b>	P01270
<b>Immunogen :</b>	Purified recombinant fragment of human PTH (aa1-115) expressed in E. Coli.
<b>Specificity :</b>	PTH Monoclonal Antibody detects endogenous levels of PTH protein.
<b>Formulation :</b>	Liquid in PBS containing 50% glycerol, 0.5% BSA and 0.02% sodium azide.
<b>Source :</b>	Monoclonal, Mouse
<b>Dilution :</b>	WB 1:500 - 1:2000. ELISA: 1:10000. Not yet tested in other applications.
<b>Purification :</b>	Affinity purification
<b>Storage Stability :</b>	-15°C to -25°C/1 year(Do not lower than -25°C)
<b>Molecularweight :</b>	13kD
<b>P References :</b>	1. Eur Spine J. 2006 Oct;15(10):1521-8. 2. Blood. 2008 May 1;111(9):4496-9.

3. Clin J Am Soc Nephrol. 2009 Sep;4(9):1465-76.

## Background :

This gene encodes a member of the parathyroid family of proteins. The encoded preproprotein is proteolytically processed to generate a protein that binds to the parathyroid hormone/parathyroid hormone-related peptide receptor and regulates blood calcium and phosphate levels. Excess production of the encoded protein, known as hyperparathyroidism, can result in hypercalcemia and kidney stones. On the other hand, defective processing of the encoded protein may lead to hypoparathyroidism, which can result in hypocalcemia and numbness. Alternative splicing results in multiple transcript variants. [provided by RefSeq, Oct 2015],

## Function :

disease:Defects in PTH are a cause of familial isolated hypoparathyroidism (FIH) [MIM:146200]. FIH exist both as autosomal dominant and recessive forms of hypoparathyroidism.,function:PTH elevates calcium level by dissolving the salts in bone and preventing their renal excretion.,online information:Parathyroid hormone entry,similarity:Belongs to the parathyroid hormone family.,

## Subcellular Location :

Secreted.

## Sort :

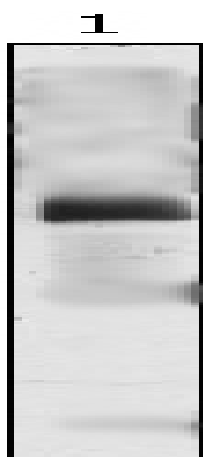
13150

## No4 :

1

## Products Images

kDa  
170-  
130-  
95-  
72-  
66-  
43-  
34-  
26-  
17-  
11-



Western Blot analysis using PTH Monoclonal Antibody against PTH-hlgGfc transfected HEK293 cell lysate.