

GCG Monoclonal Antibody

Catalog No :	YM0301
Reactivity :	Human
Applications :	WB;ELISA
Target :	Glucagon
Fields :	>>cAMP signaling pathway;>>Neuroactive ligand-receptor interaction;>>Thermogenesis;>>Insulin secretion;>>Glucagon signaling pathway
Gene Name :	GCG
Protein Name :	Glucagon
Human Gene Id :	2641
Human Swiss Prot No :	P01275
Mouse Swiss Prot No :	P55095
Immunogen :	Purified recombinant fragment of human GCG expressed in E. Coli.
Specificity :	GCG Monoclonal Antibody detects endogenous levels of GCG protein.
Formulation :	Liquid in PBS containing 50% glycerol, 0.5% BSA and 0.02% sodium azide.
Source :	Monoclonal, Mouse
Dilution :	WB 1:500 - 1:2000. ELISA: 1:10000. Not yet tested in other applications.
Purification :	Affinity purification
Storage Stability :	-15°C to -25°C/1 year(Do not lower than -25°C)
Molecularweight :	21kD

P References : 1. Int J Mol Med. 2008 Jul;22(1):127-32.
2. Physiol Behav. 2008 Aug 6;94(5):696-9.

Background : The protein encoded by this gene is actually a preproprotein that is cleaved into four distinct mature peptides. One of these, glucagon, is a pancreatic hormone that counteracts the glucose-lowering action of insulin by stimulating glycogenolysis and gluconeogenesis. Glucagon is a ligand for a specific G-protein linked receptor whose signalling pathway controls cell proliferation. Two of the other peptides are secreted from gut endocrine cells and promote nutrient absorption through distinct mechanisms. Finally, the fourth peptide is similar to glicentin, an active enteroglucagon. [provided by RefSeq, Jul 2008],

Function : function:Glicentin may modulate gastric acid secretion and the gastro-pyloro-duodenal activity. May play an important role in intestinal mucosal growth in the early period of life.,function:GLP-1 is a potent stimulator of glucose-dependent insulin release. Play important roles on gastric motility and the suppression of plasma glucagon levels. May be involved in the suppression of satiety and stimulation of glucose disposal in peripheral tissues, independent of the actions of insulin. Have growth-promoting activities on intestinal epithelium. May also regulate the hypothalamic pituitary axis (HPA) via effects on LH, TSH, CRH, oxytocin, and vasopressin secretion. Increases islet mass through stimulation of islet neogenesis and pancreatic beta cell proliferaton. Inhibits beta cell apoptosis.,function:GLP-2 stimulates intestinal growth and up-regulates villus height in the small intestine, c

Subcellular Location : Secreted .; [Glucagon-like peptide 1]: Secreted .

Expression : [Glucagon]: Secreted in the A cells of the islets of Langerhans. ; [Glucagon-like peptide 1]: Secreted in the A cells of the islets of Langerhans (PubMed:22037645). Secreted from enteroendocrine L cells throughout the gastrointestinal tract (PubMed:22037645). Also secreted in selected neurons in the brain. ; [Glucagon-like peptide 2]: Secreted from enteroendocrine cells throughout the gastrointestinal tract. Also secreted in selected neurons in the brain.; [Glicentin]: Secreted from enteroendocrine cells throughout the gastrointestinal tract.; [Oxyntomodulin]: Secreted from enteroendocrine cells throughout the gastrointestinal tract.

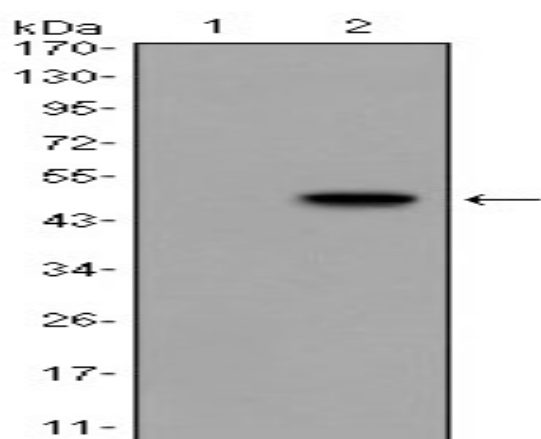
Sort : 6501

No4 : 1

Host : Mouse

Modifications : Unmodified

Products Images



Western Blot analysis using GCG Monoclonal Antibody against HEK293 (1) and GCG-hlgGfc transfected HEK293 (2) cell lysate.