

Msx-1 Monoclonal Antibody

Catalog No :	YM0453
Reactivity :	Human
Applications :	WB;ELISA
Target :	Msx-1
Fields :	>>Human T-cell leukemia virus 1 infection
Gene Name :	MSX1
Protein Name :	Homeobox protein MSX-1
Human Gene Id :	4487
Human Swiss Prot No :	P28360
Mouse Swiss Prot No :	P13297
Immunogen :	Purified recombinant fragment of human Msx-1 expressed in E. Coli.
Specificity :	Msx-1 Monoclonal Antibody detects endogenous levels of Msx-1 protein.
Formulation :	Liquid in PBS containing 50% glycerol, 0.5% BSA and 0.02% sodium azide.
Source :	Monoclonal, Mouse
Dilution :	WB 1:500 - 1:2000. ELISA: 1:10000. Not yet tested in other applications.
Purification :	Affinity purification
Storage Stability :	-15°C to -25°C/1 year(Do not lower than -25°C)
Molecularweight :	31kD
P References :	1. Zhonghua Kou Qiang Yi Xue Za Zhi. 2008 Mar;43(3):157-9.

2. Endocr Pathol. 2008 Spring;19(1):54-61.

Background :

This gene encodes a member of the muscle segment homeobox gene family. The encoded protein functions as a transcriptional repressor during embryogenesis through interactions with components of the core transcription complex and other homeoproteins. It may also have roles in limb-pattern formation, craniofacial development, particularly odontogenesis, and tumor growth inhibition. Mutations in this gene, which was once known as homeobox 7, have been associated with nonsyndromic cleft lip with or without cleft palate 5, Witkop syndrome, Wolf-Hirschorn syndrome, and autosomal dominant hypodontia. [provided by RefSeq, Jul 2008],

Function :

disease:A chromosomal aberration involving MSX1 is a cause of Wolf-Hirschhorn syndrome (WHS) [MIM:194190]. WHS is caused by sub-telomeric deletions in the short arm of chromosome 4. WHS is characterized by profound mental retardation, heart defects, and facial clefting.,disease:Defects in MSX1 are a cause of autosomal dominant hypodontia (HYD1) [MIM:106600]; also known as familial or selective tooth agenesis. Absence of less than 6 teeth is referred to as hypodontia. Agenesis of one or more teeth constitutes one of the most common developmental anomalies in man. Reported incidences vary from 1.6% to 9.6%, excluding third molar (Wisdom tooth) agenesis, which occurs in 20% of the population.,disease:Defects in MSX1 are the cause of non-syndromic orofacial cleft type 5 (OFC5) [MIM:608874]; also called non-syndromic cleft lip with or without cleft palate 5. Non-syndromic orofacial cleft is a

Subcellular Location :

Nucleus.

Expression :

Expressed in the developing nail bed mesenchyme.

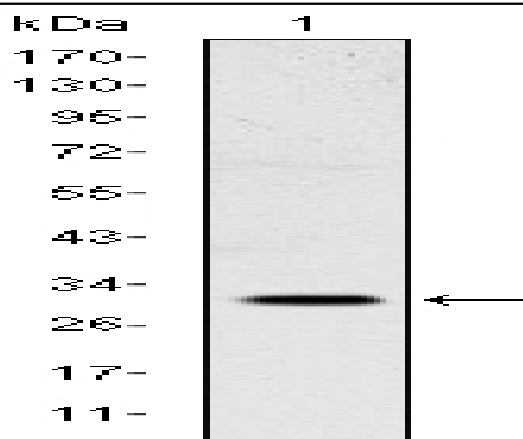
Sort :

10306

No4 :

1

Products Images



Western Blot analysis using Msx-1 Monoclonal Antibody against NTERA-2 cell lysate.

