

EphA6 Monoclonal Antibody

Catalog No :	YM0226
Reactivity :	Human
Applications :	WB;ELISA
Target :	EphA6
Fields :	>>Axon guidance
Gene Name :	EPHA6
Protein Name :	Ephrin type-A receptor 6
Human Gene Id :	285220
Human Swiss Prot No :	Q9UF33
Mouse Swiss Prot No :	Q62413
Immunogen :	Purified recombinant fragment of EphA6 (aa695-795) expressed in E. Coli.
Specificity :	EphA6 Monoclonal Antibody detects endogenous levels of EphA6 protein.
Formulation :	Liquid in PBS containing 50% glycerol, 0.5% BSA and 0.02% sodium azide.
Source :	Monoclonal, Mouse
Dilution :	WB 1:500 - 1:2000. ELISA: 1:10000. Not yet tested in other applications.
Purification :	Affinity purification
Storage Stability :	-15°C to -25°C/1 year(Do not lower than -25°C)
Molecularweight :	116kD
Cell Pathway :	Axon guidance;

P References :

1. Curr Biol. 2004 Feb 3;14(3):R121-3.
2. Genome Res. 2006 Jan;16(1):55-65.

Background :

catalytic activity:ATP + a [protein]-L-tyrosine = ADP + a [protein]-L-tyrosine phosphate.,function:Receptor for members of the ephrin-A family.,similarity:Belongs to the protein kinase superfamily. Tyr protein kinase family. Ephrin receptor subfamily.,similarity:Contains 1 protein kinase domain.,similarity:Contains 1 SAM (sterile alpha motif) domain.,similarity:Contains 2 fibronectin type-III domains.,tissue specificity:Expressed in brain and testis.,

Function :

catalytic activity:ATP + a [protein]-L-tyrosine = ADP + a [protein]-L-tyrosine phosphate.,function:Receptor for members of the ephrin-A family.,similarity:Belongs to the protein kinase superfamily. Tyr protein kinase family. Ephrin receptor subfamily.,similarity:Contains 1 protein kinase domain.,similarity:Contains 1 SAM (sterile alpha motif) domain.,similarity:Contains 2 fibronectin type-III domains.,tissue specificity:Expressed in brain and testis.,

Subcellular Location :

Membrane ; Single-pass type I membrane protein .

Expression :

Expressed in brain and testis.

Sort :

5632

No4 :

1

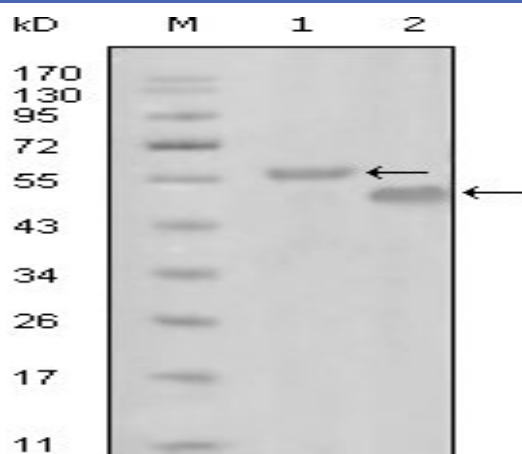
Host :

Mouse

Modifications :

Unmodified

Products Images



Western Blot analysis using EphA6 Monoclonal Antibody against truncated MBP-EphA6 recombinant protein (1) and truncated GST-EphA6(aa695-795) recombinant protein (2).