

Msi2 Monoclonal Antibody

Catalog No :	YM0452
Reactivity :	Human
Applications :	WB;IHC;IF;ELISA
Target :	Msi2
Fields :	>>mRNA surveillance pathway
Gene Name :	MSI2
Protein Name :	RNA-binding protein Musashi homolog 2
Human Gene Id :	124540
Human Swiss Prot No :	Q96DH6
Mouse Swiss Prot No :	Q920Q6
Immunogen :	Purified recombinant fragment of human Msi2 expressed in E. Coli.
Specificity :	Msi2 Monoclonal Antibody detects endogenous levels of Msi2 protein.
Formulation :	Liquid in PBS containing 50% glycerol, 0.5% BSA and 0.02% sodium azide.
Source :	Monoclonal, Mouse
Dilution :	WB 1:500 - 1:2000. IHC 1:200 - 1:1000. ELISA: 1:10000.. IF 1:50-200
Purification :	Affinity purification
Storage Stability :	-15°C to -25°C/1 year(Do not lower than -25°C)
Molecularweight :	35kD
P References :	1. Am J Hum Genet. 2009 Nov;85(5):628-42.

2. Haematologica. 2008 Dec;93(12):1903-7.

Background : This gene encodes an RNA-binding protein that is a member of the Musashi protein family. The encoded protein is transcriptional regulator that targets genes involved in development and cell cycle regulation. Mutations in this gene are associated with poor prognosis in certain types of cancers. This gene has also been shown to be rearranged in certain cancer cells. [provided by RefSeq, Apr 2016],

Function : disease:Chromosomal aberrations involving MSI2 may contribute to disease progression in chronic myeloid leukemia. Translocation t(7;17)(p15;q23) with HOXA9; translocation t(7;17)(q32-34;q23).,function:RNA binding protein that regulates the expression of target mRNAs at the translation level. May play a role in the proliferation and maintenance of stem cells in the central nervous system.,induction:Up-regulated in astrocytes after brain injury.,PTM:Phosphorylated.,similarity:Belongs to the Musashi family.,similarity:Contains 2 RRM (RNA recognition motif) domains.,subcellular location:Associated with polysomes.,tissue specificity:Ubiquitous; detected at low levels.,

Subcellular Location : Cytoplasm. Associated with polysomes. .

Expression : Ubiquitous; detected at low levels.

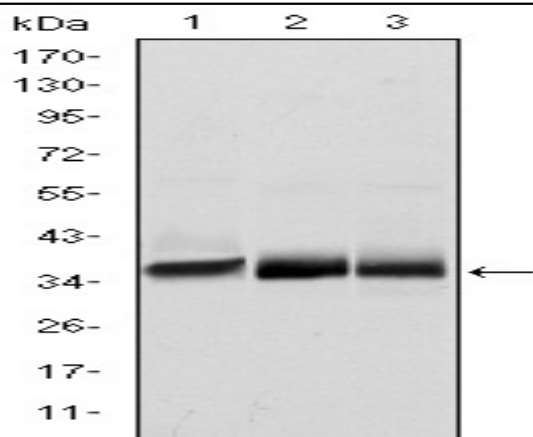
Sort : 10286

No4 : 1

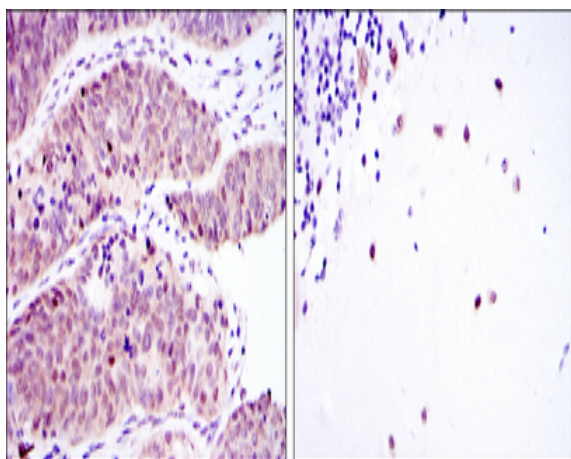
Host : Mouse

Modifications : Unmodified

Products Images



Western Blot analysis using Msi2 Monoclonal Antibody against NTERA-2 (1), SW620 (2) and T47D (3) cell lysate.



Immunohistochemistry analysis of paraffin-embedded ovarian cancer (left) and cerebellum tissues (right) with DAB staining using Msi2 Monoclonal Antibody.

