

Msi1 Monoclonal Antibody

Catalog No :	YM0451
Reactivity :	Human
Applications :	WB;FCM;ELISA
Target :	Msi1
Fields :	>>mRNA surveillance pathway
Gene Name :	MSI1
Protein Name :	RNA-binding protein Musashi homolog 1
Human Gene Id :	4440
Human Swiss Prot No :	O43347
Mouse Swiss Prot No :	Q61474
Immunogen :	Purified recombinant fragment of human Msi1 expressed in E. Coli.
Specificity :	Msi1 Monoclonal Antibody detects endogenous levels of Msi1 protein.
Formulation :	Liquid in PBS containing 50% glycerol, 0.5% BSA and 0.02% sodium azide.
Source :	Monoclonal, Mouse
Dilution :	WB 1:500 - 1:2000. Flow cytometry: 1:200 - 1:400. ELISA: 1:10000. Not yet tested in other applications.
Purification :	Affinity purification
Storage Stability :	-15°C to -25°C/1 year(Do not lower than -25°C)
Molecularweight :	39kD

P References : 1. BMC Cancer. 2008 Apr 18;8:108.
2. Gastroenterology. 2008 May;134(5):1448-58.

Background : This gene encodes a protein containing two conserved tandem RNA recognition motifs. Similar proteins in other species function as RNA-binding proteins and play central roles in posttranscriptional gene regulation. Expression of this gene has been correlated with the grade of the malignancy and proliferative activity in gliomas and melanomas. A pseudogene for this gene is located on chromosome 11q13. [provided by RefSeq, Jul 2008],

Function : domain:The first RNA recognition motif binds more strongly to RNA compared to the second one.,function:RNA binding protein that regulates the expression of target mRNAs at the translation level. Regulates expression of the NOTCH1 antagonist NUMB. Binds RNA containing the sequence 5'-GUUAGUUAGUUAGUU-3' and other sequences containing the pattern 5'-[GA]U(1-3)AGU-3'. May play a role in the proliferation and maintenance of stem cells in the central nervous system.,similarity:Belongs to the Musashi family.,similarity:Contains 2 RRM (RNA recognition motif) domains.,tissue specificity:Detected in fetal kidney, brain, liver and lung, and in adult brain and pancreas. Detected in hepatoma cell lines.,

Subcellular Location : Cytoplasm . Nucleus .

Expression : Detected in fetal kidney, brain, liver and lung, and in adult brain and pancreas. Detected in hepatoma cell lines.

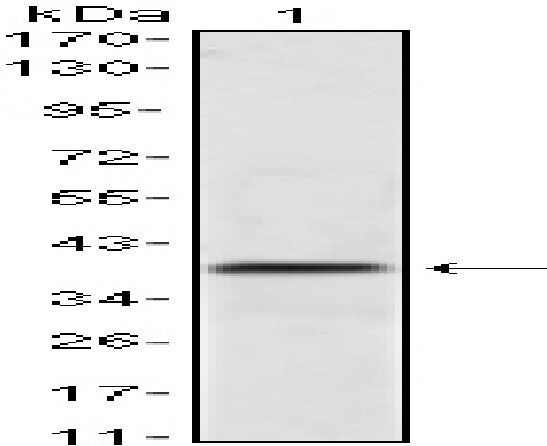
Sort : 10285

No4 : 1

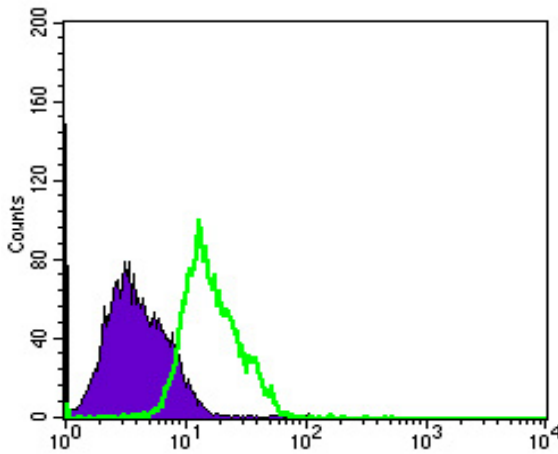
Host : Mouse

Modifications : Unmodified

Products Images



Western Blot analysis using Msi1 Monoclonal Antibody against NTERA-2 cell lysate.



Flow cytometric analysis of PC-2 cells using Msi1 Monoclonal Antibody (green) and negative control (purple).

