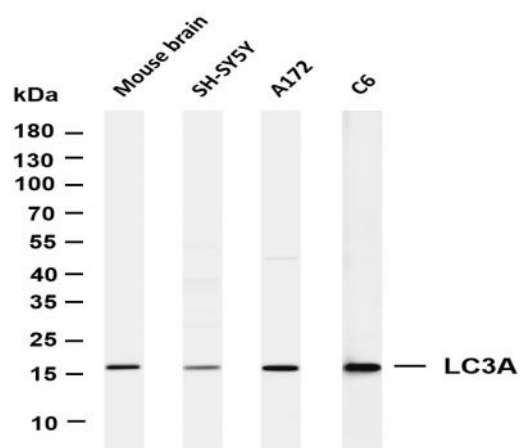


LC3A (PT0130R) PT® Rabbit mAb

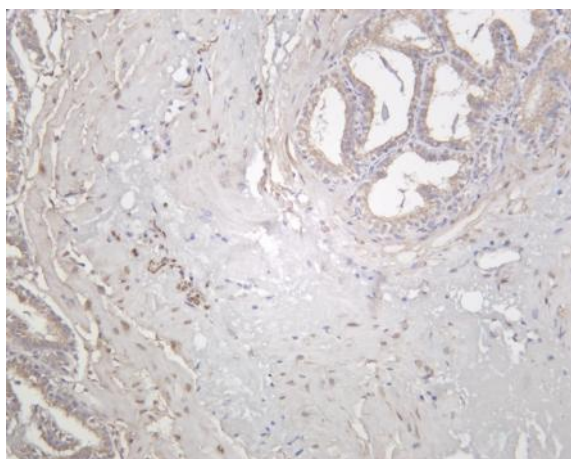
Catalog No :	YM8072
Reactivity :	Human; Mouse; Rat;
Applications :	WB;IHC;IF;IP;ELISA
Target :	LC3A
Fields :	>>Mitophagy - animal;>>Autophagy - animal;>>Ferroptosis;>>Apelin signaling pathway;>>NOD-like receptor signaling pathway;>>Amyotrophic lateral sclerosis;>>Pathways of neurodegeneration - multiple diseases;>>Shigellosis;>>Kaposi sarcoma-associated herpesvirus infection
Gene Name :	MAP1LC3A
Protein Name :	LC3A
Human Gene Id :	84557
Human Swiss Prot No :	Q9H492
Mouse Swiss Prot No :	Q91VR7
Rat Swiss Prot No :	Q6XVN8
Specificity :	endogenous
Formulation :	PBS, 50% glycerol, 0.05% Proclin 300, 0.05%BSA
Source :	Monoclonal, rabbit, IgG, Kappa
Dilution :	IHC 1:200-1:1000, WB 1:1000-1:5000, IF 1:200-1:1000, ELISA 1:5000-1:20000, IP 1:50-1:200,
Purification :	Protein A
Storage Stability :	-15°C to -25°C/1 year(Do not lower than -25°C)

Molecularweight :	14kD
Observed Band :	16kD
Background :	<p>MAP1A and MAP1B are microtubule-associated proteins which mediate the physical interactions between microtubules and components of the cytoskeleton. MAP1A and MAP1B each consist of a heavy chain subunit and multiple light chain subunits. The protein encoded by this gene is one of the light chain subunits and can associate with either MAP1A or MAP1B. Two transcript variants encoding different isoforms have been found for this gene. The expression of variant 1 is suppressed in many tumor cell lines, suggesting that may be involved in carcinogenesis. [provided by RefSeq, Feb 2012],</p>
Function :	<p>function:Probably involved in formation of autophagosomal vacuoles (autophagosomes).,PTM:The precursor molecule is cleaved by APG4B/ATG4B to form the cytosolic form, LC3-I. This is activated by APG7L/ATG7, transferred to ATG3 and conjugated to phospholipid to form the membrane-bound form, LC3-II.,similarity:Belongs to the MAP1 LC3 family.,subcellular location:LC3-II binds to the autophagic membranes.,subunit:3 different light chains, LC1, LC2 and LC3, can associate with MAP1A and MAP1B proteins.,tissue specificity:Most abundant in heart, brain, liver, skeletal muscle and testis but absent in thymus and peripheral blood leukocytes.,</p>
Subcellular Location :	Cytoplasm
Expression :	Most abundant in heart, brain, liver, skeletal muscle and testis but absent in thymus and peripheral blood leukocytes.
Tag :	hot,recombinant
Sort :	582
No3 :	ab128025
No4 :	1
Host :	Rabbit
Modifications :	Unmodified

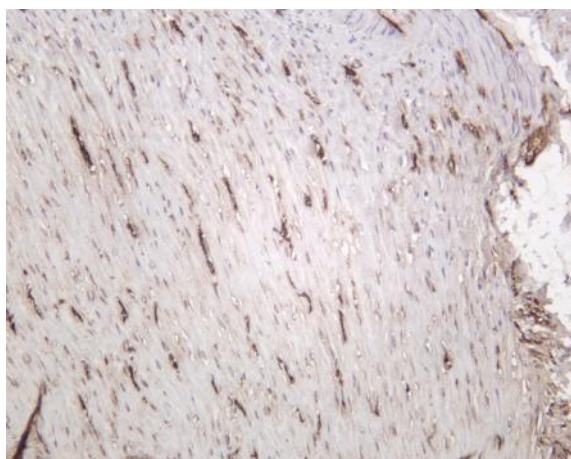
Products Images



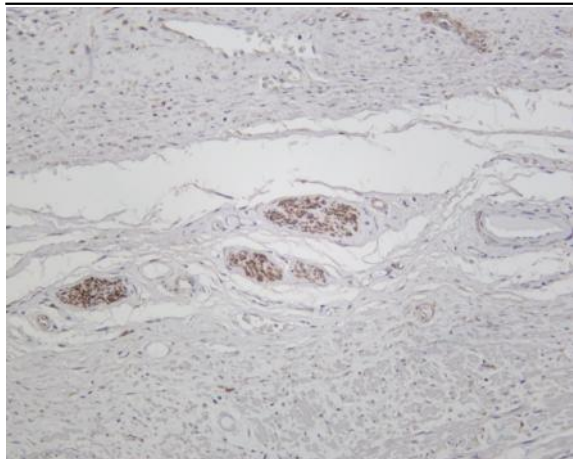
Various whole cell lysates were separated by 4-20% SDS-PAGE, and the membrane was blotted with anti-LC3A (PT0130R) antibody. The HRP-conjugated Goat anti-Rabbit IgG(H + L) antibody was used to detect the antibody. Lane 1: Mouse brain Lane 2: SH-SY5Y Lane 3: A172 Lane 4: C6 Predicted band size: 14kDa Observed band size: 16kDa



Mouse prostate was stained with anti-LC3A (PT0130R) rabbit antibody



Rat colon was stained with anti-LC3A (PT0130R) rabbit antibody



Human prostate was stained with anti-LC3A (PT0130R) rabbit antibody