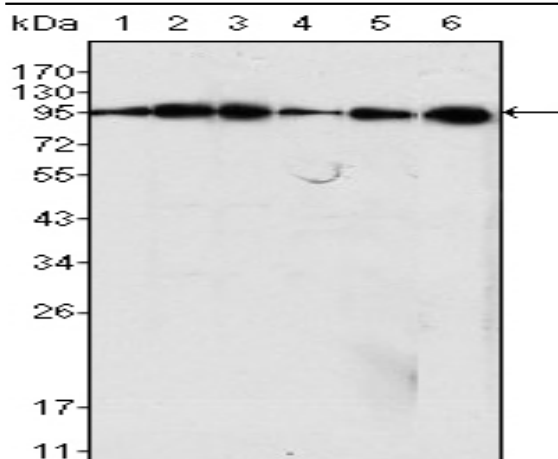


Dynamin I Monoclonal Antibody

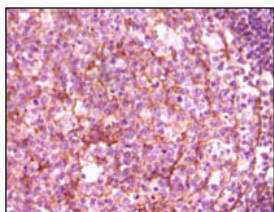
Catalog No :	YM0202
Reactivity :	Human
Applications :	WB;IHC;IF;ELISA
Target :	Dynamin I
Fields :	>>Phospholipase D signaling pathway;>>Endocytosis;>>Synaptic vesicle cycle;>>Endocrine and other factor-regulated calcium reabsorption;>>Bacterial invasion of epithelial cells
Gene Name :	DNM1
Protein Name :	Dynamin-1
Human Gene Id :	1759
Human Swiss Prot No :	Q05193
Mouse Swiss Prot No :	P39053
Immunogen :	Purified recombinant fragment of human Dynamin I expressed in E. Coli.
Specificity :	Dynamin I Monoclonal Antibody detects endogenous levels of Dynamin I protein.
Formulation :	Liquid in PBS containing 50% glycerol, 0.5% BSA and 0.02% sodium azide.
Source :	Monoclonal, Mouse
Dilution :	WB 1:500 - 1:2000. IHC 1:200 - 1:1000. ELISA: 1:10000.. IF 1:50-200
Purification :	Affinity purification
Storage Stability :	-15°C to -25°C/1 year(Do not lower than -25°C)
Molecularweight :	97kD

Cell Pathway :	Endocytosis;Fc gamma R-mediated phagocytosis;
P References :	1. Annie Quan and Phillip J. Robinson. Methods Enzymol. 2005; 404:556-69. 2. Jiyun Yoo, Moon-Jin Jeong, Byoung-Mog Kwon. J. Biol. Chem., Mar 2002; 277: 11904 – 11909
Background :	dynamin 1(DNM1) Homo sapiens This gene encodes a member of the dynamin subfamily of GTP-binding proteins. The encoded protein possesses unique mechanochemical properties used to tubulate and sever membranes, and is involved in clathrin-mediated endocytosis and other vesicular trafficking processes. Actin and other cytoskeletal proteins act as binding partners for the encoded protein, which can also self-assemble leading to stimulation of GTPase activity. More than sixty highly conserved copies of the 3' region of this gene are found elsewhere in the genome, particularly on chromosomes Y and 15. Alternatively spliced transcript variants encoding different isoforms have been described. [provided by RefSeq, Jul 2008],
Function :	catalytic activity:GTP + H(2)O = GDP + phosphate.,function:Microtubule-associated force-producing protein involved in producing microtubule bundles and able to bind and hydrolyze GTP. Most probably involved in vesicular trafficking processes, in particular endocytosis.,similarity:Belongs to the dynamin family.,similarity:Contains 1 GED domain.,similarity:Contains 1 PH domain.,subcellular location:Microtubule-associated.,subunit:Interacts with CAV1 and SH3GLB1. Binds SH3GL1, SH3GL2 and SH3GL3.,
Subcellular Location :	Cytoplasm . Cytoplasm, cytoskeleton . Microtubule-associated.
Expression :	Brain,Platelet,PNS,
Sort :	5325
No4 :	1
Host :	Mouse
Modifications :	Unmodified

Products Images



Western Blot analysis using Dynamin I Monoclonal Antibody against C6 (1), NIH/3T3 (2), SKN-SH (3), LN18 (4), SHSY5Y (5) cell lysate and rat brain tissues lysate (6).



Immunohistochemistry analysis of paraffin-embedded human lymph tissue (A), glioma tissue (B) and cerebellum tissue (C), showing membrane localization with DAB staining using Dynamin I Monoclonal Antibody.

