

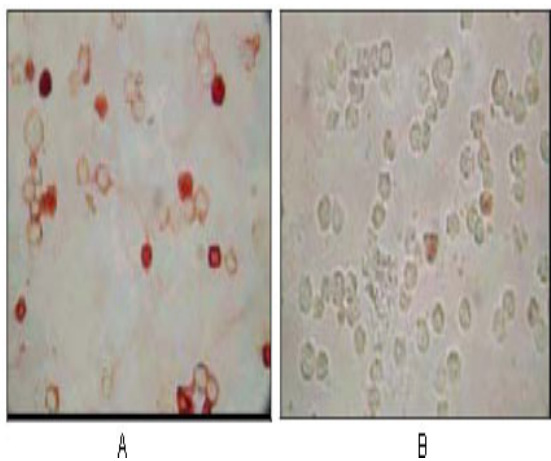
## KSHV ORF62 Monoclonal Antibody

|                            |  |
|----------------------------|--|
| <b>Catalog No :</b>        | YM0408   |
| <b>Reactivity :</b>        | KsheepV  |
| <b>Applications :</b>      | WB;ICC;ELISA   |
| <b>Target :</b>            | KSHV ORF62   |
| <b>Human Gene Id :</b>     | 4.96146e+006   |
| <b>Immunogen :</b>         | Purified recombinant fragment of human KSHV ORF62 expressed in E. Coli.  |
| <b>Specificity :</b>       | KSHV ORF62 Monoclonal Antibody detects KSHV ORF62 protein.   |
| <b>Formulation :</b>       | Liquid in PBS containing 50% glycerol, 0.5% BSA and 0.02% sodium azide.  |
| <b>Source :</b>            | Monoclonal, Mouse  |
| <b>Dilution :</b>          | WB 1:500 - 1:2000. Immunocytochemistry: 1:200 - 1:1000. ELISA: 1:10000. Not yet tested in other applications.  |
| <b>Purification :</b>      | Affinity purification  |
| <b>Storage Stability :</b> | -15°C to -25°C/1 year(Do not lower than -25°C)   |
| <b>P References :</b>      | 1. Chang Y. et al. 1994. Science. 266:1865-1869.<br>2. Russo J.J. et al. 1996. PNAS. 93: 14862-14867.<br>3. Wu L. et al. 2000. J VirolOct; 74(20):9646-54. |
| <b>Sort :</b>              | 9007   |
| <b>No4 :</b>               | 1  |
| <b>Host :</b>              | Mouse  |
| <b>Modifications :</b>     | Unmodified   |

## Products Images



Western Blot analysis using KSHV ORF62 Monoclonal Antibody against KSHV ORF62 recombinant protein.



Immunocytochemistry analysis of TPA induced BCBL-1 cells (A) and uninduced BCBL-1 cells (B) using KSHV ORF62 Monoclonal Antibody with AEC staining.