

Cortactin Monoclonal Antibody

Catalog No :	YM0161
Reactivity :	Human;Mouse
Applications :	WB;IHC;IF;ELISA
Target :	Cortactin
Fields :	>>Tight junction;>>Bacterial invasion of epithelial cells;>>Pathogenic Escherichia coli infection;>>Shigellosis;>>Proteoglycans in cancer
Gene Name :	CTTN
Protein Name :	Src substrate cortactin
Human Gene Id :	2017
Human Swiss Prot No :	Q14247
Mouse Gene Id :	13043
Mouse Swiss Prot No :	Q60598
Immunogen :	Purified recombinant fragment of human Cortactin expressed in E. Coli.
Specificity :	Cortactin Monoclonal Antibody detects endogenous levels of Cortactin protein.
Formulation :	Liquid in PBS containing 50% glycerol, 0.5% BSA and 0.02% sodium azide.
Source :	Monoclonal, Mouse
Dilution :	WB 1:500-2000;IHC 1:200-400;IF ICC 1:200-400;ELISA 1:5000-20000
Purification :	Affinity purification
Storage Stability :	-15°C to -25°C/1 year(Do not lower than -25°C)

Molecularweight : 62kD

Cell Pathway : Tight junction;Pathogenic Escherichia coli infection;

P References : 1. Ai Zheng. 2008 Mar;27(3):323-6.
2. Dis Markers. 2008;25(1):17-26.

Background : cortactin(CTTN) Homo sapiens This gene is overexpressed in breast cancer and squamous cell carcinomas of the head and neck. The encoded protein is localized in the cytoplasm and in areas of the cell-substratum contacts. This gene has two roles: (1) regulating the interactions between components of adherens-type junctions and (2) organizing the cytoskeleton and cell adhesion structures of epithelia and carcinoma cells. During apoptosis, the encoded protein is degraded in a caspase-dependent manner. The aberrant regulation of this gene contributes to tumor cell invasion and metastasis. Three splice variants that encode different isoforms have been identified for this gene. [provided by RefSeq, May 2010],

Function : function:May contribute to the organization of cell structure. The SH3 motif may function as a binding region to cytoskeleton. Tyrosine phosphorylation in transformed cells may contribute to cellular growth regulation and transformation.,online information:Cortactin entry,similarity:Contains 1 SH3 domain.,similarity:Contains 7 cortactin repeats.,subcellular location:Associated with membrane ruffles and lamellipodia.,subunit:Interacts with SHANK2 and SHANK3 via its SH2 domain. Also interacts with FGD1 (By similarity). Interacts with PLXDC2.,

Subcellular Location : Cytoplasm, cytoskeleton . Cell projection, lamellipodium . Cell projection, ruffle. Cell projection, dendrite . Cell projection . Cell membrane ; Peripheral membrane protein ; Cytoplasmic side . Cell projection, podosome . Cell junction . Cell junction, focal adhesion . Membrane, clathrin-coated pit . Cell projection, dendritic spine . Cytoplasm, cell cortex . Colocalizes transiently with PTK2/FAK1 at focal adhesions (By similarity). Associated with membrane ruffles and lamellipodia. In the presence of CTTNBP2NL, colocalizes with stress fibers (By similarity). In the presence of CTTNBP2, localizes at the cell cortex (By similarity). In response to neuronal activation by glutamate, redistributes from dendritic spines to the dendritic shaft (By similarity). Colocalizes with DNM2 at the basis

Expression : Coronary artery,Epithelium,Mammary gland,Placenta,Platelet,Testis,

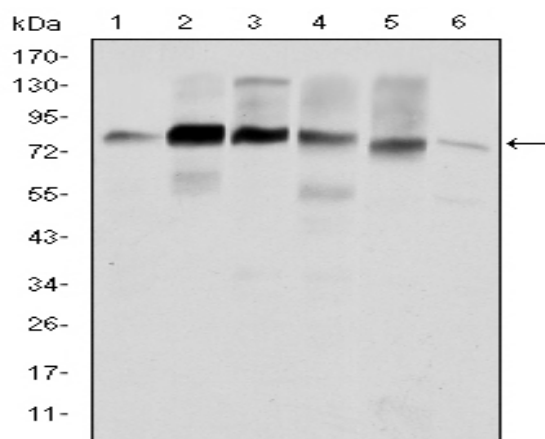
Tag : orthogonal

Sort : 779

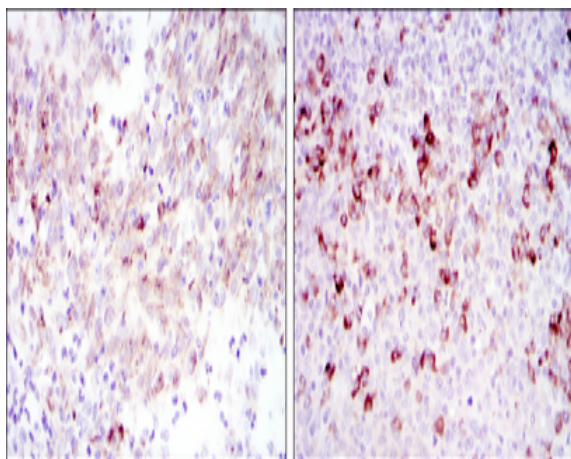
No4 : 1

Host : Mouse

Products Images



Western Blot analysis using Cortactin Monoclonal Antibody against HeLa (1), A431 (2), MCF-7 (3), SR-BR-3 (4), HepG2 (5) and NIH/3T3 (6) cell lysate.



Immunohistochemistry analysis of paraffin-embedded cervical cancer tissues (left) and tonsil tissues (right) with DAB staining using Cortactin Monoclonal Antibody.

