

KLF15 Monoclonal Antibody

Catalog No :	YM0396
Reactivity :	Human
Applications :	WB;ELISA
Target :	KLF15
Gene Name :	KLF15
Protein Name :	Krueppel-like factor 15
Human Gene Id :	28999
Human Swiss Prot No :	Q9UIH9
Mouse Swiss Prot No :	Q9EPW2
Immunogen :	Purified recombinant fragment of human KLF15 expressed in E. Coli.
Specificity :	KLF15 Monoclonal Antibody detects endogenous levels of KLF15 protein.
Formulation :	Liquid in PBS containing 50% glycerol, 0.5% BSA and 0.02% sodium azide.
Source :	Monoclonal, Mouse
Dilution :	WB 1:500 - 1:2000. ELISA: 1:10000. Not yet tested in other applications.
Purification :	Affinity purification
Storage Stability :	-15°C to -25°C/1 year(Do not lower than -25°C)
Molecularweight :	44kD
P References :	1. Mol Cell Biol. 2000 Oct;20(19):7319-31. 2. Diabetologia. 2005 Jul;48(7):1315-22.

Background : function:Transcriptional activator. Binds to the GA element of the CLCNKA promoter.,similarity:Belongs to the Sp1 C2H2-type zinc-finger protein family.,similarity:Contains 3 C2H2-type zinc fingers.,tissue specificity:Highly expressed in liver, followed by heart, skeletal muscle, and kidney. Not expressed in bone marrow or lymphoid tissues.,

Function : function:Transcriptional activator. Binds to the GA element of the CLCNKA promoter.,similarity:Belongs to the Sp1 C2H2-type zinc-finger protein family.,similarity:Contains 3 C2H2-type zinc fingers.,tissue specificity:Highly expressed in liver, followed by heart, skeletal muscle, and kidney. Not expressed in bone marrow or lymphoid tissues.,

Subcellular Location : Nucleus .

Expression : Highly expressed in liver, skeletal muscle, and kidney. Expressed in cardiomyocytes. Expression is highly reduced in cardiac tissue of patients with non-ischemic cardiomyopathy and aortic aneurysm, and in glomerular disease. Not expressed in bone marrow or lymphoid tissues.

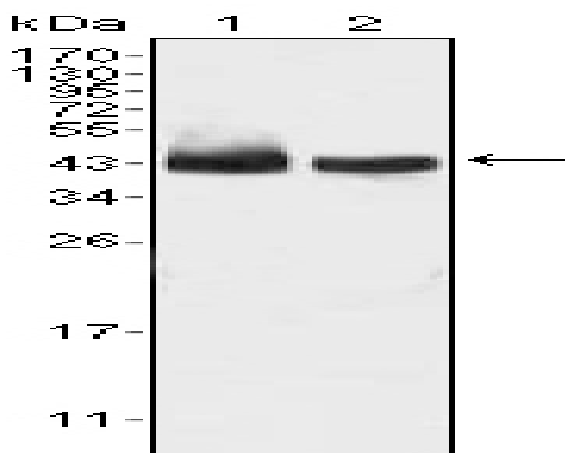
Sort : 8949

No4 : 1

Host : Mouse

Modifications : Unmodified

Products Images



Western Blot analysis using KLF15 Monoclonal Antibody against HepG2 (1) and SMMC-7721 (2) cell lysate.