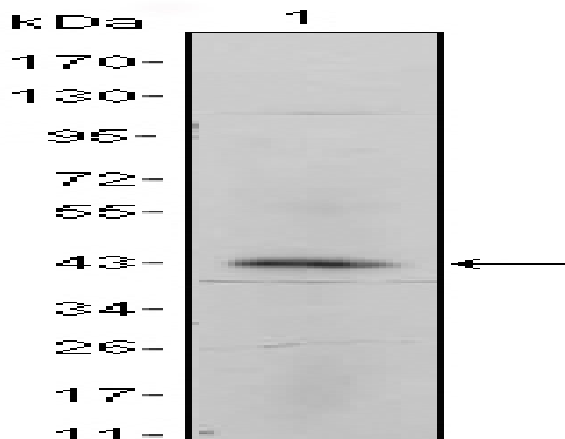


## Integrin $\alpha$ 5 Monoclonal Antibody

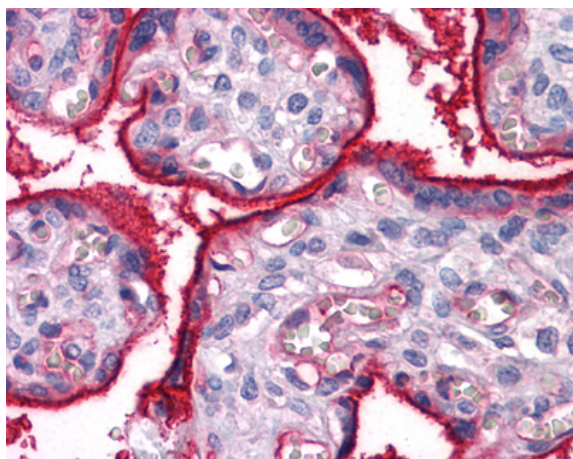
|                              |   |
|------------------------------|---|
| <b>Catalog No :</b>          | YM0379  |
| <b>Reactivity :</b>          | Human   |
| <b>Applications :</b>        | WB;IHC;IF;FCM;ELISA   |
| <b>Target :</b>              | Integrin $\alpha$ 5   |
| <b>Fields :</b>              | >>Phagosome;>>PI3K-Akt signaling pathway;>>Focal adhesion;>>ECM-receptor interaction;>>Hematopoietic cell lineage;>>Regulation of actin cytoskeleton;>>Bacterial invasion of epithelial cells;>>Shigellosis;>>Pertussis;>>Yersinia infection;>>Human papillomavirus infection;>>Herpes simplex virus 1 infection;>>Proteoglycans in cancer;>>MicroRNAs in cancer;>>Hypertrophic cardiomyopathy;>>Arrhythmogenic right ventricular cardiomyopathy;>>Dilated cardiomyopathy |
| <b>Gene Name :</b>           | ITGA5   |
| <b>Protein Name :</b>        | Integrin alpha-5  |
| <b>Human Gene Id :</b>       | 3678  |
| <b>Human Swiss Prot No :</b> | P08648  |
| <b>Mouse Swiss Prot No :</b> | P11688  |
| <b>Immunogen :</b>           | Purified recombinant fragment of human Integrin $\alpha$ 5 expressed in E. Coli.  |
| <b>Specificity :</b>         | Integrin $\alpha$ 5 Monoclonal Antibody detects endogenous levels of Integrin $\alpha$ 5 protein.   |
| <b>Formulation :</b>         | Liquid in PBS containing 50% glycerol, 0.5% BSA and 0.02% sodium azide.   |
| <b>Source :</b>              | Monoclonal, Mouse   |
| <b>Dilution :</b>            | WB 1:500 - 1:2000. IHC 1:200 - 1:1000. Flow cytometry: 1:200 - 1:400. ELISA: 1:10000.. IF 1:50-200  |

|                               |  |
|-------------------------------|--|
| <b>Purification :</b>         | Affinity purification  |
| <b>Storage Stability :</b>    | -15°C to -25°C/1 year(Do not lower than -25°C)   |
| <b>Molecularweight :</b>      | 115kD  |
| <b>Cell Pathway :</b>         | Focal adhesion;ECM-receptor interaction;Hematopoietic cell lineage;Regulates Actin and Cytoskeleton;Hypertrophic cardiomyopathy (HCM);Arrhythmogenic right ventricular cardiomyopathy (ARVC);Dilated car   |
| <b>P References :</b>         | <ol style="list-style-type: none"><li>1. Proc Natl Acad Sci USA. 1993. 90(22):10553-7.</li><li>2. J Cell Biol. 1998. 143(7):2081-92.</li><li>3. Mol Biol Cell. 2000. 11(9):3109-21.</li><li>4. J Cell Biol. 2001. 152(1):65-73.</li><li>5. J Biol Chem. 2002.</li></ol>  |
| <b>Background :</b>           | integrin subunit alpha 5(ITGA5) Homo sapiens The product of this gene belongs to the integrin alpha chain family. Integrins are heterodimeric integral membrane proteins composed of an alpha subunit and a beta subunit that function in cell surface adhesion and signaling. The encoded preproprotein is proteolytically processed to generate light and heavy chains that comprise the alpha 5 subunit. This subunit associates with the beta 1 subunit to form a fibronectin receptor. This integrin may promote tumor invasion, and higher expression of this gene may be correlated with shorter survival time in lung cancer patients. Note that the integrin alpha 5 and integrin alpha V subunits are encoded by distinct genes. [provided by RefSeq, Oct 2015], |
| <b>Function :</b>             | function:Integrin alpha-5/beta-1 is a receptor for fibronectin and fibrinogen. It recognizes the sequence R-G-D in its ligands. In case of HIV-1 infection, the interaction with extracellular viral Tat protein seems to enhance angiogenesis in Kaposi's sarcoma lesions.,similarity:Belongs to the integrin alpha chain family.,similarity:Contains 7 FG-GAP repeats.,subunit:Heterodimer of an alpha and a beta subunit. The alpha subunit is composed of an heavy and a light chain linked by a disulfide bond. Alpha-5 associates with beta-1. Interacts with HPS5 and NISCH. Interacts with HIV-1 Tat. Interacts with RAB21.,   |
| <b>Subcellular Location :</b> | Membrane; Single-pass type I membrane protein. Cell junction, focal adhesion . Cell surface .  |
| <b>Expression :</b>           | Liver,Placenta,  |
| <b>Sort :</b>                 | 8604   |
| <b>No4 :</b>                  | 1  |
| <b>Host :</b>                 | Mouse  |

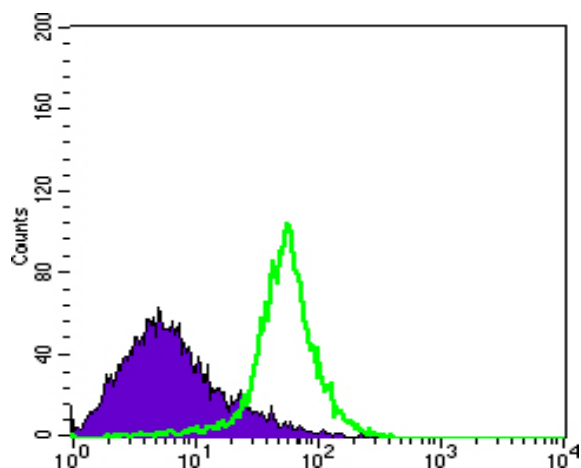
## Products Images



Western Blot analysis using Integrin  $\alpha 5$  Monoclonal Antibody against ITGA5-hlgGfc transfected HEK293 cell lysate.



Immunohistochemistry analysis of paraffin-embedded human Placenta tissues with AEC staining using Integrin  $\alpha 5$  Monoclonal Antibody.



Flow cytometric analysis of HeLa cells using Integrin  $\alpha 5$  Monoclonal Antibody (green) and negative control (purple).