

IL-6 Monoclonal Antibody

Catalog No :	YM0372
Reactivity :	Human
Applications :	WB;ELISA
Target :	IL6
Fields :	>>EGFR tyrosine kinase inhibitor resistance;>>Antifolate resistance;>>Cytokine-cytokine receptor interaction;>>Viral protein interaction with cytokine and cytokine receptor;>>HIF-1 signaling pathway;>>FoxO signaling pathway;>>PI3K-Akt signaling pathway;>>Cellular senescence;>>Toll-like receptor signaling pathway;>>NOD-like receptor signaling pathway;>>Cytosolic DNA-sensing pathway;>>C-type lectin receptor signaling pathway;>>JAK-STAT signaling pathway;>>Hematopoietic cell lineage;>>IL-17 signaling pathway;>>Th17 cell differentiation;>>TNF signaling pathway;>>Intestinal immune network for IgA production;>>Insulin resistance;>>Non-alcoholic fatty liver disease;>>AGE-RAGE signaling pathway in diabetic complications;>>Alcoholic liver disease;>>Alzheimer disease;>>Prion disease;>>Pathways of neurodegeneration - multiple diseases;>>Pathogenic Escherichia coli infection;>>Salmonella infection;>>Pertussis;>>Legionellosis;>>Yersinia infection;>>Chagas disease;>>African trypanosomiasis;>>Malaria
Gene Name :	IL6
Protein Name :	Interleukin-6
Human Gene Id :	3569
Human Swiss Prot No :	P05231
Mouse Swiss Prot No :	P08505
Immunogen :	Purified recombinant fragment of human IL-6 expressed in E. Coli.
Specificity :	IL-6 Monoclonal Antibody detects endogenous levels of IL-6 protein.
Formulation :	Liquid in PBS containing 50% glycerol, 0.5% BSA and 0.02% sodium azide.

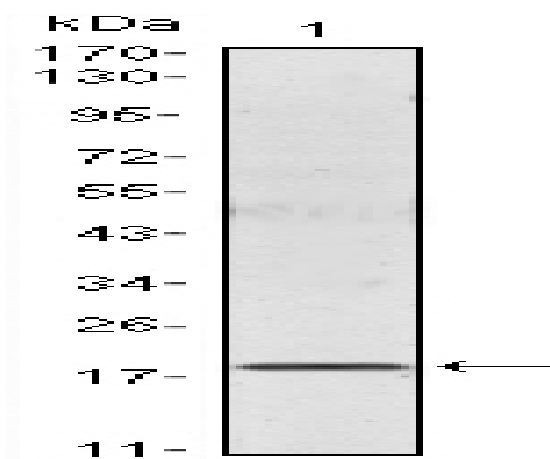
Source :	Monoclonal, Mouse
Dilution :	WB 1:500 - 1:2000. ELISA: 1:10000. Not yet tested in other applications.
Purification :	Affinity purification
Storage Stability :	-15°C to -25°C/1 year(Do not lower than -25°C)
Molecularweight :	24kD
Cell Pathway :	Cytokine-cytokine receptor interaction;Toll_Like;NOD-like receptor;Cytosolic DNA-sensing pathway;Jak_STAT;Hematopoietic cell lineage;Intestinal immune network for IgA production;Prion diseases;Pathway
P References :	1. Ota, N. et al. 2001. J. Hum. Genet. 46: 267-272.
Background :	This gene encodes a cytokine that functions in inflammation and the maturation of B cells. In addition, the encoded protein has been shown to be an endogenous pyrogen capable of inducing fever in people with autoimmune diseases or infections. The protein is primarily produced at sites of acute and chronic inflammation, where it is secreted into the serum and induces a transcriptional inflammatory response through interleukin 6 receptor, alpha. The functioning of this gene is implicated in a wide variety of inflammation-associated disease states, including susceptibility to diabetes mellitus and systemic juvenile rheumatoid arthritis. Alternative splicing results in multiple transcript variants. [provided by RefSeq, Dec 2015],
Function :	disease:At least 1 polymorphism in the IL6 gene renders HIV-infected men susceptible to Kaposi sarcoma [MIM:148000]. Kaposi sarcoma is a sarcoma of spindle cells mixed with angiomatous tissue. A relatively rare malignant skin tumor that results in multifocal purplish coloured papules or plaques that eventually form nodules. Most commonly seen in patients who suffer from AIDS.,disease:Genetic variations in IL6 are associated with susceptibility to systemic juvenile rheumatoid arthritis [MIM:604302]. Systemic juvenile rheumatoid arthritis is juvenile chronic arthritis associated with severe, debilitating, extraarticular features, and occasionally fatal complications. Despite medical treatment, many children still experience early joint destruction, necessitating surgical replacement.,function:IL-6 is a cytokine with a wide variety of biological functions: it plays an essential role in the
Subcellular Location :	Secreted .
Expression :	Produced by skeletal muscle.
Sort :	8524

No4 : 1

Host : Mouse

Modifications : Unmodified

Products Images



Western Blot analysis using IL-6 mouse mAb against IL-6 recombinant protein.