

## CD34 Monoclonal Antibody

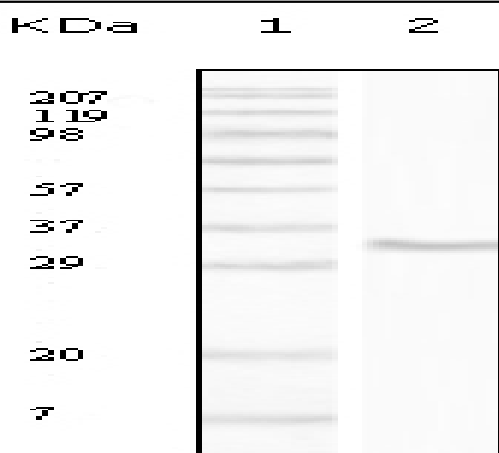
<b>Catalog No :</b>	YM0120
<b>Reactivity :</b>	Human
<b>Applications :</b>	WB;IHC;IF;ELISA
<b>Target :</b>	CD34
<b>Fields :</b>	>>Cell adhesion molecules;>>Hematopoietic cell lineage
<b>Gene Name :</b>	CD34
<b>Protein Name :</b>	Hematopoietic progenitor cell antigen CD34
<b>Human Gene Id :</b>	947
<b>Human Swiss Prot No :</b>	P28906
<b>Mouse Swiss Prot No :</b>	Q64314
<b>Immunogen :</b>	Purified recombinant fragment of CD34 expressed in E. Coli.
<b>Specificity :</b>	CD34 Monoclonal Antibody detects endogenous levels of CD34 protein.
<b>Formulation :</b>	Liquid in PBS containing 50% glycerol, 0.5% BSA and 0.02% sodium azide.
<b>Source :</b>	Monoclonal, Mouse
<b>Dilution :</b>	WB 1:500 - 1:2000. IHC 1:200 - 1:1000. IF 1:200 - 1:1000. ELISA: 1:10000. Not yet tested in other applications.
<b>Purification :</b>	Affinity purification
<b>Storage Stability :</b>	-15°C to -25°C/1 year(Do not lower than -25°C)
<b>Molecularweight :</b>	41kD

---

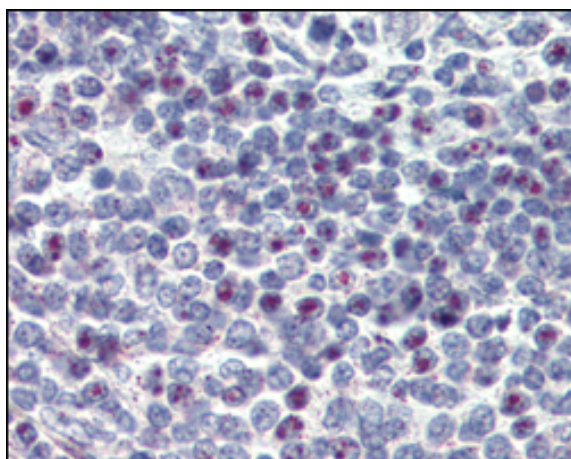
<b>Cell Pathway :</b>	Cell adhesion molecules (CAMs);Hematopoietic cell lineage;
<b>P References :</b>	<ol style="list-style-type: none"><li>1. Sho E., et al. Arterioscler Thromb Vasc Biol. 2004; 24: 1916-21.</li><li>2. Satterthwaite, A.B.,et al. Genomics.1992;12:788-794.</li><li>3. Krause, D.S.,et al. 1994. Blood.84: 691-701.</li></ol>
<b>Background :</b>	The protein encoded by this gene may play a role in the attachment of stem cells to the bone marrow extracellular matrix or to stromal cells. This single-pass membrane protein is highly glycosylated and phosphorylated by protein kinase C. Two transcript variants encoding different isoforms have been found for this gene. [provided by RefSeq, Aug 2011],
<b>Function :</b>	alternative products:Both isoforms are expressed on the cell surface. CD34-T/CD34-F ratio increases with cell differentiation,developmental stage:On early hematopoietic progenitor cells.,disease:Abnormal CD34 expression in leukemogenesis.,function:Possible adhesion molecule with a role in early hematopoiesis by mediating the attachment of stem cells to the bone marrow extracellular matrix or directly to stromal cells. Could act as a scaffold for the attachment of lineage specific glycans, allowing stem cells to bind to lectins expressed by stromal cells or other marrow components. Presents carbohydrate ligands to selectins.,online information:CD34 entry,PTM:Highly glycosylated.,PTM:Phosphorylated on serine residues by PKC.,similarity:Belongs to the CD34 family.,tissue specificity:Selectively expressed on hematopoietic progenitor cells and the small vessel endothelium of a variety of tiss
<b>Subcellular Location :</b>	Membrane; Single-pass type I membrane protein.
<b>Expression :</b>	Selectively expressed on hematopoietic progenitor cells and the small vessel endothelium of a variety of tissues.
<b>Sort :</b>	3558
<b>No4 :</b>	1
<b>Host :</b>	Mouse
<b>Modifications :</b>	Unmodified

---

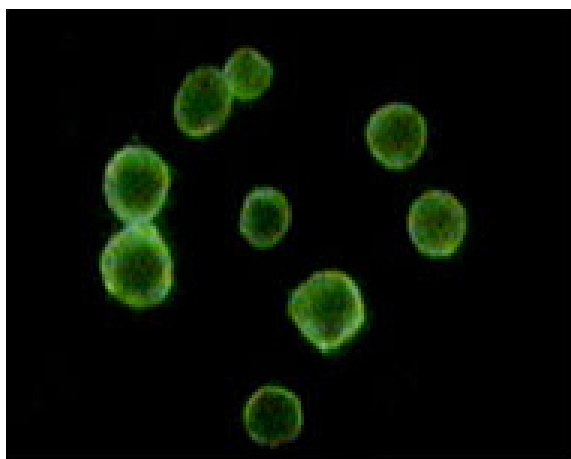
## Products Images



Western Blot analysis using CD34 Monoclonal Antibody against truncated CD34 recombinant protein.



Immunohistochemistry analysis of paraffin-embedded human spleen tissues with DAB staining using CD34 Monoclonal Antibody.



Immunofluorescence analysis of peripheral blood cells using CD34 Monoclonal Antibody.