

## C/EBP $\beta$ Monoclonal Antibody

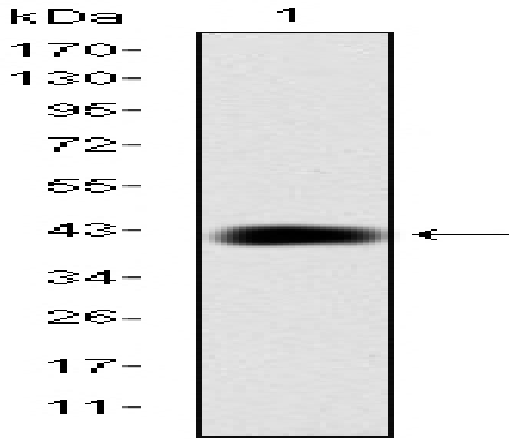
<b>Catalog No :</b>	YM0084
<b>Reactivity :</b>	Human
<b>Applications :</b>	WB;FCM;ELISA
<b>Target :</b>	C/EBP $\beta$
<b>Fields :</b>	>>IL-17 signaling pathway;>>TNF signaling pathway;>>Tuberculosis;>>Transcriptional misregulation in cancer
<b>Gene Name :</b>	CEBPB
<b>Protein Name :</b>	CCAAT/enhancer-binding protein beta
<b>Human Gene Id :</b>	1051
<b>Human Swiss Prot No :</b>	P17676
<b>Mouse Swiss Prot No :</b>	P28033
<b>Immunogen :</b>	Purified recombinant fragment of human C/EBP $\beta$ expressed in E. Coli.
<b>Specificity :</b>	C/EBP $\beta$ Monoclonal Antibody detects endogenous levels of C/EBP $\beta$ protein.
<b>Formulation :</b>	Liquid in PBS containing 50% glycerol, 0.5% BSA and 0.02% sodium azide.
<b>Source :</b>	Monoclonal, Mouse
<b>Dilution :</b>	WB 1:500 - 1:2000. Flow cytometry: 1:200 - 1:400. ELISA: 1:10000. Not yet tested in other applications.
<b>Purification :</b>	Affinity purification
<b>Storage Stability :</b>	-15°C to -25°C/1 year(Do not lower than -25°C)
<b>Molecularweight :</b>	36kD

---

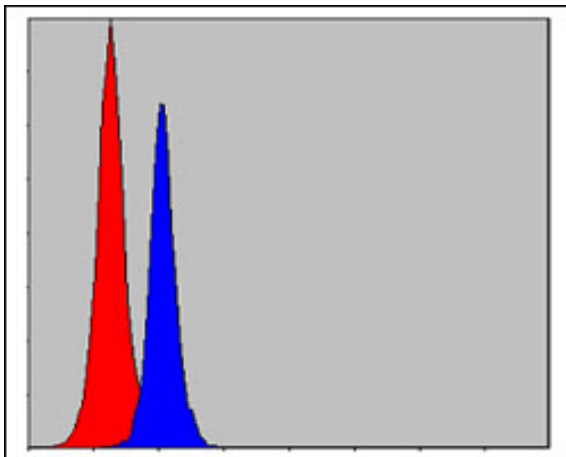
<b>Cell Pathway :</b>	Stem cell pathway; Protein_Acetylation
<b>P References :</b>	1. Biochem J. 2009 Dec 14;425(1):215-23. 2. Cell Signal. 2009 Dec;21(12):1918-24.
<b>Background :</b>	This intronless gene encodes a transcription factor that contains a basic leucine zipper (bZIP) domain. The encoded protein functions as a homodimer but can also form heterodimers with CCAAT/enhancer-binding proteins alpha, delta, and gamma. Activity of this protein is important in the regulation of genes involved in immune and inflammatory responses, among other processes. The use of alternative in-frame AUG start codons results in multiple protein isoforms, each with distinct biological functions. [provided by RefSeq, Oct 2013],
<b>Function :</b>	function:Important transcriptional activator in the regulation of genes involved in immune and inflammatory responses. Specifically binds to an IL-1 response element in the IL-6 gene. NF-IL6 also binds to regulatory regions of several acute-phase and cytokines genes. It probably plays a role in the regulation of acute-phase reaction, inflammation and hemopoiesis. The consensus recognition site is 5'-T[TG]NNGNAA[ TG]-3'.,PTM:Sumoylated by polymeric chains of SUMO2 or SUMO3.,similarity:Belongs to the bZIP family.,similarity:Belongs to the bZIP family. C/EBP subfamily.,similarity:Contains 1 bZIP domain.,subunit:Binds DNA as a dimer and can form stable heterodimers with C/EBP alpha, delta and gamma. Interacts with TRIM28 and PTGES2.,tissue specificity:Expressed at low levels in the lung, kidney and spleen.,
<b>Subcellular Location :</b>	Nucleus . Cytoplasm . Translocates to the nucleus when phosphorylated at Ser-288. In T-cells when sumoylated drawn to pericentric heterochromatin thereby allowing proliferation (By similarity). .
<b>Expression :</b>	Expressed at low levels in the lung, kidney and spleen.
<b>Tag :</b>	hot
<b>Sort :</b>	2916
<b>No4 :</b>	1
<b>Host :</b>	Mouse
<b>Modifications :</b>	Unmodified

---

Products Images



Western Blot analysis using C/EBP  $\beta$  Monoclonal Antibody against human C/EBP  $\beta$  (AA: 161-338) recombinant protein.



Flow cytometric analysis of MCF-7 cells using C/EBP  $\beta$  Monoclonal Antibody (blue) and negative control (red).

