

**Beclin-1 Monoclonal Antibody**

<b>Catalog No :</b>	YM0060
<b>Reactivity :</b>	Human
<b>Applications :</b>	WB;IHC;IF;FCM;ELISA
<b>Target :</b>	Beclin 1
<b>Fields :</b>	>>Autophagy - other;>>Mitophagy - animal;>>Autophagy - animal;>>Apoptosis - multiple species;>>Apelin signaling pathway;>>Alzheimer disease;>>Amyotrophic lateral sclerosis;>>Huntington disease;>>Spinocerebellar ataxia;>>Pathways of neurodegeneration - multiple diseases;>>Shigellosis;>>Kaposi sarcoma-associated herpesvirus infection
<b>Gene Name :</b>	BECN1
<b>Protein Name :</b>	Beclin-1
<b>Human Gene Id :</b>	8678
<b>Human Swiss Prot No :</b>	Q14457
<b>Mouse Swiss Prot No :</b>	O88597
<b>Immunogen :</b>	Purified recombinant fragment of human Beclin-1 expressed in E. Coli.
<b>Specificity :</b>	Beclin-1 Monoclonal Antibody detects endogenous levels of Beclin-1 protein.
<b>Formulation :</b>	Liquid in PBS containing 50% glycerol, 0.5% BSA and 0.02% sodium azide.
<b>Source :</b>	Monoclonal, Mouse
<b>Dilution :</b>	WB 1:500 - 1:2000. IHC 1:200 - 1:1000. Flow cytometry: 1:200 - 1:400. ELISA: 1:10000.. IF 1:50-200
<b>Purification :</b>	Affinity purification
<b>Storage Stability :</b>	-15°C to -25°C/1 year(Do not lower than -25°C)

**Molecularweight :** 52kD

---

**Cell Pathway :** Regulation of autophagy;

---

**P References :** 1. Autophagy. 2008 Oct 1;4(7):947-8.  
2. J Clin Invest. 2008 Jun;118(6):2190-9.

---

**Background :** beclin 1(BECL1) Homo sapiens This gene encodes a protein that regulates autophagy, a catabolic process of degradation induced by starvation. The encoded protein is a component of the phosphatidylinositol-3-kinase (PI3K) complex which mediates vesicle-trafficking processes. This protein is thought to play a role in multiple cellular processes, including tumorigenesis, neurodegeneration and apoptosis. Alternative splicing results in multiple transcript variants. [provided by RefSeq, Sep 2015],

---

**Function :** function:Plays a central role in autophagy (By similarity). May play a role in antiviral host defense. Protects against infection by a neurovirulent strain of Sindbis virus.,similarity:Belongs to the beclin family.,subcellular location:Expressed in dendrites and cell bodies of cerebellar Purkinje cells.,subunit:Interacts with GOPC and GRID2. Interacts with AMBRA1. Probably forms a complex with AMBRA1 and PIK3C3 (By similarity). Interacts with BCL2 and BCL2L1.,tissue specificity:Ubiquitous.,

---

**Subcellular Location :** Cytoplasm . Golgi apparatus, trans-Golgi network membrane ; Peripheral membrane protein . Endosome membrane ; Peripheral membrane protein . Endoplasmic reticulum membrane ; Peripheral membrane protein . Mitochondrion membrane ; Peripheral membrane protein . Endosome . Cytoplasmic vesicle, autophagosome . Interaction with ATG14 promotes translocation to autophagosomes. Expressed in dendrites and cell bodies of cerebellar Purkinje cells (By similarity). . ; [Beclin-1-C 35 kDa]: Mitochondrion . Nucleus . Cytoplasm . ; [Beclin-1-C 37 kDa]: Mitochondrion .

---

**Expression :** Ubiquitous.

---

**Tag :** orthogonal

---

**Sort :** 711

---

**No4 :** 1

---

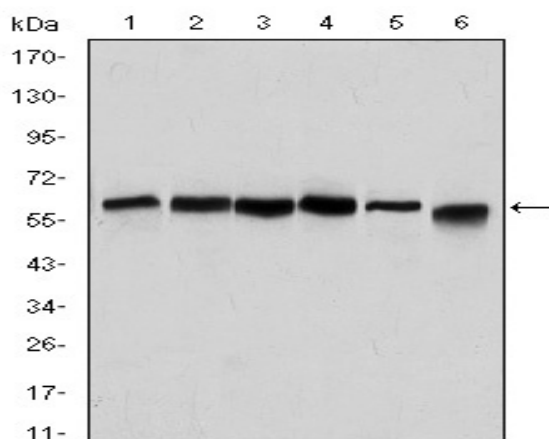
**Host :** Mouse

---

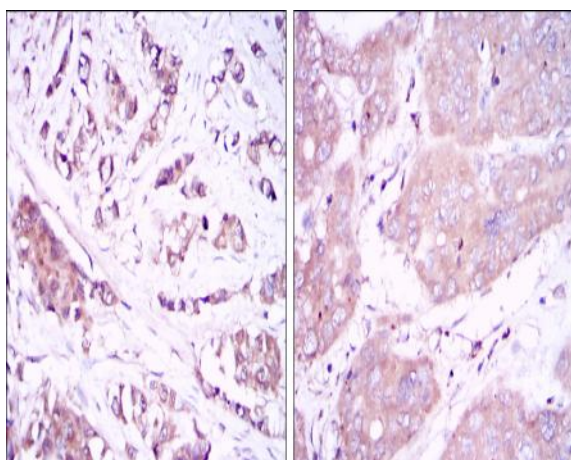
**Modifications :** Unmodified

---

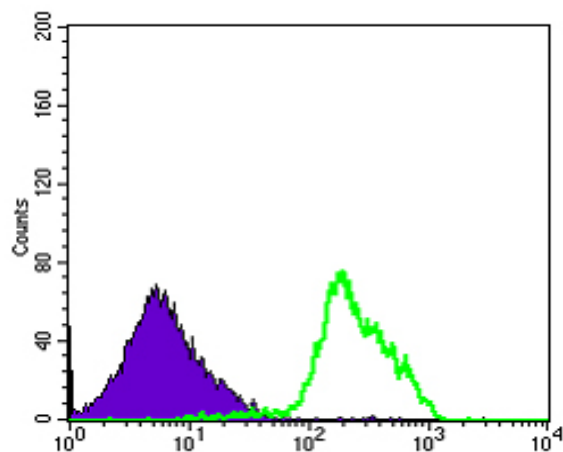
## Products Images



Western Blot analysis using Beclin-1 Monoclonal Antibody against HeLa (1), A431 (2), MCF-7 (3), RAJI (4), Jurkat (5) and SKBR-3 (6) cell lysate.



Immunohistochemistry analysis of paraffin-embedded breast cancer tissues (left) and liver cancer tissues (right) with DAB staining using Beclin-1 Monoclonal Antibody.



Flow cytometric analysis of RAJI cells using Beclin-1 Monoclonal Antibody (green) and negative control (purple).

