

**BDH1 Monoclonal Antibody**

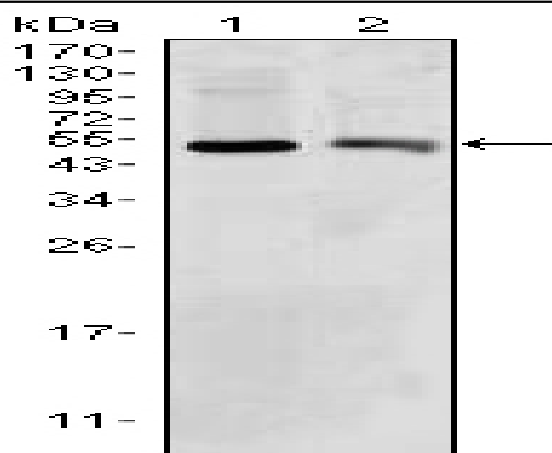
<b>Catalog No :</b>	YM0059
<b>Reactivity :</b>	Human;Mouse
<b>Applications :</b>	WB;IHC;IF;ELISA
<b>Target :</b>	BDH1
<b>Fields :</b>	>>Butanoate metabolism;>>Metabolic pathways
<b>Gene Name :</b>	BDH1
<b>Protein Name :</b>	D-beta-hydroxybutyrate dehydrogenase, mitochondrial
<b>Human Gene Id :</b>	622
<b>Human Swiss Prot No :</b>	Q02338
<b>Mouse Gene Id :</b>	71911
<b>Mouse Swiss Prot No :</b>	Q80XN0
<b>Immunogen :</b>	Purified recombinant fragment of human BDH1 expressed in E. Coli.
<b>Specificity :</b>	BDH1 Monoclonal Antibody detects endogenous levels of BDH1 protein.
<b>Formulation :</b>	Liquid in PBS containing 50% glycerol, 0.5% BSA and 0.02% sodium azide.
<b>Source :</b>	Monoclonal, Mouse
<b>Dilution :</b>	WB 1:500 - 1:2000. IHC 1:200 - 1:1000. ELISA: 1:10000.. IF 1:50-200
<b>Purification :</b>	Affinity purification
<b>Storage Stability :</b>	-15°C to -25°C/1 year(Do not lower than -25°C)
<b>Molecularweight :</b>	38kD

---

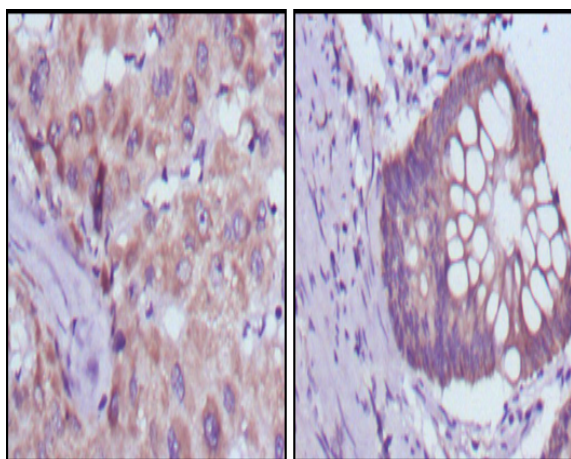
<b>Cell Pathway :</b>	Synthesis and degradation of ketone bodies;Butanoate metabolism;
<b>P References :</b>	<ol style="list-style-type: none"><li>1. Biochemistry. 1996 Jun 25;35(25):8158-65.</li><li>2. Biochemistry. 2000 Oct 3;39(39):11928-38.</li><li>3. Proc Natl Acad Sci U S A. 2001 Dec 18;98(26):15089-94.</li></ol>
<b>Background :</b>	This gene encodes a member of the short-chain dehydrogenase/reductase gene family. The encoded protein forms a homotetrameric lipid-requiring enzyme of the mitochondrial membrane and has a specific requirement for phosphatidylcholine for optimal enzymatic activity. The encoded protein catalyzes the interconversion of acetoacetate and (R)-3-hydroxybutyrate, the two major ketone bodies produced during fatty acid catabolism. Alternatively spliced transcript variants encoding the same protein have been described. [provided by RefSeq, Jul 2008],
<b>Function :</b>	catalytic activity:(R)-3-hydroxybutanoate + NAD(+) = acetoacetate + NADH.,enzyme regulation:Requires phosphatidylcholine as an allosteric activator for enzymatic activity.,similarity:Belongs to the short-chain dehydrogenases/reductases (SDR) family.,subunit:Homotetramer.,
<b>Subcellular Location :</b>	Mitochondrion inner membrane . Mitochondrion matrix .
<b>Expression :</b>	Heart,Lung,Ovary,
<b>Sort :</b>	2646
<b>No4 :</b>	1
<b>Host :</b>	Mouse
<b>Modifications :</b>	Unmodified

---

## Products Images



Western Blot analysis using BDH1 Monoclonal Antibody against HepG2 (1) and NIH/3T3 (2) cell lysate.



Immunohistochemistry analysis of paraffin-embedded human liver cancer (left) and colorectal cancer tissues (right) with DAB staining using BDH1 Monoclonal Antibody.