

ApoM Monoclonal Antibody

Catalog No :	YM0040
Reactivity :	Human
Applications :	WB;IF;ELISA
Target :	ApoM
Gene Name :	APOM
Protein Name :	Apolipoprotein M
Human Gene Id :	55937
Human Swiss Prot No :	O95445
Mouse Swiss Prot No :	Q9Z1R3
Immunogen :	Purified recombinant fragment of ApoM expressed in E. Coli.
Specificity :	ApoM Monoclonal Antibody detects endogenous levels of ApoM protein.
Formulation :	Liquid in PBS containing 50% glycerol, 0.5% BSA and 0.02% sodium azide.
Source :	Monoclonal, Mouse
Dilution :	WB 1:500 - 1:2000. IF 1:200 - 1:1000. ELISA: 1:10000. Not yet tested in other applications.
Purification :	Affinity purification
Concentration :	1 mg/ml
Storage Stability :	-15°C to -25°C/1 year(Do not lower than -25°C)
Molecularweight :	21kD

- P References :**
1. Xu,N. & Dahlback,B.1999. J. Biol. Chem. 274 (44):31286-31290.
 2. Christian Wolfrum, Matthew N Poy & Markus Stoffel. 2005. Nat Med. 11(4):418-22.
 3. Xu,N., Nilsson-Ehle,P. & Ahren,B. 2004. J
-

Background : The protein encoded by this gene is an apolipoprotein and member of the lipocalin protein family. It is found associated with high density lipoproteins and to a lesser extent with low density lipoproteins and triglyceride-rich lipoproteins. The encoded protein is secreted through the plasma membrane but remains membrane-bound, where it is involved in lipid transport. Alternate splicing results in both coding and non-coding variants of this gene. [provided by RefSeq, Jan 2012],

Function : function:Probably involved in lipid transport.,similarity:Belongs to the calycin superfamily. Lipocalin family. Highly divergent.,subcellular location:Present in high density lipoprotein (HDL) and to a lesser extent in triglyceride-rich lipoproteins (TGRLP) and low density lipoproteins (LDL).,tissue specificity:Plasma protein. Expressed in liver and kidney.,

Subcellular Location : Secreted . Present in high density lipoprotein (HDL) and to a lesser extent in triglyceride-rich lipoproteins (TGRLP) and low density lipoproteins (LDL).

Expression : Plasma protein. Expressed in liver and kidney.

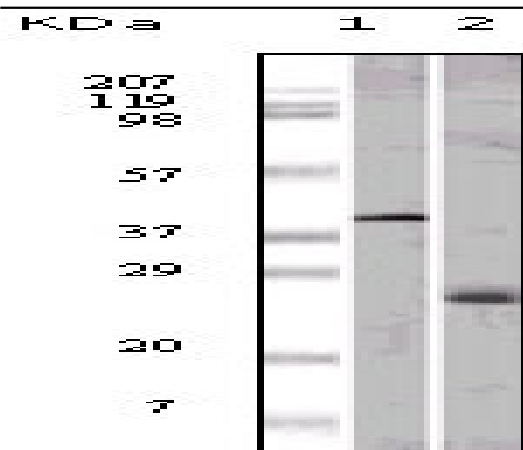
Sort : 2167

No4 : 1

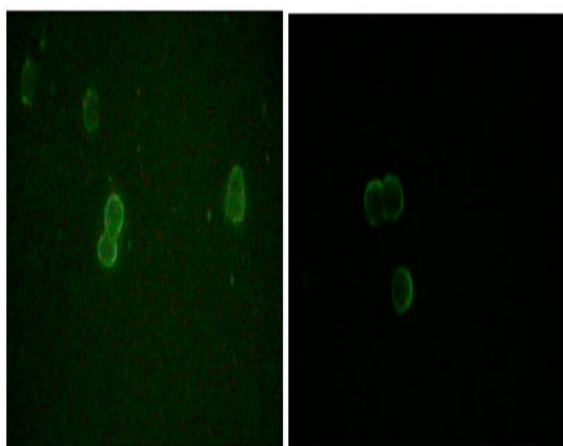
Host : Mouse

Modifications : Unmodified

Products Images



Western Blot analysis using ApoM Monoclonal Antibody against GST-ApoM recombinant protein (1) and human serum (2).



Immunofluorescence analysis of methanol-fixed L-02 (left) and Cos7 (right) cells using ApoM Monoclonal Antibody showing cytoplasmic and membrane localization.