

**ApoM Monoclonal Antibody**

<b>Catalog No :</b>	YM0039
<b>Reactivity :</b>	Human
<b>Applications :</b>	WB;IF;ELISA
<b>Target :</b>	ApoM
<b>Gene Name :</b>	APOM
<b>Protein Name :</b>	Apolipoprotein M
<b>Human Gene Id :</b>	55937
<b>Human Swiss Prot No :</b>	O95445
<b>Mouse Swiss Prot No :</b>	Q9Z1R3
<b>Immunogen :</b>	Purified recombinant fragment of human ApoM expressed in E. Coli.
<b>Specificity :</b>	ApoM Monoclonal Antibody detects endogenous levels of ApoM protein.
<b>Formulation :</b>	Liquid in PBS containing 50% glycerol, 0.5% BSA and 0.02% sodium azide.
<b>Source :</b>	Monoclonal, Mouse
<b>Dilution :</b>	WB 1:500 - 1:2000. IF 1:200 - 1:1000. ELISA: 1:10000. Not yet tested in other applications.
<b>Purification :</b>	Affinity purification
<b>Concentration :</b>	1 mg/ml
<b>Storage Stability :</b>	-15°C to -25°C/1 year(Do not lower than -25°C)
<b>Molecularweight :</b>	21kD

**P References :**

1. Xu, N. & Dahlback, B. 1999 J. Biol. Chem. 274:31286
  2. Duan J, Dahlback B, Villoutreix BO. FEBS Lett. 2001 Jun 15;499(1-2):127-32.
  3. Xu, N., Nilsson-Ehle, P. & Ahren, B. 2004. J. Nutr. Biochem.
- 

**Background :**

The protein encoded by this gene is an apolipoprotein and member of the lipocalin protein family. It is found associated with high density lipoproteins and to a lesser extent with low density lipoproteins and triglyceride-rich lipoproteins. The encoded protein is secreted through the plasma membrane but remains membrane-bound, where it is involved in lipid transport. Alternate splicing results in both coding and non-coding variants of this gene. [provided by RefSeq, Jan 2012],

---

**Function :**

function: Probably involved in lipid transport., similarity: Belongs to the calycin superfamily. Lipocalin family. Highly divergent., subcellular location: Present in high density lipoprotein (HDL) and to a lesser extent in triglyceride-rich lipoproteins (TGRLP) and low density lipoproteins (LDL)., tissue specificity: Plasma protein. Expressed in liver and kidney.,

---

**Subcellular Location :**

Secreted . Present in high density lipoprotein (HDL) and to a lesser extent in triglyceride-rich lipoproteins (TGRLP) and low density lipoproteins (LDL).

---

**Expression :**

Plasma protein. Expressed in liver and kidney.

---

**Sort :**

2168

---

**No4 :**

1

---

**Host :**

Mouse

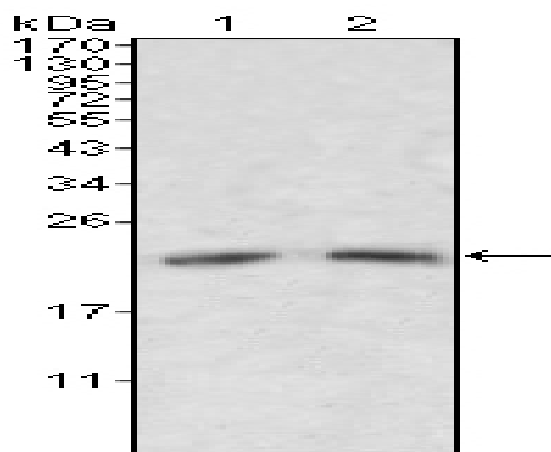
---

**Modifications :**

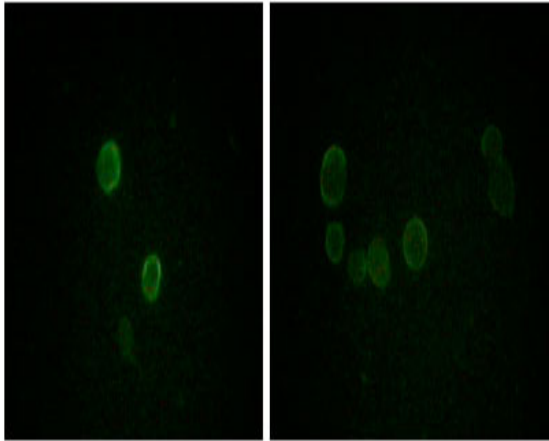
Unmodified

---

## Products Images



Western Blot analysis using ApoM Monoclonal Antibody against human serum (1, 2).



Immunofluorescence analysis of methanol-fixed L-02 (left) and Cos7 (right) cells using ApoM Monoclonal Antibody showing cytoplasmic and membrane localization.