

Fer Monoclonal Antibody

Catalog No :	YM0262
Reactivity :	Human;Mouse
Applications :	WB;IHC;IF;ELISA
Target :	FER
Fields :	>>Adherens junction
Gene Name :	FER
Protein Name :	Tyrosine-protein kinase Fer
Human Gene Id :	2241
Human Swiss Prot No :	P16591
Mouse Gene Id :	14158
Mouse Swiss Prot No :	P70451
Immunogen :	Purified recombinant fragment of human Fer expressed in E. Coli.
Specificity :	Fer Monoclonal Antibody detects endogenous levels of Fer protein.
Formulation :	Liquid in PBS containing 50% glycerol, 0.5% BSA and 0.02% sodium azide.
Source :	Monoclonal, Mouse
Dilution :	WB 1:500 - 1:2000. IHC 1:200 - 1:1000. IF 1:200 - 1:1000. ELISA: 1:10000. Not yet tested in other applications.
Purification :	Affinity purification
Storage Stability :	-15°C to -25°C/1 year(Do not lower than -25°C)

Molecularweight : 95kD

Cell Pathway : Adherens_Junction;

P References :

1. Li L. Cheng X. Ling HQ. Plant Mol Biol. 2004, Jan, 54(1):125-36.
2. Girault JA. Greengard P. Arch Neurol. 2004, May, 61(5):641-4.
3. Fan L. Di Ciano-Oliveira C. Weed SA. et al. Biochem J. 2

Background : The protein encoded by this gene is a member of the FPS/FES family of non-transmembrane receptor tyrosine kinases. It regulates cell-cell adhesion and mediates signaling from the cell surface to the cytoskeleton via growth factor receptors. Alternative splicing results in multiple transcript variants. A related pseudogene has been identified on chromosome X. [provided by RefSeq, Apr 2015],

Function : catalytic activity:ATP + a [protein]-L-tyrosine = ADP + a [protein]-L-tyrosine phosphate.,function:Tyrosine kinase of the non-receptor type. Probably performs an important function, perhaps in regulatory processes such as cell cycle control.,similarity:Belongs to the protein kinase superfamily. Tyr protein kinase family. Fes/fps subfamily.,similarity:Contains 1 FCH domain.,similarity:Contains 1 protein kinase domain.,similarity:Contains 1 SH2 domain.,subcellular location:Associated with the chromatin.,tissue specificity:Expressed in a variety of lymphoid cell lines.,

Subcellular Location : Cytoplasm. Cytoplasm, cytoskeleton. Cell membrane; Peripheral membrane protein; Cytoplasmic side. Cell projection. Cell junction. Membrane; Peripheral membrane protein; Cytoplasmic side. Nucleus. Cytoplasm, cell cortex. Associated with the chromatin. Detected on microtubules in polarized and motile vascular endothelial cells. Colocalizes with F-actin at the cell cortex. Colocalizes with PECAM1 and CTNND1 at nascent cell-cell contacts.

Expression : Isoform 1 is detected in normal colon and in fibroblasts (at protein level). Isoform 3 is detected in normal testis, in colon carcinoma-derived metastases in lung, liver and ovary, and in colon carcinoma and hepato carcinoma cell lines (at protein level). Isoform 3 is not detected in normal colon or in normal fibroblasts (at protein level). Widely expressed.

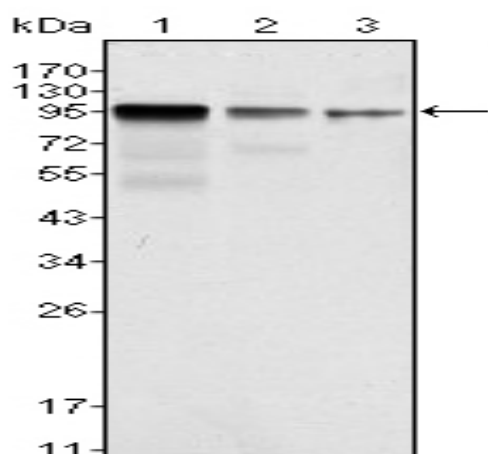
Sort : 5996

No4 : 1

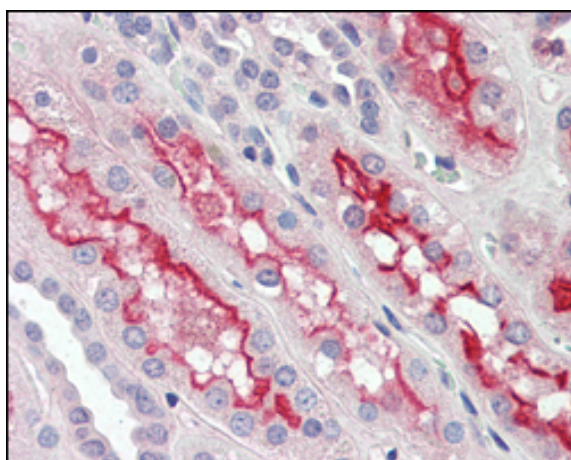
Host : Mouse

Modifications : Unmodified

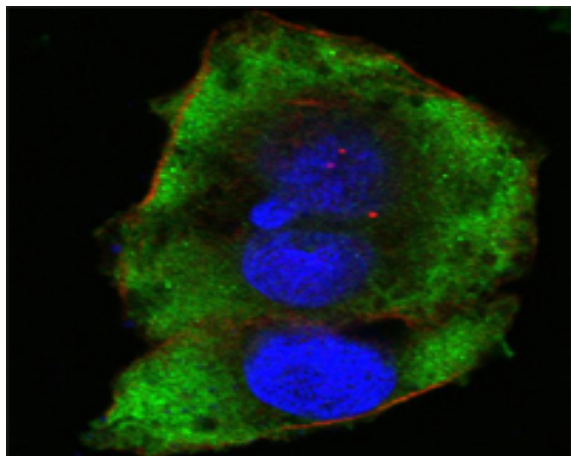
Products Images



Western Blot analysis using Fer Monoclonal Antibody against NIH/3T3 (1), A549 (2) and SK-MEL-5 (3) cell lysate.



Immunohistochemistry analysis of paraffin-embedded human kidney tissues with AEC staining using Fer Monoclonal Antibody.



Confocal immunofluorescence analysis of HeLa cells using Fer Monoclonal Antibody (green). Red: Actin filaments have been labeled with Alexa Fluor-555 phalloidin. Blue: DRAQ5 fluorescent DNA dye.