

ERM Monoclonal Antibody

Catalog No :	YM0247
Reactivity :	Human
Applications :	WB;ELISA
Target :	ERM
Fields :	>>Transcriptional misregulation in cancer;>>Prostate cancer
Gene Name :	ETV5
Protein Name :	ETS translocation variant 5
Human Gene Id :	2119
Human Swiss Prot No :	P41161
Mouse Swiss Prot No :	Q9CXC9
Immunogen :	Purified recombinant fragment of human ERM expressed in E. Coli.
Specificity :	ERM Monoclonal Antibody detects endogenous levels of ERM protein.
Formulation :	Liquid in PBS containing 50% glycerol, 0.5% BSA and 0.02% sodium azide.
Source :	Monoclonal, Mouse
Dilution :	WB 1:500 - 1:2000. ELISA: 1:10000. Not yet tested in other applications.
Purification :	Affinity purification
Storage Stability :	-15°C to -25°C/1 year(Do not lower than -25°C)
Molecularweight :	58kD
P References :	1. Immunity. 2002 Oct;17(4):401-12.

2. Clin Cancer Res. 2004 Nov 1;10(21):7297-303.

3. J Hum Genet. 2009 Dec;54(12):727-31.

Background :

function: Binds to DNA sequences containing the consensus nucleotide core sequence GGAA., mass spectrometry: PubMed:11840567, similarity: Belongs to the ETS family., similarity: Contains 1 ETS DNA-binding domain., tissue specificity: Ubiquitous.,

Function :

function: Binds to DNA sequences containing the consensus nucleotide core sequence GGAA., mass spectrometry: PubMed:11840567, similarity: Belongs to the ETS family., similarity: Contains 1 ETS DNA-binding domain., tissue specificity: Ubiquitous.,

Subcellular Location :

Nucleus.

Expression :

Ubiquitous.

Sort :

5737

No4 :

1

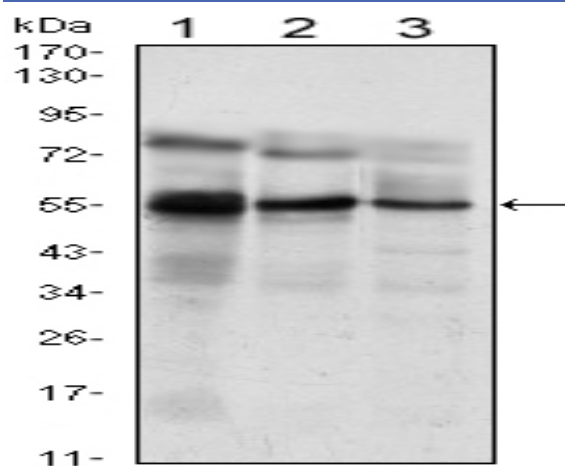
Host :

Mouse

Modifications :

Unmodified

Products Images



Western Blot analysis using ERM Monoclonal Antibody against Jurkat (1), NIH/3T3 (2) and MCF-7 (3) cell lysate.