

EphB1 Monoclonal Antibody

Catalog No :	YM0229
Reactivity :	Human
Applications :	WB;IHC;IF;ELISA
Target :	EphB1
Fields :	>>Axon guidance
Gene Name :	EPHB1
Protein Name :	Ephrin type-B receptor 1
Human Gene Id :	2047
Human Swiss Prot No :	P54762
Mouse Swiss Prot No :	Q8CBF3
Immunogen :	Purified recombinant fragment of EphB1 (aa19-133) expressed in E. Coli.
Specificity :	EphB1 Monoclonal Antibody detects endogenous levels of EphB1 protein.
Formulation :	Liquid in PBS containing 50% glycerol, 0.5% BSA and 0.02% sodium azide.
Source :	Monoclonal, Mouse
Dilution :	WB 1:500 - 1:2000. IHC 1:200 - 1:1000. ELISA: 1:10000.. IF 1:50-200
Purification :	Affinity purification
Storage Stability :	-15°C to -25°C/1 year(Do not lower than -25°C)
Molecularweight :	110kD
Cell Pathway :	Axon guidance;

P References :

1. J Cell Sci. 2002 Aug 1;115(Pt 15):3073-81.
2. Proc Natl Acad Sci U S A. 2002 Jul 9;99(14):9219-24.

Background :

Ephrin receptors and their ligands, the ephrins, mediate numerous developmental processes, particularly in the nervous system. Based on their structures and sequence relationships, ephrins are divided into the ephrin-A (EFNA) class, which are anchored to the membrane by a glycosylphosphatidylinositol linkage, and the ephrin-B (EFNB) class, which are transmembrane proteins. The Eph family of receptors are divided into 2 groups based on the similarity of their extracellular domain sequences and their affinities for binding ephrin-A and ephrin-B ligands. Ephrin receptors make up the largest subgroup of the receptor tyrosine kinase (RTK) family. The protein encoded by this gene is a receptor for ephrin-B family members. [provided by RefSeq, Jul 2008],

Function :

catalytic activity:ATP + a [protein]-L-tyrosine = ADP + a [protein]-L-tyrosine phosphate.,function:Receptor for members of the ephrin-B family. Binds to ephrin-B1, -B2 and -B3. May be involved in cell-cell interactions in the nervous system.,similarity:Belongs to the protein kinase superfamily. Tyr protein kinase family. Ephrin receptor subfamily.,similarity:Contains 1 protein kinase domain.,similarity:Contains 1 SAM (sterile alpha motif) domain.,similarity:Contains 2 fibronectin type-III domains.,subunit:The ligand-activated form interacts with GRB2, GRB10 and NCK through their respective SH2 domains. The GRB10 SH2 domain binds EPHB1 through Tyr-928, while GRB2 binds residues within the catalytic domain. Interacts with EPHB6. The NCK SH2 domain binds EPHB1 through Tyr-594. Interacts with PRKCABP.,tissue specificity:Preferentially expressed in brain.,

Subcellular Location :

Cell membrane ; Single-pass type I membrane protein . Early endosome membrane . Cell projection, dendrite .

Expression :

Preferentially expressed in brain.

Sort :

5640

No4 :

1

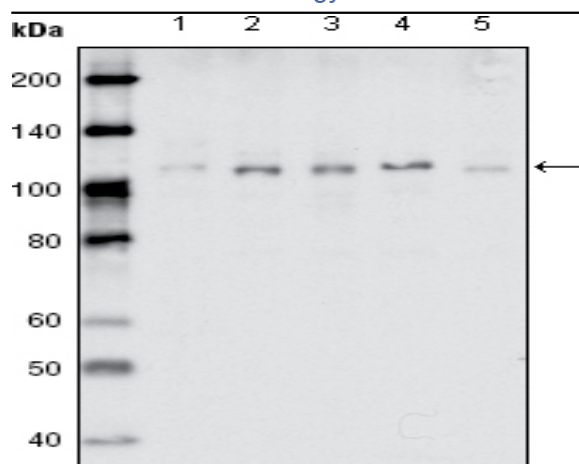
Host :

Mouse

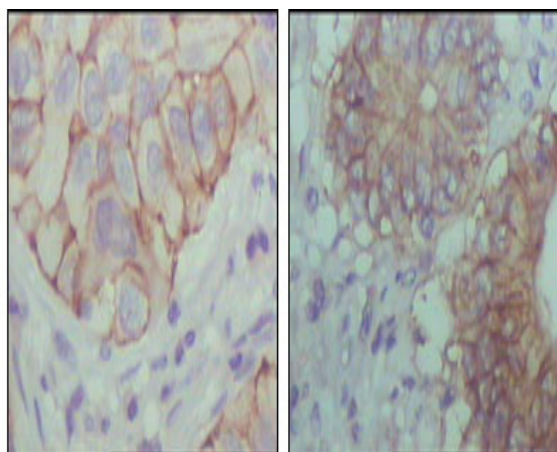
Modifications :

Unmodified

Products Images



Western Blot analysis using EphB1 Monoclonal Antibody against MDA-MB-468 (1), MDA-MB-453 (2), MCF-7 (3), T47D (4) and SKBR-3 (5) cell lysate.



Immunohistochemistry analysis of paraffin-embedded human lung cancer (left) and colon cancer (right) showing cytoplasmic localization with DAB staining using EphB1 Monoclonal Antibody.