

EphA8 Monoclonal Antibody

Catalog No :	YM0228
Reactivity :	Human
Applications :	WB;ELISA
Target :	EphA8
Fields :	>>Axon guidance
Gene Name :	EPHA8
Protein Name :	Ephrin type-A receptor 8
Human Gene Id :	2046
Human Swiss Prot No :	P29322
Mouse Swiss Prot No :	O09127
Immunogen :	Purified recombinant fragment of EphA8 (aa70-150) expressed in E. Coli.
Specificity :	EphA8 Monoclonal Antibody detects endogenous levels of EphA8 protein.
Formulation :	Liquid in PBS containing 50% glycerol, 0.5% BSA and 0.02% sodium azide.
Source :	Monoclonal, Mouse
Dilution :	WB 1:500 - 1:2000. ELISA: 1:10000. Not yet tested in other applications.
Purification :	Affinity purification
Storage Stability :	-15°C to -25°C/1 year(Do not lower than -25°C)
Molecularweight :	111kD
Cell Pathway :	Axon guidance;

P References :

1. Curr Opin Neurobiol. 2004 Jun;14(3):288-96.
 2. Oncogene. 2005 Jun 16;24(26):4243-56.
-

Background :

This gene encodes a member of the ephrin receptor subfamily of the protein-tyrosine kinase family. EPH and EPH-related receptors have been implicated in mediating developmental events, particularly in the nervous system. Receptors in the EPH subfamily typically have a single kinase domain and an extracellular region containing a Cys-rich domain and 2 fibronectin type III repeats. The ephrin receptors are divided into 2 groups based on the similarity of their extracellular domain sequences and their affinities for binding ephrin-A and ephrin-B ligands. The protein encoded by this gene functions as a receptor for ephrin A2, A3 and A5 and plays a role in short-range contact-mediated axonal guidance during development of the mammalian nervous system. [provided by RefSeq, Jul 2008],

Function :

catalytic activity:ATP + a [protein]-L-tyrosine = ADP + a [protein]-L-tyrosine phosphate.,function:Receptor for members of the ephrin-A family.,PTM:Phosphorylation on Tyr-616 is critical for association with FYN.,PTM:Phosphorylation on Tyr-839 modulates tyrosine kinase activity.,similarity:Belongs to the protein kinase superfamily. Tyr protein kinase family. Ephrin receptor subfamily.,similarity:Contains 1 protein kinase domain.,similarity:Contains 1 SAM (sterile alpha motif) domain.,similarity:Contains 2 fibronectin type-III domains.,subunit:Interacts with FYN (By similarity). Interacts with ANKS1B.,

Subcellular Location :

Cell membrane ; Single-pass type I membrane protein . Cell projection . Early endosome membrane . Undergoes clathrin-mediated endocytosis upon EFNA5-binding and is targeted to early endosomes. .

Expression :

Brain,Eye,

Sort :

5639

No4 :

1

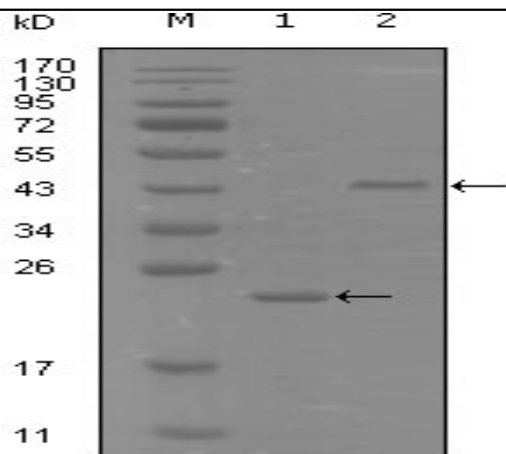
Host :

Mouse

Modifications :

Unmodified

Products Images



Western Blot analysis using EphA8 Monoclonal Antibody against truncated Trx-EphA8 recombinant protein (1) and truncated MBP-EphA8(aa70-150) recombinant protein (2).