

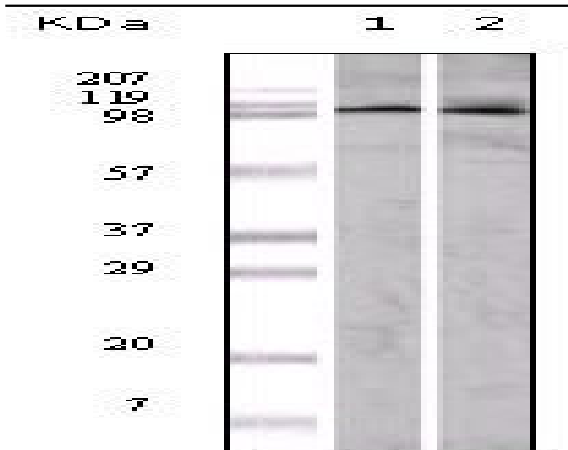
## EphA1 Monoclonal Antibody

<b>Catalog No :</b>	YM0220
<b>Reactivity :</b>	Human
<b>Applications :</b>	WB;IHC;IF;ELISA
<b>Target :</b>	EphA1
<b>Fields :</b>	>>Axon guidance
<b>Gene Name :</b>	EPHA1
<b>Protein Name :</b>	Ephrin type-A receptor 1
<b>Human Gene Id :</b>	2041
<b>Human Swiss Prot No :</b>	P21709
<b>Mouse Swiss Prot No :</b>	Q60750
<b>Immunogen :</b>	Purified recombinant fragment of EphA1 expressed in E. Coli.
<b>Specificity :</b>	EphA1 Monoclonal Antibody detects endogenous levels of EphA1 protein.
<b>Formulation :</b>	Liquid in PBS containing 50% glycerol, 0.5% BSA and 0.02% sodium azide.
<b>Source :</b>	Monoclonal, Mouse
<b>Dilution :</b>	WB 1:500 - 1:2000. IHC 1:200 - 1:1000. ELISA: 1:10000.. IF 1:50-200
<b>Purification :</b>	Affinity purification
<b>Concentration :</b>	1 mg/ml
<b>Storage Stability :</b>	-15°C to -25°C/1 year(Do not lower than -25°C)
<b>Molecularweight :</b>	108kD

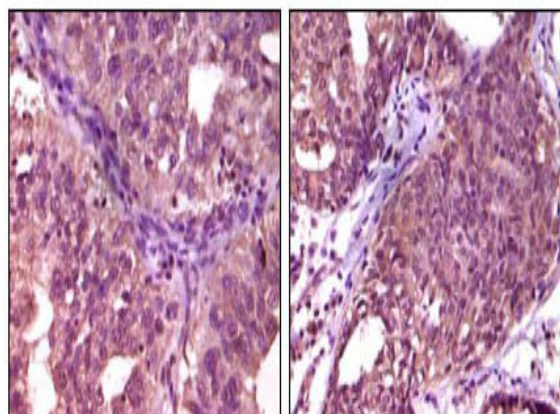
<b>Cell Pathway :</b>	Axon guidance;
<b>P References :</b>	<ol style="list-style-type: none"><li>1. Shannon L. Duffy, Kirsten A. Steiner, Patrick P.L. Tam Gene Expr Patterns. 2006 Feb 6.</li><li>2. Elena B. Pasquale. Nat Rev Mol Cell Biol.2005 Jun; 6(6): 462-75.</li></ol>
<b>Background :</b>	<p>This gene belongs to the ephrin receptor subfamily of the protein-tyrosine kinase family. EPH and EPH-related receptors have been implicated in mediating developmental events, particularly in the nervous system. Receptors in the EPH subfamily typically have a single kinase domain and an extracellular region containing a Cys-rich domain and 2 fibronectin type III repeats. The ephrin receptors are divided into 2 groups based on the similarity of their extracellular domain sequences and their affinities for binding ephrin-A and ephrin-B ligands. This gene is expressed in some human cancer cell lines and has been implicated in carcinogenesis. [provided by RefSeq, Jul 2008],</p>
<b>Function :</b>	<p>catalytic activity:ATP + a [protein]-L-tyrosine = ADP + a [protein]-L-tyrosine phosphate.,function:Receptor for members of the ephrin-A family. Binds with a low affinity to ephrin-A1 .,similarity:Belongs to the protein kinase superfamily. Tyr protein kinase family.,similarity:Belongs to the protein kinase superfamily. Tyr protein kinase family. Ephrin receptor subfamily.,similarity:Contains 1 protein kinase domain.,similarity:Contains 1 SAM (sterile alpha motif) domain.,similarity:Contains 2 fibronectin type-III domains.,tissue specificity:Overexpressed in several carcinomas.,</p>
<b>Subcellular Location :</b>	Cell membrane ; Single-pass type I membrane protein .
<b>Expression :</b>	Overexpressed in several carcinomas.
<b>Sort :</b>	5607
<b>No4 :</b>	1
<b>Host :</b>	Mouse
<b>Modifications :</b>	Unmodified

---

## Products Images



Western Blot analysis using EphA1 Monoclonal Antibody against A549 (1) and HeLa (2) cell lysate.



Immunohistochemistry analysis of paraffin-embedded human ovary carcinoma (left) and breast carcinoma (right), showing cytoplasmic localization with DAB staining using EphA1 Monoclonal Antibody.