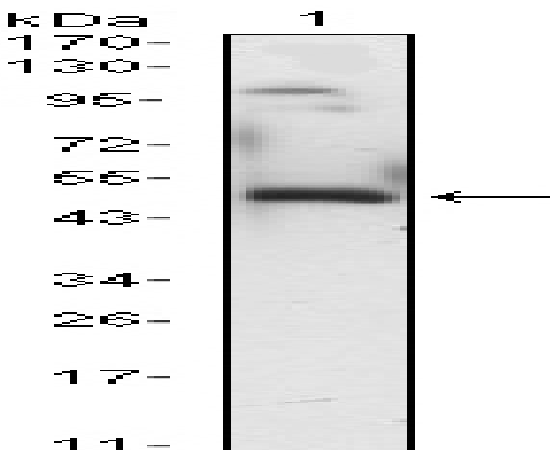


Egr-1 Monoclonal Antibody

Catalog No :	YM0212
Reactivity :	Human
Applications :	WB;ELISA
Target :	Egr-1
Fields :	>>Apelin signaling pathway;>>GnRH signaling pathway;>>Parathyroid hormone synthesis, secretion and action;>>AGE-RAGE signaling pathway in diabetic complications;>>Prion disease;>>Human T-cell leukemia virus 1 infection
Gene Name :	EGR1
Protein Name :	Early growth response protein 1
Human Gene Id :	1958
Human Swiss Prot No :	P18146
Mouse Swiss Prot No :	P08046
Immunogen :	Purified recombinant fragment of human Egr-1 (aa282-433) expressed in E. Coli.
Specificity :	Egr-1 Monoclonal Antibody detects endogenous levels of Egr-1 protein.
Formulation :	Liquid in PBS containing 50% glycerol, 0.5% BSA and 0.02% sodium azide.
Source :	Monoclonal, Mouse
Dilution :	WB 1:500 - 1:2000. ELISA: 1:10000. Not yet tested in other applications.
Purification :	Affinity purification
Storage Stability :	-15°C to -25°C/1 year(Do not lower than -25°C)
Molecularweight :	58kD

Cell Pathway :	Prion diseases;
P References :	<ol style="list-style-type: none"> 1. J Mol Biol. 2009 Nov 20;394(1):29-45. 2. Clin Chim Acta. 2010 Jan;411(1-2):67-71. 3. Gene. 2010 Jan 15;450(1-2):121-7.
Background :	The protein encoded by this gene belongs to the EGR family of C2H2-type zinc-finger proteins. It is a nuclear protein and functions as a transcriptional regulator. The products of target genes it activates are required for differentiation and mitogenesis. Studies suggest this is a cancer suppressor gene. [provided by RefSeq, Dec 2014],
Function :	function:Transcriptional regulator. Recognizes and binds to the DNA sequence 5'-CGCCCCCGC-3'(EGR-site). Activates the transcription of target genes whose products are required for mitogenesis and differentiation.,induction:By growth factors.,similarity:Belongs to the EGR C2H2-type zinc-finger protein family.,similarity:Contains 3 C2H2-type zinc fingers.,
Subcellular Location :	Nucleus . Cytoplasm .
Expression :	Detected in neutrophils (at protein level).
Sort :	5452
No4 :	1
Host :	Mouse
Modifications :	Unmodified

Products Images



Western Blot analysis using Egr-1 Monoclonal Antibody against EGR1-hlgGfc transfected HEK293 (1) cell lysate.