

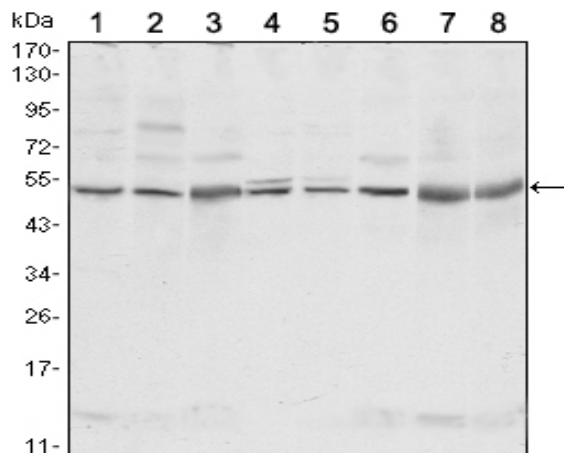
Csk Monoclonal Antibody

Catalog No :	YM0170
Reactivity :	Human;Mouse;Rat;Monkey
Applications :	WB;IF;FCM;ELISA
Target :	Csk
Fields :	>>Epithelial cell signaling in Helicobacter pylori infection
Gene Name :	CSK
Protein Name :	Tyrosine-protein kinase CSK
Human Gene Id :	1445
Human Swiss Prot No :	P41240
Mouse Gene Id :	12988
Mouse Swiss Prot No :	P41241
Rat Gene Id :	315707
Rat Swiss Prot No :	P32577
Immunogen :	Purified recombinant fragment of human Csk expressed in E. Coli.
Specificity :	Csk Monoclonal Antibody detects endogenous levels of Csk protein.
Formulation :	Liquid in PBS containing 50% glycerol, 0.5% BSA and 0.02% sodium azide.
Source :	Monoclonal, Mouse
Dilution :	WB 1:500 - 1:2000. IF 1:200 - 1:1000. Flow cytometry: 1:200 - 1:400. ELISA: 1:10000. Not yet tested in other applications.

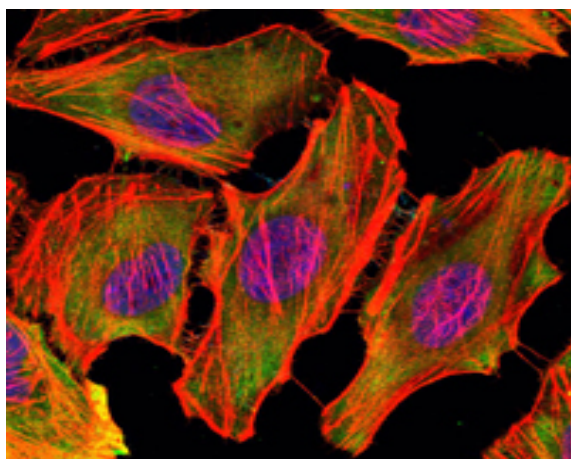
Purification :	Affinity purification
Storage Stability :	-15°C to -25°C/1 year(Do not lower than -25°C)
Molecularweight :	51kD
Cell Pathway :	Chemokine;Neurotrophin;Regulates Actin and Cytoskeleton;Epithelial cell signaling in Helicobacter pylori infection;
P References :	<ol style="list-style-type: none">1. Nat Genet. 2009 Jun;41(6):677-87.2. Leuk Res. 2009 Sep;33(9):e168-9.3. J Hypertens. 2011 Jan;29(1):62-9.
Background :	<p>catalytic activity:ATP + a [protein]-L-tyrosine = ADP + a [protein]-L-tyrosine phosphate.,function:Specifically phosphorylates 'Tyr-504' on LCK, which acts as a negative regulatory site. Can also act on the LYN and FYN kinases.,PTM:Autophosphorylation of Tyr-304 occurs only at abnormally high CSK concentrations in vitro.,similarity:Belongs to the protein kinase superfamily. Tyr protein kinase family.,similarity:Belongs to the protein kinase superfamily. Tyr protein kinase family. CSK subfamily.,similarity:Contains 1 protein kinase domain.,similarity:Contains 1 SH2 domain.,similarity:Contains 1 SH3 domain.,subcellular location:Mainly cytoplasmic, also present in lipid rafts.,subunit:Interacts with PTPN8 (By similarity). Interacts with phosphorylated SIT1, PAG1, LIME1 and TGFB111.,tissue specificity:Expressed in lung and macrophages.,</p>
Function :	<p>catalytic activity:ATP + a [protein]-L-tyrosine = ADP + a [protein]-L-tyrosine phosphate.,function:Specifically phosphorylates 'Tyr-504' on LCK, which acts as a negative regulatory site. Can also act on the LYN and FYN kinases.,PTM:Autophosphorylation of Tyr-304 occurs only at abnormally high CSK concentrations in vitro.,similarity:Belongs to the protein kinase superfamily. Tyr protein kinase family.,similarity:Belongs to the protein kinase superfamily. Tyr protein kinase family. CSK subfamily.,similarity:Contains 1 protein kinase domain.,similarity:Contains 1 SH2 domain.,similarity:Contains 1 SH3 domain.,subcellular location:Mainly cytoplasmic, also present in lipid rafts.,subunit:Interacts with PTPN8 (By similarity). Interacts with phosphorylated SIT1, PAG1, LIME1 and TGFB111.,tissue specificity:Expressed in lung and macrophages.,</p>
Subcellular Location :	Cytoplasm . Cell membrane . Mainly cytoplasmic, also present in lipid rafts. .
Expression :	Expressed in lung and macrophages.
Sort :	4615
No4 :	1

Host : Mouse**Modifications :** Unmodified

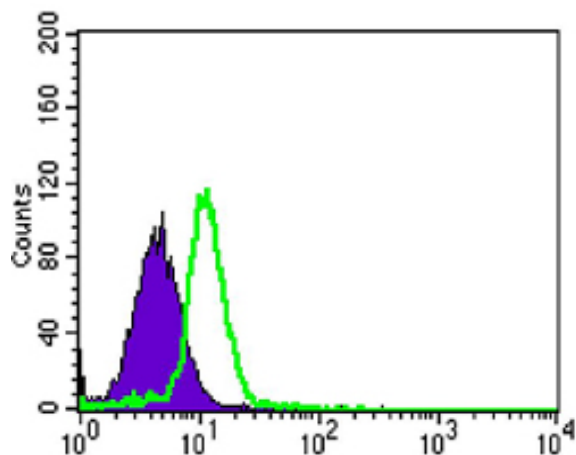
Products Images



Western Blot analysis using Csk Monoclonal Antibody against NIH/3T3 (1), HeLa (2), COS7 (3), Jurkat (4), Raw246.7 (5), A549 (6), HL-60 (7) and PC-12 (8) cell lysate.



Immunofluorescence analysis of U251 cells using Csk Monoclonal Antibody (green). Blue: DRAQ5 fluorescent DNA dye. Red: Actin filaments have been labeled with Alexa Fluor-555 phalloidin



Flow cytometric analysis of HL-60 cells using Csk Monoclonal Antibody (green) and negative control (purple).