

## Crk-L Monoclonal Antibody

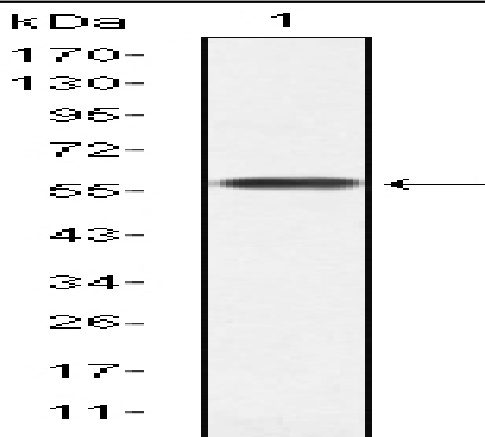
<b>Catalog No :</b>	YM0168
<b>Reactivity :</b>	Human
<b>Applications :</b>	WB;FCM;ELISA
<b>Target :</b>	Crk-L
<b>Fields :</b>	>>MAPK signaling pathway;>>ErbB signaling pathway;>>Rap1 signaling pathway;>>Chemokine signaling pathway;>>Focal adhesion;>>Fc gamma R-mediated phagocytosis;>>Neurotrophin signaling pathway;>>Regulation of actin cytoskeleton;>>Insulin signaling pathway;>>Growth hormone synthesis, secretion and action;>>Bacterial invasion of epithelial cells;>>Shigellosis;>>Yersinia infection;>>Human cytomegalovirus infection;>>Human immunodeficiency virus 1 infection;>>Pathways in cancer;>>MicroRNAs in cancer;>>Renal cell carcinoma;>>Chronic myeloid leukemia
<b>Gene Name :</b>	CRKL
<b>Protein Name :</b>	Crk-like protein
<b>Human Gene Id :</b>	1399
<b>Human Swiss Prot No :</b>	P46109
<b>Mouse Swiss Prot No :</b>	P47941
<b>Immunogen :</b>	Purified recombinant fragment of human Crk-L expressed in E. Coli.
<b>Specificity :</b>	Crk-L Monoclonal Antibody detects endogenous levels of Crk-L protein.
<b>Formulation :</b>	Liquid in PBS containing 50% glycerol, 0.5% BSA and 0.02% sodium azide.
<b>Source :</b>	Monoclonal, Mouse
<b>Dilution :</b>	WB 1:500 - 1:2000. Flow cytometry: 1:200 - 1:400. ELISA: 1:10000. Not yet tested in other applications.  Affinity purification

---

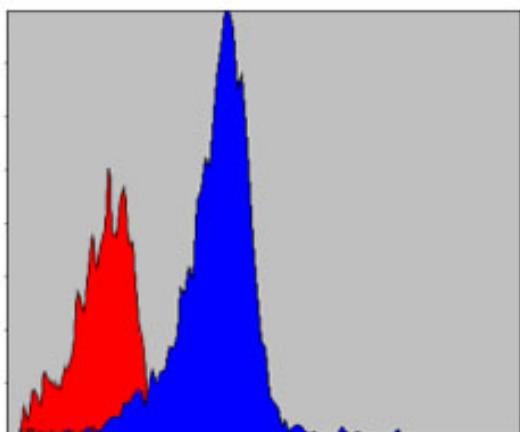
<b>Storage Stability :</b>	-15°C to -25°C/1 year(Do not lower than -25°C)
<b>Molecularweight :</b>	34kD
<b>Cell Pathway :</b>	MAPK_ERK_Growth;MAPK_G_Protein;ErbB_HER;Chemokine;Focal adhesion;Fc gamma R-mediated phagocytosis;Neurotrophin;Regulates Actin and Cytoskeleton;Insulin_Receptor;Pathways in cancer;Renal cell carcinoma
<b>P References :</b>	1. Mol Cell Biol. 2009 Jun;29(11):3076-87. 2. Cell. 2009 Jul 23;138(2):389-403.
<b>Background :</b>	This gene encodes a protein kinase containing SH2 and SH3 (src homology) domains which has been shown to activate the RAS and JUN kinase signaling pathways and transform fibroblasts in a RAS-dependent fashion. It is a substrate of the BCR-ABL tyrosine kinase, plays a role in fibroblast transformation by BCR-ABL, and may be oncogenic.[provided by RefSeq, Jan 2009],
<b>Function :</b>	function:May mediate the transduction of intracellular signals.,similarity:Contains 1 SH2 domain.,similarity:Contains 2 SH3 domains.,subunit:Interacts with INPP5D/SHIP1. Interacts with DOCK2 and EPOR. Interacts with phosphorylated CBLB and IRS4.,
<b>Subcellular Location :</b>	endosome,cytosol,cell-cell adherens junction,extracellular exosome,
<b>Expression :</b>	Skin,Spleen,
<b>Sort :</b>	4577
<b>No4 :</b>	1
<b>Host :</b>	Mouse
<b>Modifications :</b>	Unmodified

---

## Products Images



Western Blot analysis using Crk-L Monoclonal Antibody against human Crk-L (AA: 100-303) recombinant protein.



Flow cytometric analysis of NIH/3T3 cells using Crk-L Monoclonal Antibody (blue) and negative control (red).

