

## Cerberus Monoclonal Antibody

<b>Catalog No :</b>	YM0149
<b>Reactivity :</b>	Human
<b>Applications :</b>	WB;IHC;IF;ELISA
<b>Target :</b>	Cerberus
<b>Fields :</b>	>>Wnt signaling pathway
<b>Gene Name :</b>	CER1
<b>Protein Name :</b>	Cerberus
<b>Human Gene Id :</b>	9350
<b>Human Swiss Prot No :</b>	O95813
<b>Mouse Swiss Prot No :</b>	O55233
<b>Immunogen :</b>	Purified recombinant fragment of human Cerberus expressed in E. Coli.
<b>Specificity :</b>	Cerberus Monoclonal Antibody detects endogenous levels of Cerberus protein.
<b>Formulation :</b>	Liquid in PBS containing 50% glycerol, 0.5% BSA and 0.02% sodium azide.
<b>Source :</b>	Monoclonal, Mouse
<b>Dilution :</b>	WB 1:500 - 1:2000. IHC 1:200 - 1:1000. ELISA: 1:10000.. IF 1:50-200
<b>Purification :</b>	Affinity purification
<b>Storage Stability :</b>	-15°C to -25°C/1 year(Do not lower than -25°C)
<b>Molecularweight :</b>	30kD
<b>Cell Pathway :</b>	WNT;WNT-T CELL

**P References :**

1. Dev Biol. 1998 Feb 15;194(2):135-51.
2. Growth Factors. 2004 Dec;22(4):233-41.
3. PLoS One. 2009;4(4):e5302.

**Background :**

This gene encodes a cytokine member of the cysteine knot superfamily, characterized by nine conserved cysteines and a cysteine knot region. The cerberus-related cytokines, together with Dan and DRM/Gremlin, represent a group of bone morphogenetic protein (BMP) antagonists that can bind directly to BMPs and inhibit their activity. [provided by RefSeq, Jul 2008],

**Function :**

function:Cytokine that may play a role in anterior neural induction and somite formation during embryogenesis in part through a BMP-inhibitory mechanism. Can regulate Nodal signaling during gastrulation as well as the formation and patterning of the primitive streak.,PTM:N-glycosylated.,sequence caution:Translated as Ser.,similarity:Belongs to the DAN family.,similarity:Contains 1 CTCK (C-terminal cystine knot-like) domain.,subunit:Forms monomers and predominantly dimers.,

**Subcellular Location :**

Secreted .

**Expression :**

Blood,PCR rescued clones,

**Sort :**

3862

**No4 :**

1

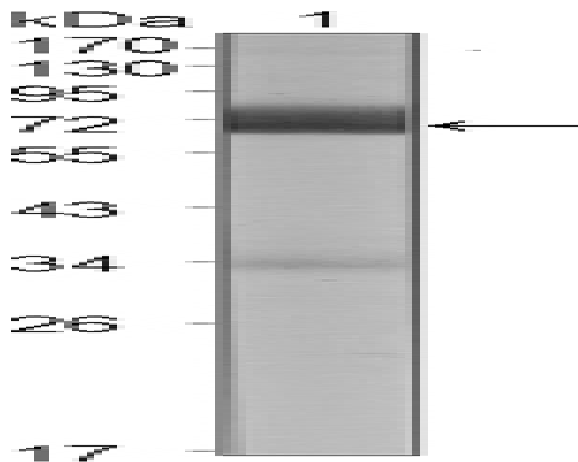
**Host :**

Mouse

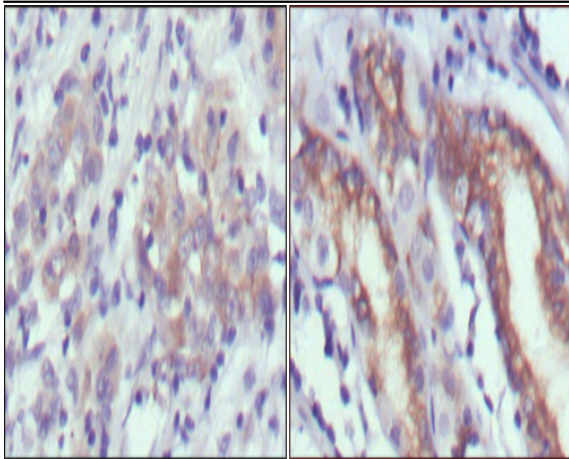
**Modifications :**

Unmodified

## Products Images



Western Blot analysis using Cerberus Monoclonal Antibody against CER1 (aa18-267)-hIgGfc transfected HEK293 cell lysate (1).



Immunohistochemistry analysis of paraffin-embedded human gastric cancer (left) and normal gastric tissues (right) with DAB staining using Cerberus Monoclonal Antibody.