

CD33 Monoclonal Antibody

Catalog No :	YM0119
Reactivity :	Human
Applications :	WB;ELISA
Target :	CD33
Fields :	>>Hematopoietic cell lineage
Gene Name :	CD33
Protein Name :	Myeloid cell surface antigen CD33
Human Gene Id :	945
Human Swiss Prot No :	P20138
Mouse Swiss Prot No :	Q63994
Immunogen :	Purified recombinant fragment of CD33 (48-258) expressed in E. Coli.
Specificity :	CD33 Monoclonal Antibody detects endogenous levels of CD33 protein.
Formulation :	Liquid in PBS containing 50% glycerol, 0.5% BSA and 0.02% sodium azide.
Source :	Monoclonal, Mouse
Dilution :	WB 1:500 - 1:2000. ELISA: 1:10000. Not yet tested in other applications.
Purification :	Affinity purification
Storage Stability :	-15°C to -25°C/1 year(Do not lower than -25°C)
Molecularweight :	40kD
Cell Pathway :	Hematopoietic cell lineage;

P References : 1. Exp Hematol. 2005 Feb;33(2):199-211.
2. Cancer. 2008 Feb 1;112(3):572-80.

Background : domain:Contains 2 copies of a cytoplasmic motif that is referred to as the immunoreceptor tyrosine-based inhibitor motif (ITIM). This motif is involved in modulation of cellular responses. The phosphorylated ITIM motif can bind the SH2 domain of several SH2-containing phosphatases.,function:Putative adhesion molecule of myelomonocytic-derived cells that mediates sialic-acid dependent binding to cells. Preferentially binds to alpha-2,6-linked sialic acid. The sialic acid recognition site may be masked by cis interactions with sialic acids on the same cell surface. In the immune response, may act as an inhibitory receptor upon ligand induced tyrosine phosphorylation by recruiting cytoplasmic phosphatase(s) via their SH2 domain(s) that block signal transduction through dephosphorylation of signaling molecules. Induces apoptosis in acute myeloid leukemia (in vitro).,online information:Siglec-3,PTM:Phosphorylation of Tyr-340 is involved in binding to PTPN6 and PTPN11. Phosphorylation of Tyr-358 is involved in binding to PTPN6.,similarity:Belongs to the immunoglobulin superfamily. SIGLEC (sialic acid binding Ig-like lectin) family.,similarity:Contains 1 Ig-like C2-type (immunoglobulin-like) domain.,similarity:Contains 1 Ig-like V-type (immunoglobulin-like) domain.,subunit:Interacts with PTPN6/SHP-1 and PTPN11/SHP-2 upon phosphorylation.,tissue specificity:Monocytic/myeloid lineage cells.,

Function : domain:Contains 2 copies of a cytoplasmic motif that is referred to as the immunoreceptor tyrosine-based inhibitor motif (ITIM). This motif is involved in modulation of cellular responses. The phosphorylated ITIM motif can bind the SH2 domain of several SH2-containing phosphatases.,function:Putative adhesion molecule of myelomonocytic-derived cells that mediates sialic-acid dependent binding to cells. Preferentially binds to alpha-2,6-linked sialic acid. The sialic acid recognition site may be masked by cis interactions with sialic acids on the same cell surface. In the immune response, may act as an inhibitory receptor upon ligand induced tyrosine phosphorylation by recruiting cytoplasmic phosphatase(s) via their SH2 domain(s) that block signal transduction through dephosphorylation of signaling molecules. Induces apoptosis in acute myeloid leukemia (in vitro).,online information:Siglec

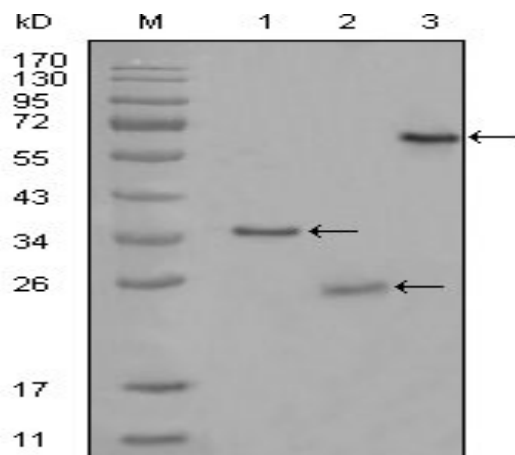
Subcellular Location : [Isoform CD33M]: Cell membrane ; Single-pass type I membrane protein.; [Isoform CD33m]: Peroxisome . CD33m isoform does not localize to cell surfaces but instead accumulates in peroxisomes. .

Expression : Monocytic/myeloid lineage cells. In the brain, CD33 is mainly expressed on microglial cells.

Sort : 3552

No4 : 1

Host : Mouse

Modifications : Unmodified**Products Images**

Western Blot analysis using CD33 Monoclonal Antibody against truncated Trx-CD33 recombinant protein (1), truncated CD33 (aa48-258)-His recombinant protein (2) and truncated CD33 (aa18-259)-hlgGFc transfected CHO-K1 cell lysate (3).