

CD31 Monoclonal Antibody

Catalog No :	YM0118
Reactivity :	Human;Rabbit
Applications :	WB;IHC;IF;ELISA
Target :	CD31
Fields :	>>Cell adhesion molecules;>>Leukocyte transendothelial migration;>>Malaria;>>Fluid shear stress and atherosclerosis
Gene Name :	PDGFRA
Protein Name :	Alpha-type platelet-derived growth factor receptor
Human Gene Id :	5175
Human Swiss Prot No :	P16284
Mouse Swiss Prot No :	Q08481
Immunogen :	Purified recombinant fragment of human CD31 expressed in E. Coli.
Specificity :	CD31 Monoclonal Antibody detects endogenous levels of CD31 protein.
Formulation :	Liquid in PBS containing 50% glycerol, 0.5% BSA and 0.02% sodium azide.
Source :	Monoclonal, Mouse
Dilution :	WB 1:500 - 1:2000. IHC 1:200 - 1:1000. IF 1:200 - 1:1000. ELISA: 1:10000. Not yet tested in other applications.
Purification :	Affinity purification
Storage Stability :	-15°C to -25°C/1 year(Do not lower than -25°C)
Molecularweight :	83kD

Cell Pathway : Cell adhesion molecules (CAMs);Leukocyte transendothelial migration;

P References :

1. Mayr U et al. Circ Res 98:412-20 (2006).
2. Bingle L et al. Br J Cancer 94:101-7 (2006).
3. Wynne F et al. Reproduction 131:721-32 (2006).

Background : The protein encoded by this gene is found on the surface of platelets, monocytes, neutrophils, and some types of T-cells, and makes up a large portion of endothelial cell intercellular junctions. The encoded protein is a member of the immunoglobulin superfamily and is likely involved in leukocyte migration, angiogenesis, and integrin activation. [provided by RefSeq, May 2010],

Function : function:This protein is a cell adhesion molecule expressed on platelets and at endothelial cell intercellular junctions.,online information:CD31 entry,online information:PECAM-1,online information:The Singapore human mutation and polymorphism database,PTM:Phosphorylated on Ser and Tyr residues after cellular activation.,similarity:Contains 6 Ig-like C2-type (immunoglobulin-like) domains.,tissue specificity:Long isoform predominates all tissues examined, isoform Delta12 was detected only in trachea and isoform Delta14-15 only in lung, isoform Delta14 was detected in all tissues examined with the strongest expression in heart.,

Subcellular Location : Cell membrane ; Single-pass type I membrane protein . Cell surface expression on neutrophils is down-regulated upon fMLP or CXCL8/IL8-mediated stimulation. .; [Isoform Long]: Cell membrane ; Single-pass type I membrane protein . Membrane raft . Cell junction . Localizes to the lateral border recycling compartment (LBRC) and recycles from the LBRC to the junction in resting endothelial cells. .; [Isoform Delta15]: Cell junction . Localizes to the lateral border recycling compartment (LBRC) and recycles from the LBRC to the junction in resting endothelial cells.

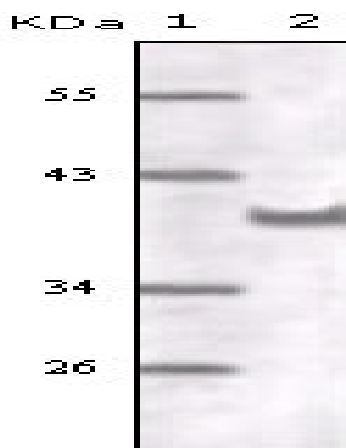
Expression : Expressed on platelets and leukocytes and is primarily concentrated at the borders between endothelial cells (PubMed:18388311, PubMed:21464369). Expressed in human umbilical vein endothelial cells (HUVECs) (at protein level) (PubMed:19342684, PubMed:17580308). Expressed on neutrophils (at protein level) (PubMed:17580308). Isoform Long predominates in all tissues examined (PubMed:12433657). Isoform Delta12 is detected only in trachea (PubMed:12433657). Isoform Delta14-15 is only detected in lung (PubMed:12433657). Isoform Delta14 is detected in all tissues examined with the strongest expression in heart (PubMed:12433657). Isoform Delta15 is expressed in brain, testis, ovary, cell surface of platelets, human umbilical vein endothelial cells (HUVECs), Jurkat T-cell leukemia, human erythrocyte

Tag : orthogonal

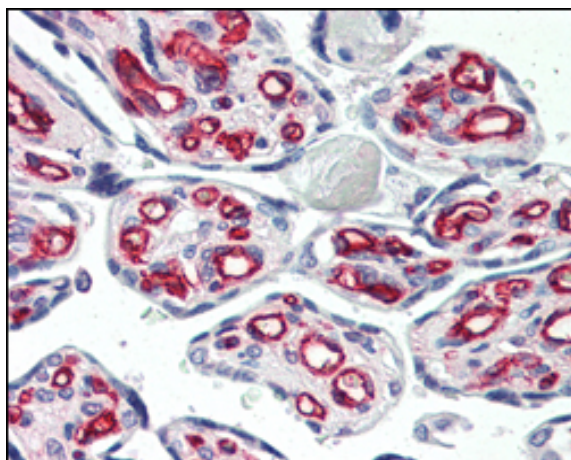
Sort : 3534

No4 :	<u>1</u>
Host :	<u>Mouse</u>
Modifications :	<u>Unmodified</u>

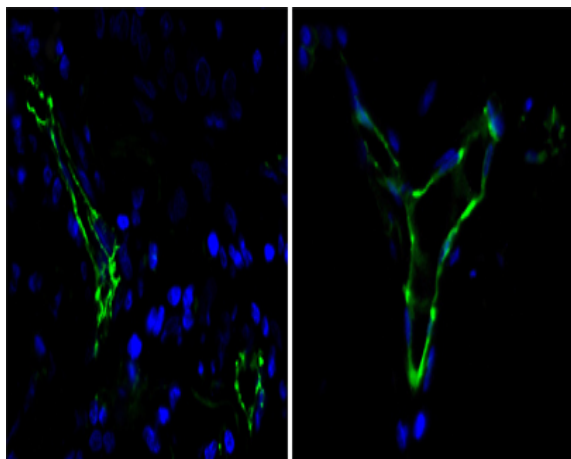
Products Images



Western Blot analysis using CD31 Monoclonal Antibody against truncated CD31 recombinant protein.



Immunohistochemistry analysis of paraffin-embedded human placenta tissues with AEC staining using CD31 Monoclonal Antibody.



Immunofluorescence analysis of paraffin-embedded human lung cancer(left) and breast cancer(right) cells using CD31 Monoclonal Antibody (green). Blue: DRAQ5 fluorescent DNA dye.